

# 全地面起重机 / All Terrain Crane



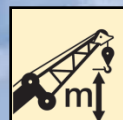
## QAY180



180t



62m



86m



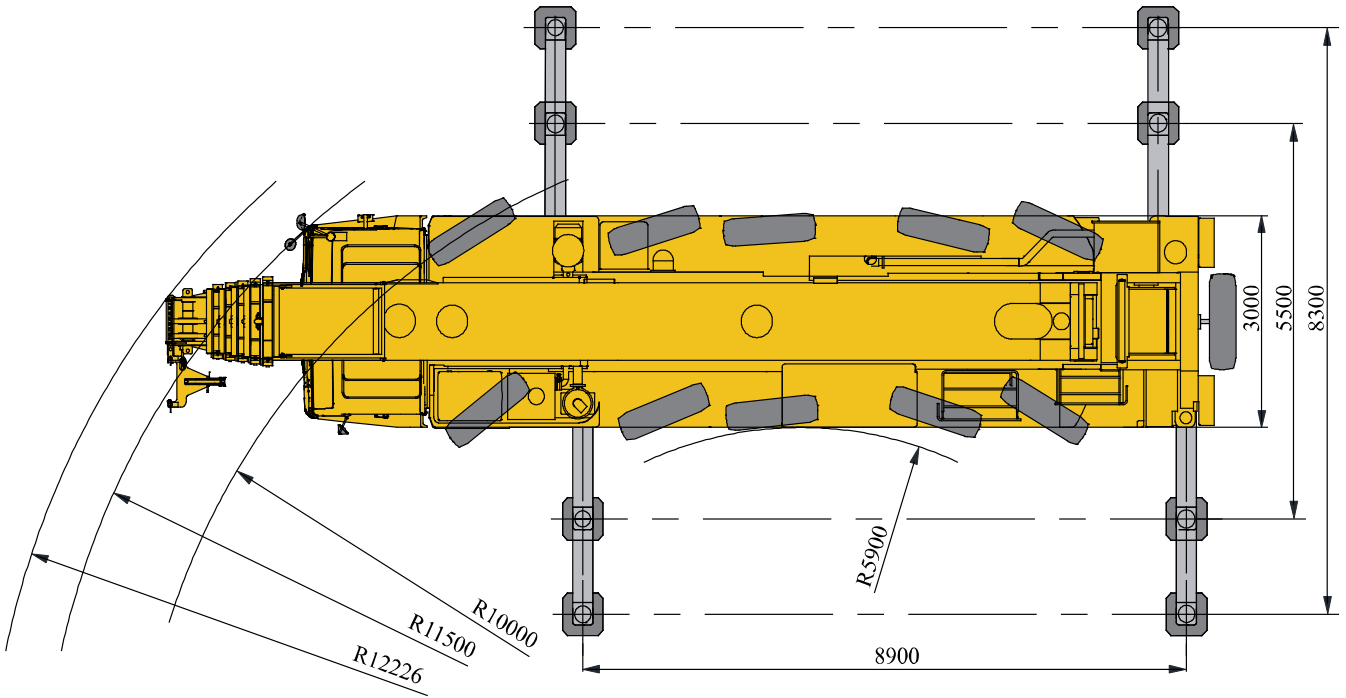
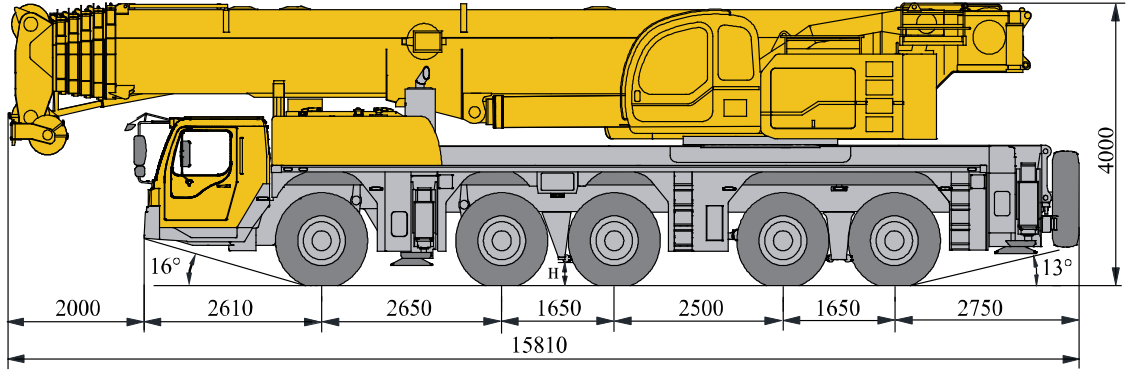
# 目录

## Content

目录	
Content	
尺寸参数 Dimensions	3
技术规格 Product Specifications	5-7
重量/作业速度 Weight / Working speeds	8
平衡重 Counterweight	9
臂架组合方案 Boom / Jib combinations	10-11
主臂 Boom	12-18
副臂 Jib	19-25
符号标识 Description of symbols	26
注意事项 Notes	27

# 尺寸参数

## Dimensions



385/95 R 25  
( 14.00 R 25 )

H

280mm

## 技术规格

### Technical specifications



#### 底盘

<b>车架</b>	徐工设计、制造，全覆盖式走台板，防扭转箱型结构，高强度钢材制造。
<b>支腿</b>	4支腿，H形布置，采用双级水平支腿，水平伸缩和垂直伸缩由液压控制，底盘两侧装有电控操纵控制台，控制台板装有水平仪、照明灯和增速按钮，支腿油缸均设有单向阀，且垂直支腿带有双向液压锁。
<b>发动机</b>	OM460LA.E3A/1，直列六缸水冷电喷柴油发动机，戴姆勒制造，额定功率361.1kW/1800rpm，最大扭矩2200Nm/1300rpm，国III排放标准。 燃油箱容积：450L。
<b>液压系统</b>	定量泵通过取力器联接至变速箱，用于支腿、转向和悬挂动作。
<b>变速箱</b>	德国ZF手、自一体电控变速箱，12个前进档，2个倒档，带缓速制动。
<b>分动箱</b>	德国KESSLER机械式分动箱，装有应急转向油泵。
<b>车桥</b>	德国KESSLER高强度车桥，配备气控盘式制动器。
<b>悬挂</b>	所有车桥均采用油气悬挂系统，减震效果好，具有自动调平、悬架升降、弹性刚性转换等功能。
<b>轮胎</b>	10个轮胎，1个备胎，每桥均装单胎，米其林制造，承载力大。 轮胎规格：385/95R25（14.00R25）
<b>转向</b>	全桥转向，采用先进的电液比例转向控制技术，可适应多种工况的要求，实现多种转向模式。
<b>制动</b>	行车制动：双回路气压制动，作用于所有车轮。

驻车制动：弹簧储能制动，作用于2-5轴车轮。

辅助制动：发动机排气制动和缓速制动，变速箱缓速制动，安全可靠，延长制动摩擦片使用寿命。

#### 驾驶室

新型钢结构豪华全宽驾驶室，可调式座椅，采用悬浮式连接结构，后部装有减震器。配备电动升降器的安全玻璃、电动调节后视镜、可调节高度及角度方向盘，倒车显示器、大屏幕彩色液晶显示器和CD音响等。新型组合式中控台布局安全合理，采用圆弧造型，体现人性化的设计。  
标配冷暖空调。

**电气系统** 直流24伏特，2个电池串联。



#### 上车

<b>结构</b>	徐工设计、制造，高强度钢材制造。
<b>上车发动机</b>	TAD720VE，直列六缸水冷电控柴油发动机，沃尔沃制造，额定功率162kW/2100rpm，最大扭矩854Nm/1400rpm，国II排放标准。 燃油箱容积：300L。
<b>液压系统</b>	上车发动机驱动变量泵，用于起升、变幅、伸缩。采用进口电液换向阀，与变量柱塞泵进行良好的匹配，启停平稳，风冷式液压油冷却器，进、回油滤油器，有效降低系统油温。
<b>操纵方式</b>	先导电比例操纵，无级调速，由左右2个操纵手柄控制起重机的全部动作。
<b>主起升机构</b>	双折线绳槽卷筒，由液压马达驱动，内置行星齿轮减速器和常闭式制动器，并带有平衡阀。

## 技术规格

### Technical specifications

进口钢丝绳，钢丝绳端带绳头，直接安装于索套内，提高了更换速度，方便快捷。

**回转机构** 三排滚柱外齿式回转支承，由液压马达驱动，内置行星齿轮减速器和常闭式制动器，可连续回转360°，具有动力控制或自由滑转的功能，可无级调速。

**操纵室** 带大圆弧玻璃，外开式门，可调式座椅可翻仰20°，装有安全玻璃和顶部护栏，配备力矩限制器、电控箱、电动前窗刮水器、发动机动力加速踏板、发动机起动开关、前窗遮阳帘等。  
标配冷暖空调。

**安全装置** 液压平衡阀、液压溢流阀、液压双向锁、力矩限制器；三圈保护器，防止钢丝绳过放；臂头设置高度限位，防止钢丝绳过卷；风速仪，检测高空风速。

**力矩限制器** 当实际力矩接近过载时，发出听视觉警报，并在过载之前自动停止危险动作。具有超载记忆功能（黑匣子）和故障自诊断功能。

**组合配重** 总重64t，有12t、23t、34t、46t和64t五种组合方式。

**电气系统** 直流24伏特，2个电池串联。

15°和30°三种固定副臂安装角。

副臂长度：11.55m~20m。

**臂端单滑轮** 单滑轮，安装在主臂顶端用于单股钢丝绳起重作业。臂端单滑轮的起重性能同11.55m副臂0°安装角的起重性能。

### 选装配置

**上车发动机** BF6M1013ECP，直列六缸水冷机械柴油发动机，道依茨（大连）制造，额定功率173kW/2100rpm，最大扭矩906Nm/1400rpm，国II排放标准。

**副臂加长节** 1节，桁架式焊接结构，副臂长度可增加至28m。

**副起升机构** 双折线绳槽卷筒，由液压马达驱动，内置行星齿轮减速器和常闭式制动器，并带有平衡阀。

**轮胎** 10个轮胎，1个备胎，每桥均装单胎，双钱制造，承载力大。  
轮胎规格：385/95R25（14.00R25）

**吊钩** 180t吊钩，最大倍率18，吊钩自重2550kg，双钩。



### 臂架系统

**主臂** 6节，“U”形截面的筒形焊接结构。单缸插销伸缩机构，1个装有安全阀的双作用的伸缩油缸，控制每节臂的伸缩，多种伸缩模式可供选择。

主臂长度：13.2m~62m。

**副臂** 2节，桁架式和箱型焊接结构，有0°、

产品各部件明细如上所述，具体部件明细请参照产品报价单



## 技术规格

## Technical specifications



### Chassis

<b>Frame</b>	Designed and manufactured by XCMG, with all covered walking surface, anti-torsion box structure and optimal load-bearing structure design, made of imported high strength steel.
<b>Outrigger</b>	4 outriggers, H-shaped arrangement, lateral and vertical outrigger controlled by the hydraulic control. Both sides of the chassis equipped with electronic control console, the console installed with luminous level, lighting and speed buttons; outrigger cylinders equipped with one-way valve, and the vertical outrigger has two-way hydraulic lock.
<b>Engine</b>	OM460LA.E3A/1, in line six-cylinder water-cooled EFI diesel engine, manufactured by Daimler, rated power 361.1kW /1800rpm, max. torque 2200Nm / 1300rpm, the national III emission standards. Fuel tank capacity : 450L
<b>Hydraulic system</b>	.The constant gear pump is connected to the transmission through PTO for controlling the movements of outriggers, steering and suspension.
<b>Gearbox</b>	Mechanical transmission imported from ZF Germany, with manual MT and automatic AT control, equipped with retarded brake, with 12 forward gears and 2 reverse gears available.
<b>Transferecase</b>	Mechanical transfer box is originally imported from KESSLER Germany, equipped with an emergency steering oil pump.
<b>Axles</b>	High strength axle with reliable performance, imported originally from KESSLER Germany, equipped with pneumatically controlled drum brake.
<b>Suspension</b>	Hydro-pneumatic suspension is adopted for all axles, providing good shock absorbing effect. Functions of automatic leveling, suspension lifting, elastic/rigid state switch-over, etc. are available.
<b>Tires</b>	10 tires and 1 spare tire, each axle is equipped with single tire, manufactured by Michelin, large bearing capacity. Tire specifications:385/95R25 ( 14.00R25 )
<b>Steering</b>	All axles steering, advanced electro-hydraulic proportional steering control is suitable for various demands of working conditions, some steering modes followed may be realized.
<b>Brakes</b>	Service brake: double-circuit air pressure brake, acting on all wheels. Parking brake: spring energy brake, acting on

wheels of 2-5 axles.

Auxiliary brake: engine retarded brake, engine exhaust brake, transmission retarded brake, safe and reliable, which prolongs the service life of brake and friction disc.

**Driver's cab** New type steel structure full dimension cab with suspension connecting structure, and there is shock absorb fitted at the rear of the cab, equipped with adjustable seats, safety glass of electrically operated door window lift , electric-adjustable mirrors, steering wheel adjustable in height and angle, reverse displayer, large screen liquid crystal display and CD player.  
Combined control panel arranged safely, reasonably and ergonomically presents humanized design concept. Heater and air conditioner are standard.

**Electrical System** DC 24 volts is in series with two 12-volt battery packs.



### Superstructure

<b>Frame</b>	Designed and manufactured by XCMG, made of high-strength steel.
<b>Superstructure Engine</b>	TAD720VE, inline six-cylinder water-cooled EFI diesel engine, manufactured by Volvo, rated power 162kW / 2100rpm, max. torque of 854Nm / 1400rpm, state II emission standards. Fuel tank capacity : 320L.
<b>Hydraulic system</b>	Variable pump driven by superstructure engine, used for hoisting, elevating, and telescoping operation. Imported electro-hydraulic direction valve, matching perfectly stably. Air-cooled hydraulic oil cooler, which may effectively reduce the temperature of oil in the system, suction filter and return filter.
<b>Operating mode</b>	Stepless speed regulation is available. Electric proportional controlled operation system is equipped with two electric proportional control levers, hydraulic pump and proportional valve, so as to realize all the movements of crane.
<b>Main winch system</b>	Hydraulic controlled speed regulation, with groove drum equipped, driven by hydraulic variable motor through planetary gear reducer and with built-in constant closed brake and balance valve fitted. Imported wire rope and pouch socket makes reeving easy and fast. It has features of high speed with light load and low speed with heavy load.

# 技术规格

## Technical specifications

<b>Slewing system</b>	3-row roller type external gearing slewing ring, with symmetrically arranged double slewing mechanism. Hydraulic motor drives planetary gear reducer to drive, for 360° continuous rotation. Power control and free slewing function as well as stepless speed regulation are available.
<b>Operator's cab</b>	Large arc glass, outward opening door, adjustable seat with 20° tilting are adopted. Safety glass and top protective rails, LMI, controller box, electric wind shield wipers, engine accelerator pedal, engine start switch and windshield visor, etc. are also available.
<b>Safety devices</b>	Hydraulic counterbalance valve, Hydraulic relief valve, Hydraulic double-way valve, LMI, Lowering limiter avoids wire rope over-releasing; Anti-two block at boom head avoids wire rope over-winding; Anemometer: check whether aerial wind velocity is in safe working range.
<b>LMI</b>	The safety protection device is installed in operator's cab. When actual moment approaches overload value, it may send out visual alarm, and automatically stop dangerous movements before overloading. Overload memory function (black box) and fault self-diagnosis function are available.
<b>Combined counterweight</b>	Total weight is 64t. 5 counterweight combinations of 12t, 23t, 34t, 46t and 64t are available.
<b>Electrical System</b>	DC 24 volts is in series with two 12-volt battery packs.



### Boom system

<b>Boom</b>	6-section, U-shape cross section, welding structure. Single-cylinder pinning interlocked telescoping system. One double-acting cylinder with safe valve assemblies used for controlling the telescoping movement of all booms, realizing various boom length combinations. various telescoping pattern are available. Boom length:13.8m ~ 61m.
<b>Jib</b>	2-section,lattice and box welding structure, with 0° , 15° and 30° jib offset angles available. Jib length:11.55m ~ 20m.
<b>Single top</b>	Single pulley, Fitted at boom head, used for single line operation. Its lifting performance is the same as that for11.55 jib with 0° offset angle .

### Additional equipment

<b>Superstructure Engine</b>	BF6M1013ECP, inline six-cylinder water-cooled mechanical diesel engine, manufactured by DEUTZ(Dalian), rated power 173kW / 2100rpm, the maximum torque of 906Nm / 1400rpm, state II emission standards.
<b>Extension jib</b>	1-section,lattice welding structure, combined jib length can reach 28m.
<b>Auxiliary winch system</b>	Hydraulic controlled speed regulation, with groove drum equipped, driven by hydraulic variable motor through planetary gear reducer, and with built-in constant closed brake and balance valve fitted.
<b>Tires</b>	10tires. Each axle is equipped with single tire, manufactured by Double coin, large bearing capacity. Tire specifications:385/95R25 ( 14.00R25 )
<b>Hook</b>	180t hook block; the maximum parts of line are 18 and the hook dead weight is 2550kg; double hook.

**Product parts details As mentioned above, please refer to the product quotation for specific parts.**

## 重量 Weight






车桥 Axle	1	2	3	4	5	总重量 Total weight
t	12	12	12	12	12	60







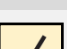
吊钩 Hook	倍率 No. of lines	吊钩重量 Weight kg	备注 Remarks
140t	13	2400	双钩 Double hook
80t	7	1150	双钩 Double hook
30t	3	600	单钩 Single hook
11t	1	460	单钩 Single hook

## 作业速度 Working speeds



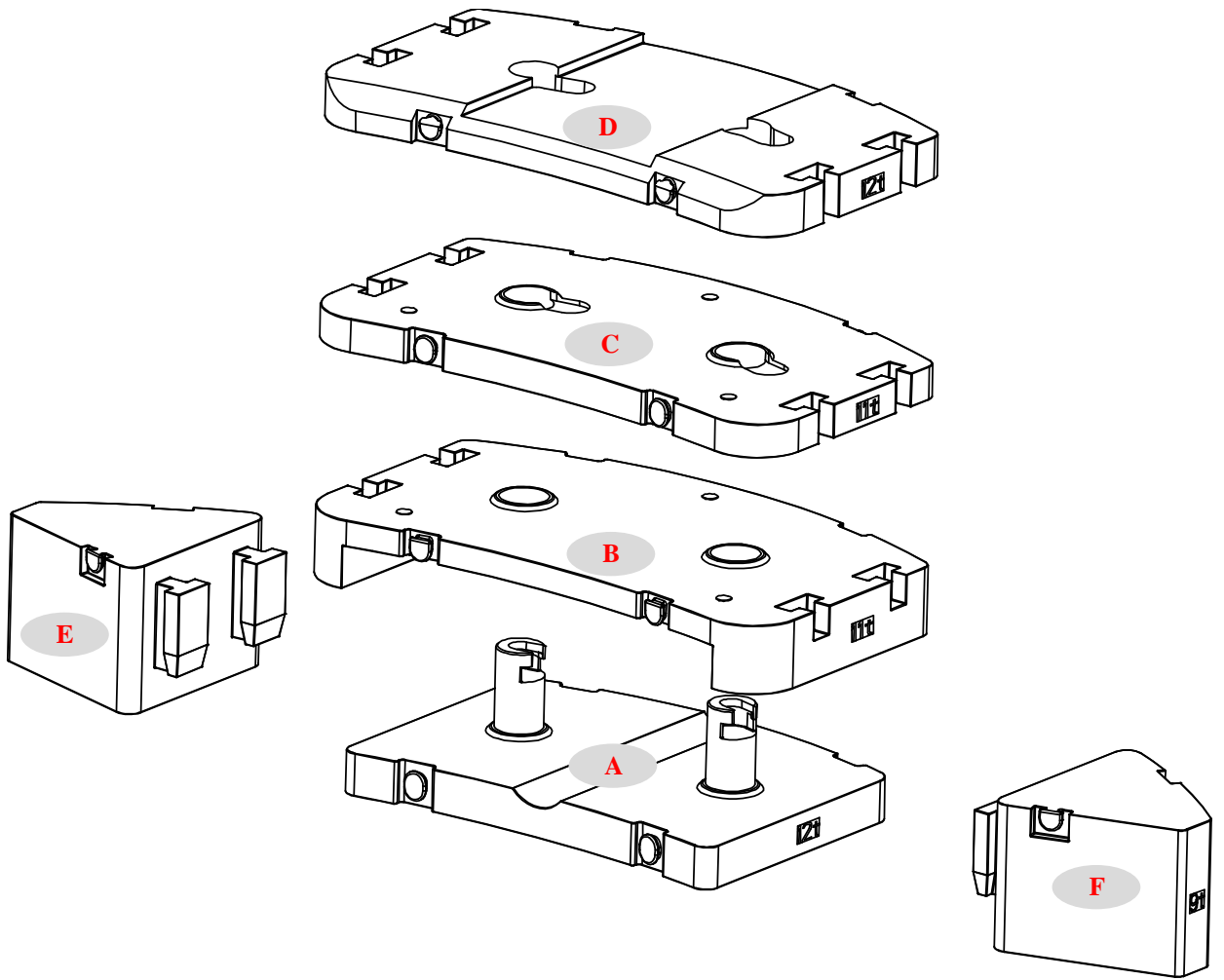
		
385/95 R 25 ( 14.00 R 25 )	2.1 ~ 80	65%



作业机构 Drive	作业速度 Working speed	最大单绳拉力 Max. single line pull	钢丝绳直径/长度 Rope diameter/ length
	0-115 m/min, 单绳, 第四层 m/min, single line, 4th layer	126 kN	24 mm/300 m
	0-110 m/min, 单绳, 第四层 m/min, single line, 4th layer	126 kN	24 mm/200 m
	0-1.3 r/min		
	从-0.5°抬起至82°约80s Approx. 80s for boom elevation from -0.5° to 82°		
	从13.2m伸出至62m约500s Approx. 500s for boom extension from 13.2m to 62m		



# 平衡重 Counterweight

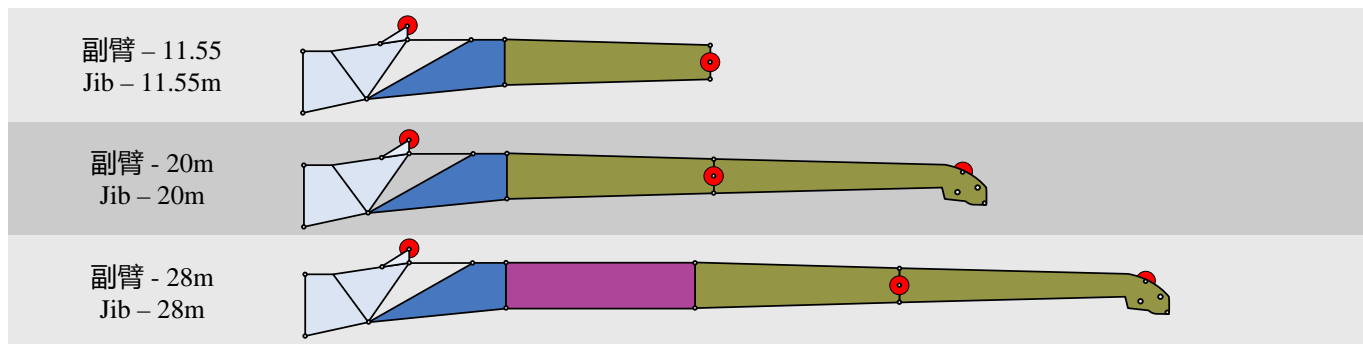


平衡重 Counterweight	A	B	C	D	E	F
尺寸 (长×宽×高) mm Size (L×W×H) mm	3000×2186 ×845	3800×2280 ×485	3800×2280 ×253	3800×2280 ×282	1500×1545 ×970	1500×1545 ×970
重量 t Weight t	12t	11t	11t	12t	9t	9t

工况模式 Working mode	64t	46t	34t	23t	12t
组合形式 Combinations	A+B+C+D+ E+F	A+B+C+D	A+B+C	A+C	A

## 臂架组合方案

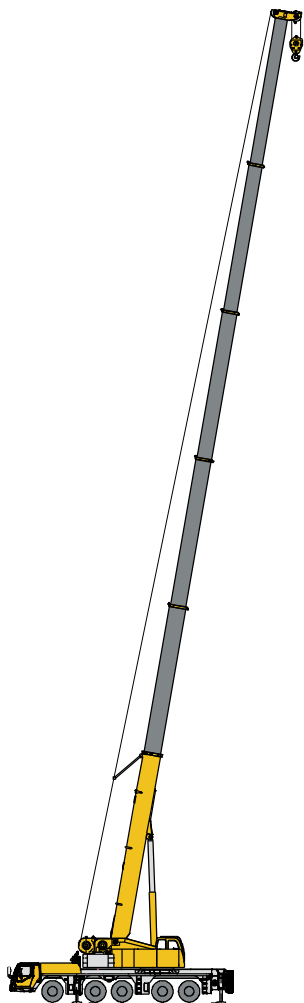
### Boom / Jib combinations



部件 Component	结构形式 Structure	尺寸 (长×宽×高) / mm Size ( L×W×H ) / mm	重量 / kg Weight / kg
连接架 Connection bracket		2470×1020×2320	362
旋转架 Swinging bracket		2970×900×1380	320
一节副臂总成 First jib section assembly		8140×760×940	604
二节副臂总成 Second jib section assembly		8540×590×700	492
副臂加长节 Jib extension		8200×1100×800	550

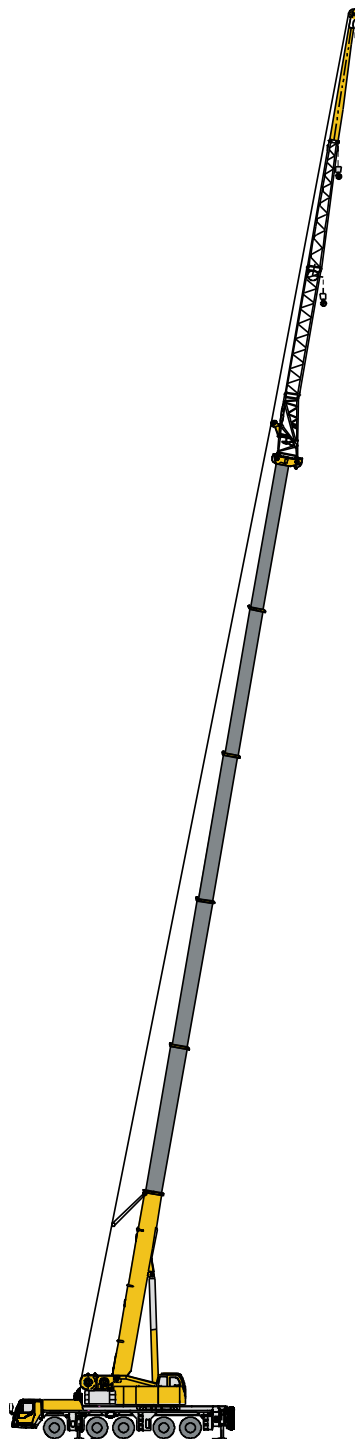
# 臂架组合方案

## Boom / Jib combinations



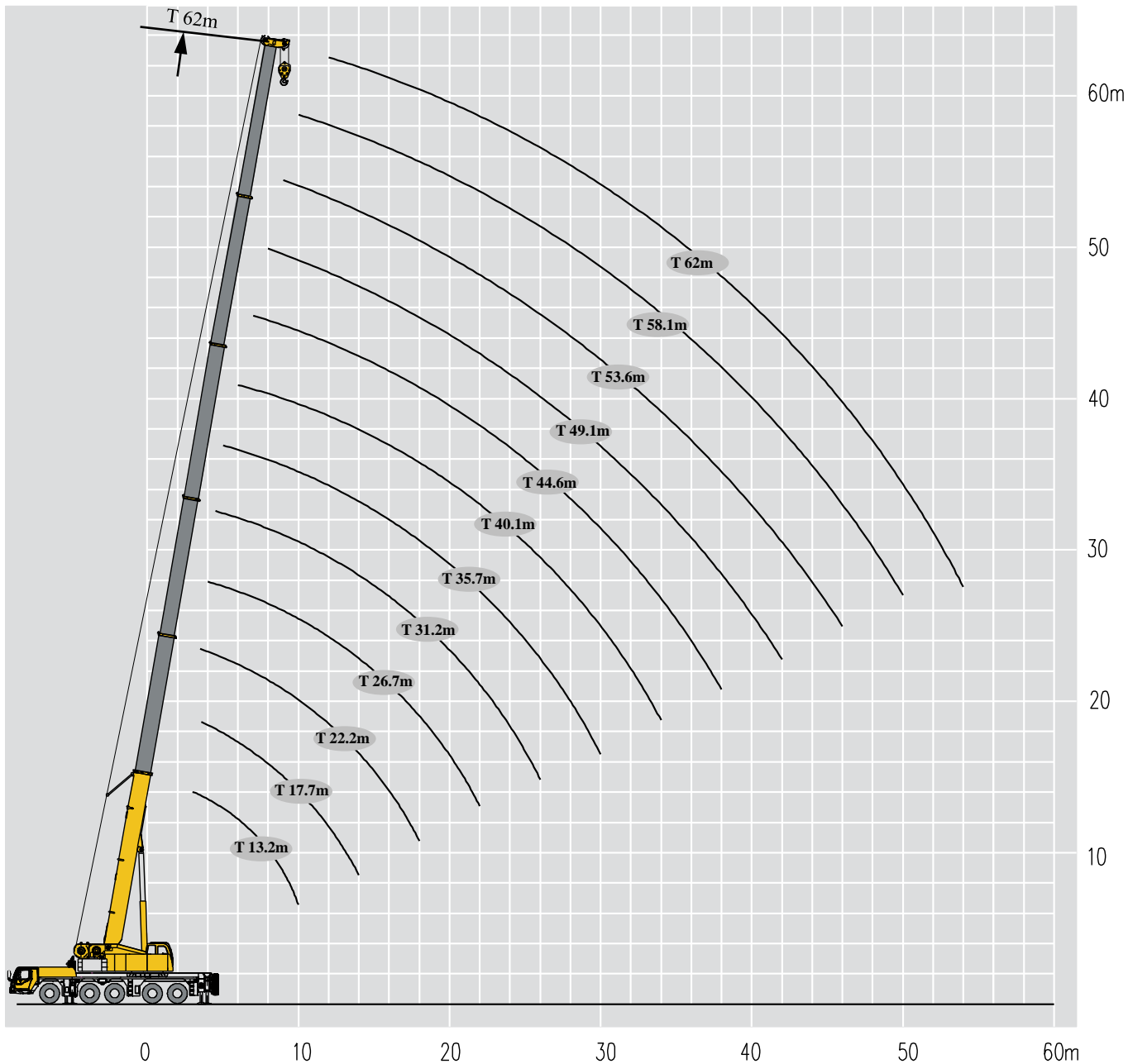
主臂  
Telescopic boom

T : 13.2~62 m



副臂  
Jib

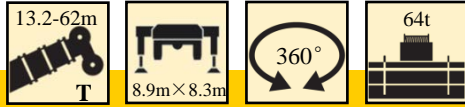
T : 44.6~62m  
J : 11.55~28 m



# 起重性能表

## Lifting capacities

T 13.2~62m



↔ m	13.2m	17.7m	17.7m	22.2m	22.2m	22.2m	26.7m	26.7m	26.7m	31.2m	31.2m	31.2m	35.7m	35.7m	↔ m
3	*180														3
3.5	135.0	120.0	76.0												3.5
4	122.0	116.0	73.0	115.0	109.0	52.0									4
4.5	115.0	108.0	70.0	105.0	102.0	49.5	95.0	94.0	52.0						4.5
5	109.0	101.0	67.0	101.0	96.0	46.7	92.0	91.0	49.8	77.0	76.0	49.0			5
6	90.0	89.0	61.0	87.0	85.5	41.4	86.0	85.0	45.3	70.0	69.7	45.6	64.0	62.0	6
7	79.0	78.0	56.0	78.0	77.0	36.6	77.0	76.0	41.3	67.0	64.6	42.0	60.0	57.2	7
8	69.0	68.0	53.0	67.0	65.7	33.0	67.0	66.0	36.6	65.0	58.7	38.0	59.0	55.7	8
9	61.0	61.0	48.0	61.0	57.0	30.4	61.0	59.0	33.4	61.0	53.6	34.8	55.0	52.7	9
10	55.0	54.0	45.0	54.0	52.7	28.3	54.0	53.0	31.0	54.0	52.2	32.7	52.0	50.1	10
12		48.0	40.0	47.0	45.1	24.4	47.0	46.0	27.0	51.0	50.0	28.6	48.0	44.7	12
14		38.0	35.0	41.0	40.5	21.7	41.0	40.0	23.8	43.0	42.0	25.7	42.0	38.9	14
16				35.0	35.1	19.2	35.6	34.6	21.2	36.8	36.1	22.9	36.6	33.3	16
18				29.5	30.0	17.2	29.4	28.3	19.1	31.5	31.5	20.8	31.1	29.0	18
20							24.6	23.7	17.5	27.5	27.5	19.1	27.1	24.5	20
22							20.9	20.0	15.9	24.0	24.0	17.6	24.1	22.2	22
24										20.5	20.5	16.2	21.5	19.2	24
26										18.0	18	15.1	19.0	16.8	26
28													16.5	14.8	28
30													14.5	13.1	30
组合	00000	01000	00001	11000	02000	00002	11100	21000	00012	11110	21100	00022	11111	21110	组合

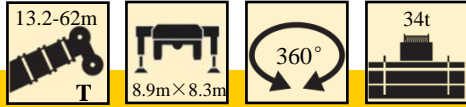
↔ m	35.7m	40.1m	40.1m	40.1m	44.6m	44.6m	44.6m	49.1m	49.1m	49.1m	53.6m	53.6m	58.1m	62m	↔ m
6	44.0														6
7	40.3	51.0	45.0	32.5											7
8	35.5	46.7	43.0	30.6	40.1	35.3	30.2								8
9	32.7	45.3	40.1	28.7	38.1	33.4	28.5	34.5	25.0	24.5					9
10	30.4	41.2	36.8	26.8	35.1	31.5	26.9	32.8	23.8	23.4	27.0	22.5			10
12	26.6	37.0	32.6	23.3	32.8	28.4	23.8	30.3	22.4	21.9	24.6	21.1	20.7	17.6	12
14	23.3	32.7	29.8	20.6	29.4	25.6	21.4	26.6	20.0	19.5	23.7	19.8	19.8	17.2	14
16	21.0	29.2	26.9	18.4	26.2	23.4	19.3	23.6	17.9	17.6	22.0	18.1	19.0	16.5	16
18	19.0	26.0	24.8	16.4	24.3	21.4	17.5	21.6	17.1	15.8	20.2	16.6	18.2	16.0	18
20	17.2	24.6	22.9	14.9	21.7	19.5	16.0	20.0	16.3	15.3	18.5	15.3	16.9	15.2	20
22	15.7	21.9	21.2	13.7	20.3	17.9	14.7	18.4	15.2	15.0	16.9	14.0	15.8	14.7	22
24	14.3	20.5	19.7	12.5	17.8	16.8	13.4	16.8	14.1	13.8	15.4	12.9	14.8	14.0	24
26	13.3	17.5	18.6	12.0	16.9	15.6	12.4	15.3	13.1	12.8	14.6	11.9	13.5	12.8	26
28	12.3	15.5	16.6	11.0	15.2	14.5	11.6	14.0	12.1	11.9	13.3	11.1	12.5	11.5	28
30	11.4	13.8	14.9	10.2	14.0	13.4	10.8	13.0	11.3	11.2	12.3	10.3	11.8	10.8	30
32		12.4	13.4	9.5	12.3	12.7	10.1	12.1	11.0	11.0	11.5	9.5	11.0	10.2	32
34		11.1	12.1	8.8	11.0	11.5	9.3	11.1	10.4	10.3	10.7	8.9	10.2	9.5	34
36					9.9	10.5	8.8	10.0	9.9	9.6	9.9	8.3	9.6	8.8	36
38					8.9	9.5	8.2	9.0	9.2	9.0	9.2	7.7	8.7	8.3	38
40								8.1	8.7	8.4	8.3	7.1	7.9	7.8	40
42								7.4	8.1	7.9	7.6	6.3	7.2	7.2	42
44											6.9	5.6	6.5	6.5	44
46											6.2	5.0	5.9	5.8	46
48													5.4	5.4	48
50													4.9	4.9	50
52														4.5	52
54														4.2	54
组合	00122	21111	11112	00222	22111	11122	01222	22211	11222	02222	22221	12222	22222	33333	组合



# 起重性能表

## Lifting capacities

T 13.2~62m



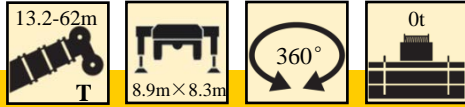
m	Lifting Capacity (t)														m
	13.2m	17.7m	17.7m	22.2m	22.2m	22.2m	26.7m	26.7m	26.7m	31.2m	31.2m	31.2m	35.7m	35.7m	
3	140.0														3
3.5	130.0	120.0	71.4												3.5
4	121.0	116.0	68.6	111.0	105.0	48.0									4
4.5	112.0	108.0	65.8	104.0	98.0	47.0	93.1	89.3	49.4						4.5
5	101.0	98.0	63.0	92.2	91.2	44.3	91.1	86.5	47.3	75.5	74.4	46.6			5
6	86.0	85.0	57.3	81.9	81.4	37.2	83.2	82.2	43.1	68.6	68.3	43.3	60.8	58.9	6
7	75.5	75.0	52.6	74.7	73.5	35.0	73.1	71.8	39.2	65.7	63.3	39.9	57.0	54.4	7
8	66.2	66.0	49.8	65.0	62.4	32.0	64.0	63.1	34.8	62.2	57.0	36.1	56.1	52.9	8
9	58.0	58.0	45.1	57.0	54.1	28.0	55.1	54.2	31.8	55.4	52.1	33.0	52.3	48.2	9
10	49.5	48.6	42.3	47.7	47.4	24.9	49.4	48.5	29.5	48.5	47.5	31.0	48.5	46.6	10
12		37.5	37.6	36.6	37.3	23.2	37.1	36.0	25.6	37.9	36.5	27.2	38.7	37.2	12
14		29.0	30.4	28.1	28.9	20.8	28.4	27.3	22.6	29.2	27.8	24.4	29.9	28.6	14
16				21.8	23.6	19.2	22.3	21.3	20.1	23.1	21.9	21.8	23.9	22.5	16
18				17.4	19.0	16.8	18.0	17.0	18.1	18.8	17.6	19.7	19.6	18.2	18
20							14.7	13.8	16.6	15.6	14.3	18.2	16.3	15.0	20
22							12.3	11.3	15.1	13.0	11.9	15.8	13.8	12.5	22
24										11.0	9.9	13.7	11.8	10.5	24
26										9.4	8.2	12.1	10.2	8.9	26
28													8.7	7.6	28
30													7.6	6.3	30
组合	00000	01000	00001	11000	02000	00002	11100	21000	00012	11110	21100	00022	11111	21110	组合

m	Lifting Capacity (t)														m
	35.7m	40.1m	40.1m	40.1m	44.6m	44.6m	44.6m	49.1m	49.1m	49.1m	53.6m	53.6m	58.1m	62m	
6	41.8														6
7	38.3	49.4	43.7	31.5											7
8	33.7	45.3	41.7	29.7	39.2	34.3	29.4								8
9	31.1	44.0	38.9	27.9	37.3	32.7	28.0	32.8	23.7	23.2					9
10	28.9	40.0	35.6	26.0	34.4	30.9	26.3	31.1	22.6	22.2	25.9	20.9			10
12	25.3	35.9	31.6	22.6	32.1	27.9	23.3	28.8	21.2	20.8	24.6	19.0	20.1	17.2	12
14	22.1	30.0	28.9	20.0	28.8	25.0	20.9	25.3	19.0	18.5	22.5	18.8	18.8	16.3	14
16	19.9	23.8	25.0	17.8	23.9	22.9	19.0	22.4	17.0	16.7	20.9	17.2	18.1	15.7	16
18	18.1	19.4	20.6	15.9	19.5	20.7	17.2	18.9	16.3	15.0	18.9	15.7	17.3	15.2	18
20	16.3	16.1	17.3	14.5	16.2	17.3	15.7	15.7	15.5	14.6	15.8	14.5	16.1	14.4	20
22	15.7	13.6	14.6	13.3	13.6	14.8	14.4	13.3	14.5	14.3	13.4	13.3	13.8	13.7	22
24	13.6	11.5	12.6	12.1	11.6	12.7	13.2	11.3	12.5	12.8	11.4	12.2	11.9	11.8	24
26	11.9	9.9	11.0	11.7	9.9	11.1	11.9	9.7	10.9	11.2	9.9	10.5	10.3	10.2	26
28	10.5	8.5	9.5	10.7	8.5	9.6	10.5	8.4	9.6	9.8	8.6	9.2	8.9	8.8	28
30	9.3	7.3	8.3	9.5	7.4	8.4	9.2	7.2	8.5	8.6	7.4	8.2	7.8	7.8	30
32		6.3	7.4	8.4	6.3	7.4	8.2	6.3	7.4	7.7	6.5	7.1	6.8	6.8	32
34		5.3	6.5	7.6	5.3	6.6	7.4	5.3	6.6	6.8	5.6	6.4	6.0	6.0	34
36					4.4	5.8	6.6	4.5	5.9	6.1	4.8	5.6	5.3	5.2	36
38					3.6	5.1	5.9	3.7	5.2	5.4	4.1	4.9	4.6	4.7	38
40								3.1	4.7	4.8	3.5	4.4	4.0	4.0	40
42								2.5	4.1	4.3	2.9	3.9	3.4	3.4	42
44											2.3	3.4	2.8	2.9	44
46											1.9	2.9	2.8	2.8	46
48													2.4	2.4	48
50													2.1	2.1	50
52														1.7	52
组合	00122	21111	11112	00222	22111	11122	01222	22211	11222	02222	22221	12222	22222	33333	组合

# 起重性能表

## Lifting capacities

T 13.2~62m



m	Lifting Capacity (t)														m
	13.2m	17.7m	17.7m	22.2m	22.2m	22.2m	26.7m	26.7m	26.7m	31.2m	31.2m	31.2m	35.7m	35.7m	
3	135.0														3
3.5	124.0	119.0	64.6												3.5
4	112.0	111.0	62.1	98.0	98.0	44.2									4
4.5	100.0	96.0	59.5	89.3	89.3	42.1	85.5	84.6	45.8						4.5
5	90.3	84.6	57.0	80.8	80.8	39.7	75.0	73.0	42.8	73.2	66.8	39.2			5
6	70.2	66.6	53.7	63.9	63.9	35.2	62.1	60.3	39.0	60.3	58.5	36.4	57.6	51.4	6
7	51.4	50.7	47.6	49.4	50.5	31.1	49.0	47.3	34.7	48.5	46.6	33.6	47.6	45.1	7
8	38.3	37.8	40.9	36.6	37.6	28.1	35.4	33.8	31.5	34.5	32.7	30.4	34.4	32.5	8
9	29.1	28.5	31.3	27.4	28.3	25.9	27.2	25.9	28.8	27.1	25.4	27.8	26.2	24.5	9
10	23.0	23.5	24.9	21.3	22.1	23.4	21.3	20.1	24.1	21.1	19.7	24.7	20.8	19.3	10
12		15.5	17.0	13.8	14.5	17.2	13.8	12.6	16.8	14.3	13.0	17.5	14.2	12.8	12
14		10.6	12.3	9.3	9.9	13.0	9.8	8.4	13.3	10.1	8.9	13.1	10.2	8.9	14
16				6.2	6.6	10.0	6.8	5.3	10.3	7.3	5.8	10.1	7.9	6.5	16
18				3.8	4.3	7.7	4.5	3.1	8.1	5.3	3.7	8.0	6.2	4.6	18
20							2.8	1.4	6.5	3.6	2.1	6.5	4.6	2.9	20
22							1.5		5.2	2.3		5.2	3.3	1.7	22
24												4.1	2.2		24
26												3.2			26
28															28
30															30
组合	00000	01000	00001	11000	02000	00002	11100	21000	00012	11110	21100	00022	11111	21110	组合

m	Lifting Capacity (t)														m
	35.7m	40.1m	40.1m	40.1m	44.6m	44.6m	44.6m	49.1m	49.1m	49.1m	53.6m	53.6m	58.1m	62m	
6	35.2														6
7	31.1	43.3	38.3	26.6											7
8	27.3	33.5	35.2	24.5	32.8	28.7	24.6								8
9	25.2	25.5	27.0	23.0	25.3	26.8	22.8	27.8	21.2	20.7					9
10	22.5	20.2	21.5	21.4	20.0	21.5	21.5	22.1	19.5	19.2	20.9	18.4			10
12	15.8	13.6	14.8	15.7	13.5	14.8	15.7	16.6	15.0	15.3	14.2	15.1	14.7	14.6	12
14	12.1	9.8	10.8	12.0	9.6	10.8	11.6	11.9	13.5	13.8	10.9	11.7	11.3	11.3	14
16	9.7	7.4	8.5	9.6	7.3	8.4	9.3	8.7	10.3	10.6	8.1	8.9	8.6	8.5	16
18	7.9	5.5	6.8	7.8	5.5	6.8	7.6	5.8	7.2	7.5	6.1	6.9	6.6	6.5	18
20	6.4	3.9	5.3	6.3	3.8	5.3	6.1	4.1	5.7	5.9	4.5	5.4	5.0	5.0	20
22	5.2	2.6	4.0	5.1	2.5	4.0	4.8	2.8	4.5	4.6	3.2	4.2	3.7	3.7	22
24	4.2	1.5	2.9	4.0	1.5	3.2	3.9	1.7	3.4	3.6	2.1	3.2	2.6	2.6	24
26	3.4		2.1	3.2		2.4	3.0		2.5	2.7		2.3	1.8	1.8	26
28	2.6			2.4		1.7	2.3		1.8	1.9					28
30	2.0			1.8											30
组合	00122	21111	11112	00222	22111	11122	01222	22211	11222	02222	22221	12222	22222	33333	组合

# 起重性能表

## Lifting capacities

T 13.2~62m



m	Lifting Capacity (t)														m
	13.2m	17.7m	17.7m	22.2m	22.2m	22.2m	26.7m	26.7m	26.7m	31.2m	31.2m	31.2m	35.7m	35.7m	
3	128.0														3
3.5	117.0	112.0	70.8												3.5
4	108.0	103.0	68.0	99.0	99.0	48.0									4
4.5	100.0	96.0	65.2	92.0	92.0	47.5	89.0	88.0	48.4						4.5
5	93.0	89.0	62.4	86.0	86.0	44.8	83.0	82.0	46.8	74.0	72.9	45.1			5
6	82.0	79.0	58.6	76.0	76.0	39.7	74.0	73.0	42.7	67.2	67.0	41.6	57.6	55.8	6
7	73.0	70.0	54.9	67.0	67.0	34.5	65.0	64.0	35.6	64.0	62.0	38.2	55.2	48.6	7
8	58.9	58.1	50.9	57.1	57.9	31.4	57.0	56.0	34.8	56.0	55.0	32.3	53.1	45.7	8
9	48.2	47.5	46.1	46.6	47.4	28.3	47.0	45.8	30.2	47.8	46.4	29.5	46.8	41.6	9
10	40.4	39.9	41.2	39.0	39.7	27.0	39.4	38.3	29.5	40.2	38.8	28.0	41.0	39.5	10
12		29.5	31.0	28.7	29.4	22.7	29.2	28.1	25.8	30.0	28.7	25.7	30.8	29.4	12
14		22.8	24.3	22.1	22.8	21.1	22.6	21.6	22.4	23.4	22.1	23.2	24.1	22.8	14
16				17.4	18.1	18.9	18.0	17.0	20.0	18.8	17.6	19.6	19.5	18.2	16
18				14.0	14.7	16.5	14.6	13.6	17.5	15.4	14.2	17.1	16.1	14.9	18
20							12.0	11.0	14.9	12.7	11.6	15.5	13.5	12.3	20
22							9.9	8.9	12.8	10.7	9.5	13.4	11.4	10.2	22
24										9.0	7.8	11.6	9.7	8.5	24
26										7.6	6.2	10.2	8.3	7.1	26
28													7.2	5.8	28
30													6.2	4.6	30
组合	00000	01000	00001	11000	02000	00002	11100	21000	00012	11110	21100	00022	11111	21110	组合

m	Lifting Capacity (t)														m
	35.7m	40.1m	40.1m	40.1m	44.6m	44.6m	44.6m	49.1m	49.1m	49.1m	53.6m	53.6m	58.1m	62m	
6	39.6														6
7	34.3	47.4	41.7	29.5											7
8	29.1	43.3	39.7	26.7	37.2	34.3	29.4								8
9	26.8	42.0	36.9	24.9	35.3	32.7	28.0	32.8	21.7	21.2					9
10	25.4	38.3	34.1	23.3	33.1	30.6	26.1	31.1	20.6	20.2	25.9	20.9			10
12	23.4	30.1	31.4	19.6	27.9	27.6	23.1	26.8	19.2	19.5	24.6	19.0	20.1	17.2	12
14	21.0	23.6	24.7	17.0	23.4	24.7	20.7	23.4	18.0	17.5	23.4	17.4	19.5	16.5	14
16	18.9	19.0	20.1	14.1	18.8	20.1	18.8	18.9	16.0	15.7	18.9	15.4	18.6	15.8	16
18	17.5	15.6	16.7	13.7	15.5	16.7	15.8	15.5	15.3	14.0	15.6	13.6	16.0	15.2	18
20	15.3	13.0	14.1	13.4	12.9	14.0	14.4	13.0	13.3	12.8	13.1	13.4	13.5	13.4	20
22	13.2	10.9	12.0	12.3	10.8	12.0	12.8	10.9	12.2	11.5	11.1	11.8	11.5	11.4	22
24	11.5	9.3	10.3	11.2	9.2	10.3	11.1	9.3	10.5	10.8	9.4	10.2	9.9	9.8	24
26	10.1	7.9	8.9	10.0	7.8	8.9	9.7	7.9	9.2	9.4	8.1	8.8	8.5	8.5	26
28	8.9	6.7	7.7	8.8	6.6	7.7	8.5	6.8	8.0	8.2	7.0	7.7	7.4	7.3	28
30	7.9	5.6	6.7	7.8	5.5	6.7	7.5	5.8	7.0	7.3	6.0	6.7	6.4	6.4	30
32		4.6	5.9	7.0	4.6	5.9	6.7	4.8	6.1	6.4	5.2	5.9	5.6	5.5	32
34		3.7	5.1	6.2	3.7	5.1	5.9	3.9	5.4	5.6	4.3	5.2	4.8	4.8	34
36					2.9	4.5	5.2	3.2	4.7	5.0	3.6	4.5	4.1	4.1	36
38					2.3	3.9	4.6	2.5	4.2	4.3	2.9	3.9	3.4	3.4	38
40								1.9	3.6	3.7	2.3	3.4	2.8	2.9	40
42									3.0	3.2	1.8	2.8	2.3	2.3	42
44												2.3	1.8	1.8	44
组合	00122	21111	11112	00222	22111	11122	01222	22211	11222	02222	22221	12222	22222	33333	组合

# 起重性能表

## Lifting capacities

T 13.2~62m



m	Lifting Capacity (t)														m
	13.2m	17.7m	17.7m	22.2m	22.2m	22.2m	26.7m	26.7m	26.7m	31.2m	31.2m	31.2m	35.7m	35.7m	
3	125.0														3
3.5	114.0	109.0	69.3												3.5
4	105.0	101.0	66.6	96.0	97.0	46.6									4
4.5	98.0	93.0	63.8	90.0	90.0	45.6	87.0	86.0	47.9						4.5
5	91.0	87.0	61.1	84.0	84.0	43.0	81.0	80.0	45.9	73.2	72.2	44.6			5
6	79.0	75.0	55.6	72.0	72.0	36.1	69.0	68.0	39.6	63.0	62.7	41.0	56.6	54.8	6
7	61.4	60.5	51.1	59.4	60.3	33.9	59.8	58.4	34.8	58.0	57.0	37.0	53.6	44.8	7
8	48.1	47.5	48.3	46.5	47.3	31.1	46.9	45.7	34.1	46.8	45.3	30.9	46.7	42.6	8
9	39.1	38.6	39.7	37.7	38.5	27.1	38.2	37.0	29.5	38.0	37.6	28.2	39.9	38.3	9
10	32.5	32.2	33.4	31.3	32.1	24.1	31.8	30.7	27.1	31.7	31.3	27.7	33.5	32.0	10
12		23.5	24.7	22.7	23.4	22.5	23.2	22.2	25.4	23.0	22.8	23.7	24.9	23.5	12
14		17.9	19.2	17.1	17.8	20.2	17.7	16.7	20.6	18.5	17.3	20.4	19.3	18.0	14
16				13.2	13.9	16.4	13.8	12.9	16.7	14.6	13.4	17.5	15.4	14.1	16
18				10.4	11.0	13.5	11.0	10.0	13.9	11.8	10.6	14.5	12.5	11.3	18
20							8.8	7.6	11.6	9.6	8.4	12.3	10.3	9.1	20
22							7.0	5.6	9.9	7.8	6.4	10.5	8.6	7.3	22
24										6.4	4.8	9.1	7.2	5.7	24
26										5.1	3.5	7.9	6.0	4.4	26
28													4.9	3.3	28
30													4.0	2.4	30
组合	00000	01000	00001	11000	02000	00002	11100	21000	00012	11110	21100	00022	11111	21110	组合

m	Lifting Capacity (t)														m
	35.7m	40.1m	40.1m	40.1m	44.6m	44.6m	44.6m	49.1m	49.1m	49.1m	53.6m	53.6m	58.1m	62m	
6	37.7														6
7	31.3	43.3	38.3	25.6											7
8	26.4	39.7	36.5	24.0	36.8	31.5	27.0								8
9	26.2	38.5	34.1	22.4	31.2	27.4	23.4	30.1	21.5	20.9					9
10	24.3	32.8	31.6	21.1	29.6	26.3	23.2	28.5	20.4	20.0	25.1	20.7			10
12	22.6	24.2	25.5	17.8	24.1	24.2	18.5	23.1	17.3	17.0	22.1	18.6	19.5	17.0	12
14	20.5	18.7	19.9	17.0	18.6	19.8	17.2	18.6	17.0	16.6	18.7	17.0	17.8	15.5	14
16	17.3	14.9	16.0	13.9	14.8	16.0	15.8	14.8	15.2	14.9	14.9	15.2	15.4	14.0	16
18	14.4	12.0	13.1	11.3	11.9	13.1	13.0	12.0	13.3	13.6	12.1	12.9	12.6	12.5	18
20	12.2	9.8	10.9	11.1	9.8	10.9	10.7	9.8	11.1	11.4	10.0	10.8	10.4	10.4	20
22	10.4	8.1	9.2	10.3	8.0	9.2	10.0	8.1	9.4	9.7	8.3	9.1	8.7	8.7	22
24	8.9	6.7	7.8	8.9	6.6	7.7	8.6	6.7	8.0	8.3	7.0	7.7	7.4	7.3	24
26	7.7	5.4	6.6	7.7	5.3	6.6	7.4	5.5	6.8	7.1	5.8	6.6	6.2	6.2	26
28	6.7	4.2	5.6	6.7	4.2	5.6	6.4	4.4	5.9	6.1	4.8	5.6	5.3	5.3	28
30	5.9	3.3	4.7	5.8	3.2	4.7	5.5	3.5	5.0	5.3	3.9	4.8	4.4	4.4	30
32		2.5	3.9	5.1	2.4	4.0	4.8	2.6	4.3	4.5	3.0	4.1	3.6	3.6	32
34		1.7	3.2	4.3	1.7	3.4	4.2	1.9	3.6	3.8	2.3	3.4	2.8	2.9	34
36						2.8	3.5		2.9	3.1	1.7	2.7	2.2	2.2	36
38						2.3	3.0		2.4	2.6		2.2	1.6	1.7	38
40									1.9	2.1		1.7			40
42										1.6					42
组合	00122	21111	11112	00222	22111	11122	01222	22211	11222	02222	22221	12222	22222	33333	组合

# 起重性能表

## Lifting capacities

T 13.2~62m



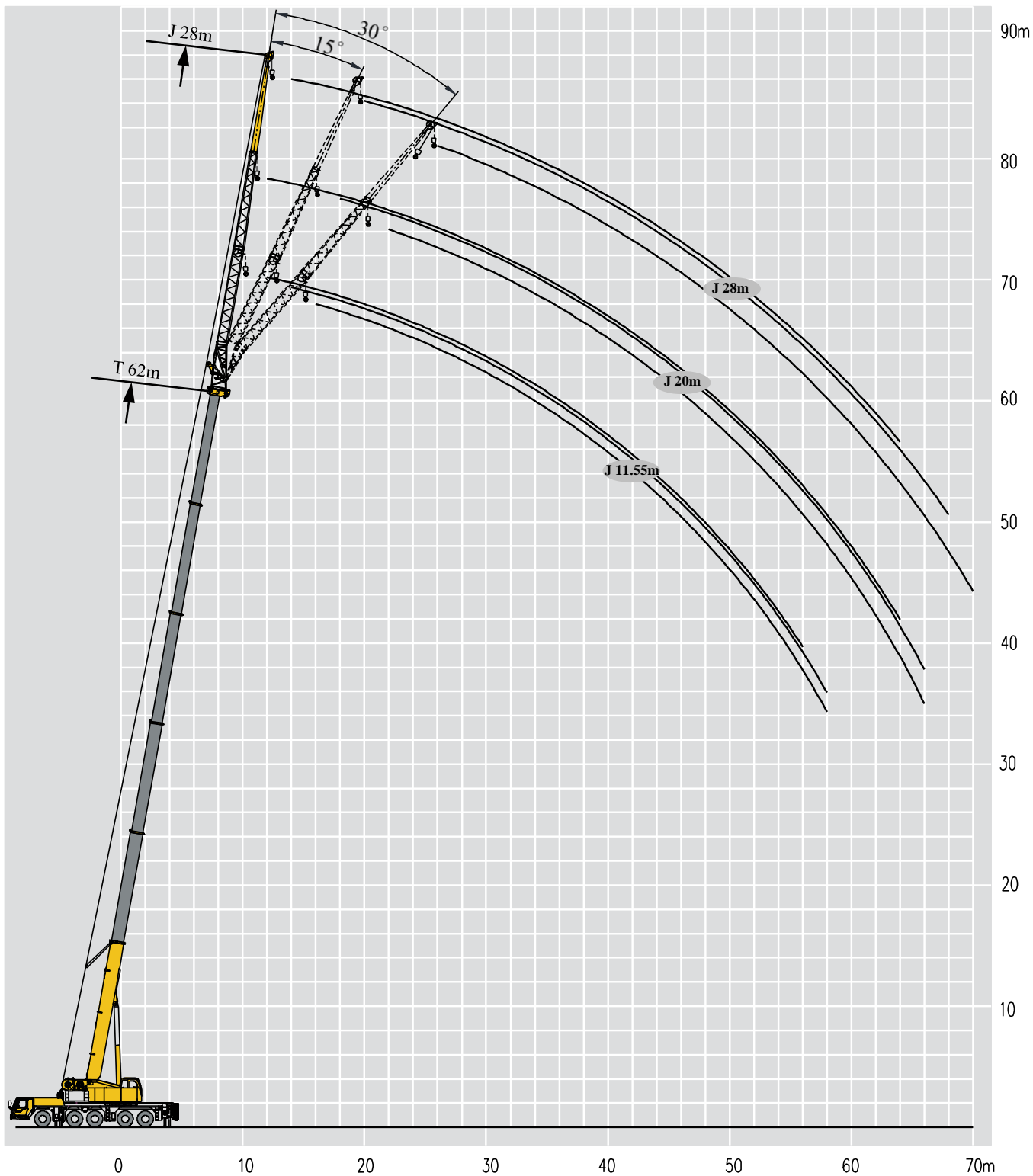
m	Lifting Capacity (t)														m
	13.2m	17.7m	17.7m	22.2m	22.2m	22.2m	26.7m	26.7m	26.7m	31.2m	31.2m	31.2m	35.7m	35.7m	
3	122.0														3
3.5	111.0	106.0	65.0												3.5
4	103.0	98.0	63.1	94.0	94.0	46.1									4
4.5	95.0	91.0	60.5	87.0	87.0	42.8	83.0	82.0	45.9						4.5
5	88.0	83.0	57.9	79.0	79.0	40.3	76.0	75.0	44.0	73.0	69.9	40.0			5
6	66.8	65.8	52.7	64.5	65.6	35.8	64.0	63.0	38.3	62.0	61.0	37.2	55.6	53.8	6
7	49.2	48.5	48.4	47.4	48.3	31.6	47.9	46.5	33.7	48.9	47.2	34.3	47.9	43.8	7
8	38.2	37.7	38.6	36.7	37.6	28.5	37.3	36.0	30.9	38.2	36.7	29.9	39.2	37.5	8
9	30.8	30.4	31.4	29.5	30.3	26.3	30.1	28.9	28.3	31.0	29.5	27.4	30.9	29.3	9
10	25.4	25.1	26.2	24.3	25.0	23.4	24.8	23.7	26.2	23.7	22.3	26.7	25.6	24.1	10
12		18.0	19.2	17.2	17.9	20.3	17.8	16.7	20.5	18.6	17.3	20.8	19.4	18.0	12
14		13.3	14.7	12.6	13.3	15.6	13.2	12.2	16.0	14.0	12.8	16.3	14.8	13.5	14
16				9.4	10.0	12.5	10.0	8.9	12.9	10.8	9.6	13.2	11.6	10.3	16
18				6.9	7.4	10.2	7.7	6.3	10.6	8.5	7.1	10.8	9.2	8.0	18
20							5.7	4.3	8.7	6.6	5.0	9.0	7.4	6.0	20
22							4.1	2.7	7.3	5.0	3.4	7.6	6.0	4.4	22
24										3.7	2.1	6.4	4.7	3.0	24
26										2.6		5.4	3.6	2.0	26
28													2.7		28
30													1.9		30
组合	00000	01000	00001	11000	02000	00002	11100	21000	00012	11110	21100	00022	11111	21110	组合

m	Lifting Capacity (t)														m
	35.7m	40.1m	40.1m	40.1m	44.6m	44.6m	44.6m	49.1m	49.1m	49.1m	53.6m	53.6m	58.1m	62m	
6	34.1														6
7	30.3	42.3	37.3	25.1											7
8	25.7	37.4	35.5	23.5	35.8	30.5	26.0								8
9	24.5	30.2	30.6	21.1	30.0	26.4	22.4	29.4	21.0	20.4					9
10	22.7	24.9	25.2	20.0	24.7	24.8	21.0	24.2	19.9	19.5	23.8	19.1			10
12	20.7	18.9	20.1	17.1	18.7	20.0	18.5	17.3	16.8	16.5	17.3	16.5	17.8	15.4	12
14	16.8	14.3	15.5	14.7	14.2	15.4	16.3	14.2	15.7	15.9	14.4	15.2	14.8	14.4	14
16	13.5	11.1	12.2	13.4	11.0	12.2	13.1	11.1	12.5	12.7	11.3	12.1	11.7	11.6	16
18	11.1	8.8	9.9	11.0	8.7	9.8	10.7	8.8	10.1	10.4	9.0	9.8	9.4	9.4	18
20	9.3	6.9	8.0	9.2	6.9	8.0	8.9	7.0	8.3	8.6	7.2	8.0	7.6	7.6	20
22	7.8	5.3	6.6	7.7	5.3	6.6	7.4	5.5	6.9	7.1	5.8	6.6	6.2	6.2	22
24	6.6	4.0	5.4	6.5	3.9	5.4	6.2	4.2	5.7	5.9	4.6	5.4	5.1	5.1	24
26	5.6	2.9	4.4	5.5	2.8	4.4	5.2	3.1	4.7	5.0	3.5	4.5	4.0	4.0	26
28	4.8	2.0	3.4	4.6	1.9	3.6	4.4	2.2	3.8	4.0	2.6	3.6	3.1	3.1	28
30	4.0		2.6	3.8		2.9	3.6		3.0	3.2	1.8	2.8	2.3	2.3	30
32			1.9	3.1		2.3	2.9		2.4	2.5		2.2	1.6	1.6	32
34				2.5		1.7	2.3		1.8	1.9		1.6			34
组合	00122	21111	11112	00222	22111	11122	01222	22211	11222	02222	22221	12222	22222	33333	组合



# 起升高度曲线图 Lifting heights

副臂  
Jib



# 起重性能表

## Lifting capacities


T 44.6~62m

m	44.6m		49.1m				53.6m			58.1m			62m			m	
	11.55m		11.55m				11.55m			11.55m			11.55m				
	0°	15°	30°	0°	15°	30°	0°	15°	30°	0°	15°	30°	0°	15°	30°		
	T		J		8.9m×8.3m		360°		64t								
10	11.0															10	
12	10.5	8.6		10.0												12	
14	10.2	8.0	6.2	9.8	7.5		9.5			7.5						14	
16	9.8	7.3	6.0	9.5	7.0	6.1	9.0	6.9		7.3	6.8		6.8			16	
18	9.5	6.8	5.7	9.2	6.6	5.8	8.7	6.7	5.7	7.0	6.5	5.6	6.5	6.3		18	
20	9.1	6.3	5.5	8.8	6.2	5.6	8.3	6.3	5.5	6.8	6.1	5.5	6.3	6.0	5.1	20	
22	8.7	5.9	5.2	8.5	5.8	5.3	8.0	6.0	5.3	6.5	5.7	5.3	6.0	5.7	5.0	22	
24	7.8	5.6	5.0	8.0	5.6	5.1	7.7	5.7	5.2	6.1	5.3	5.1	5.7	5.3	4.8	24	
26	7.2	5.3	4.7	7.5	5.4	4.9	7.3	5.3	5.0	5.8	5.1	5.0	5.4	5.1	4.6	26	
28	6.9	5.1	4.5	7.2	5.2	4.7	6.9	5.1	4.7	5.5	4.8	4.7	5.2	4.7	4.3	28	
30	6.6	4.9	4.4	6.8	5.0	4.5	6.2	4.8	4.4	5.3	4.6	4.5	5.0	4.5	4.2	30	
32	6.4	4.7	4.3	6.4	4.8	4.3	5.7	4.3	4.2	5.1	4.3	4.4	4.6	4.3	4.1	32	
34	6.2	4.5	4.2	5.8	4.6	4.2	5.1	4.1	4.0	4.7	4.1	4.2	4.1	4.0	4.0	34	
36	6.0	4.3	4.0	5.2	4.5	4.1	4.6	3.9	3.9	4.2	3.8	4.0	3.7	3.7	3.8	36	
38	5.8	4.1	3.9	4.7	4.3	4.0	4.1	3.8	3.8	3.8	3.6	3.9	3.3	3.4	3.4	38	
40	5.2	3.9	3.8	4.3	4.0	3.9	3.7	3.6	3.8	3.5	3.5	3.6	3.0	3.1	3.1	40	
42	4.8	3.8	3.7	3.9	3.7	3.8	3.4	3.4	3.5	3.1	3.2	3.2	2.7	2.8	2.8	42	
44	4.4	3.6	3.6	3.5	3.3	3.6	3.1	3.1	3.2	2.9	2.9	2.9	2.3	2.5	2.5	44	
46	4.1	3.5	2.8	3.2	3.0	3.4	2.7	2.9	2.9	2.6	2.6	2.7	2.1	2.2	2.2	46	
48			2.3	2.9	2.7	3.0	2.5	2.6	2.6	2.3	2.4	2.4	1.9	2.0	2.0	48	
50				2.5	2.2	2.6	2.2	2.3	2.3	2.0	2.1	2.2	1.7	1.7	1.8	50	
52						2.4	2.0	2.1	2.1	1.9	1.9	2.0	1.4	1.5	1.6	52	
54							1.8	1.8	1.9	1.7	1.7	1.7	1.3	1.3	1.4	54	
56										1.5	1.5	1.5	1.1	1.2	1.2	56	
58										1.3	1.4	1.4	0.9	1.0	1.0	58	
组合	22111/11122			22211/11222				22221/12222			22222			33333			组合

# 起重性能表

## Lifting capacities

T 44.6~62m




m	44.6m			49.1m			53.6m			58.1m			62m			m
	20m			20m			20m			20m			20m			
	0°	15°	30°	0°	15°	30°	0°	15°	30°	0°	15°	30°	0°	15°	30°	
12	6.0			5.8												12
14	5.9			5.6			5.4									14
16	5.8	4.3		5.3			5.2			4.8			4.5			16
18	5.5	4.3		5.0	3.9		4.9	3.7		4.8			4.5			18
20	5.2	4.0	3.1	4.8	3.7	3.1	4.7	3.6		4.8	3.3		4.3	3.0		20
22	5.0	3.8	3.0	4.5	3.5	2.9	4.5	3.4	2.8	4.6	3.0	2.9	4.0	2.8		22
24	4.7	3.5	2.9	4.3	3.3	2.8	4.3	3.2	2.7	4.1	2.9	2.7	3.9	2.7	2.5	24
26	4.3	3.3	2.8	4.1	3.1	2.8	4.1	3.1	2.7	4.0	2.8	2.6	3.7	2.6	2.4	26
28	4.0	3.0	2.8	4.0	2.9	2.8	3.9	2.9	2.7	3.8	2.7	2.5	3.5	2.5	2.4	28
30	3.8	2.9	2.7	3.8	2.7	2.7	3.8	2.6	2.6	3.7	2.6	2.5	3.4	2.4	2.3	30
32	3.7	2.7	2.7	3.8	2.6	2.7	3.6	2.5	2.6	3.5	2.5	2.5	3.3	2.3	2.3	32
34	3.5	2.6	2.6	3.6	2.5	2.6	3.5	2.4	2.5	3.4	2.4	2.4	3.2	2.2	2.2	34
36	3.4	2.5	2.6	3.4	2.4	2.6	3.4	2.3	2.3	3.3	2.3	2.4	3.1	2.2	2.1	36
38	3.3	2.4	2.5	3.2	2.3	2.5	3.3	2.2	2.2	3.0	2.2	2.3	3.0	2.1	2.1	38
40	3.1	2.4	2.5	3.1	2.2	2.5	3.1	2.2	2.2	2.8	2.1	2.3	2.8	2.0	2.0	40
42	2.9	2.3	2.4	2.9	2.1	2.5	3.0	2.1	2.2	2.7	2.1	2.2	2.4	2.0	2.0	42
44	2.8	2.2	2.4	2.8	2.1	2.4	2.8	2.1	2.1	2.6	2.0	2.1	2.1	1.9	1.9	44
46	2.6	2.1	2.4	2.6	2.0	2.3	2.7	2.0	2.1	2.4	2.0	2.1	1.9	1.8	1.9	46
48	2.5	2.1	2.3	2.5	2.0	2.3	2.4	2.0	1.8	2.1	1.9	1.7	1.7	1.8	1.7	48
50	2.3	2.0	2.2	2.4	1.9	2.2	2.1	1.9	1.8	1.9	1.9	1.7	1.5	1.6	1.6	50
52	2.3	2.0	2.2	2.3	1.9	2.1	1.9	1.9	1.8	1.7	1.8	1.6	1.3	1.5	1.5	52
54	2.3	2.0	2.0	2.0	1.7	2.0	1.7	1.8	1.7	1.5	1.6	1.5	1.1	1.2	1.3	54
56		2.0	1.8	1.8	1.6	1.8	1.5	1.6	1.6	1.3	1.4	1.5	1.0	1.1	1.2	56
58					1.6	1.7	1.3	1.4	1.5	1.1	1.2	1.3	0.8	0.9	1.0	58
60							1.1	1.1	1.3	1.0	1.1	1.2				60
62								1.0	1.1	0.9	1.0	1.0				62
组合	22111/11122			22211/11222			22221/12222			22222			33333			组合

# 起重性能表

## Lifting capacities

T 44.6~62m




m	44.6m			49.1m			53.6m			58.1m			62m			m
	28m			28m			28m			28m			28m			
	0°	15°	30°	0°	15°	30°	0°	15°	30°	0°	15°	30°	0°	15°	30°	
14	3.8			3.7												14
16	3.6			3.5			3.5			3.3						16
18	3.4			3.3			3.3			3.2			2.9			18
20	3.2	2.5		3.2			3.2			3.1			2.9			20
22	3.0	2.4		3.1	2.4		3.1	2.4		3.1			2.8			22
24	2.8	2.3		2.9	2.3		2.8	2.3		2.8	2.3		2.7	2.3		24
26	2.7	2.2	1.9	2.8	2.2		2.7	2.2		2.7	2.3		2.6	2.2		26
28	2.6	2.1	1.8	2.7	2.2	1.8	2.6	2.1	1.8	2.6	2.2		2.5	2.2		28
30	2.5	2.0	1.8	2.6	2.1	1.8	2.5	2.1	1.8	2.5	2.1	1.6	2.4	2.1	1.6	30
32	2.4	2.0	1.7	2.5	2.0	1.7	2.5	2.0	1.7	2.4	2.1	1.6	2.3	2.1	1.5	32
34	2.3	1.9	1.6	2.4	2.0	1.7	2.4	2.0	1.7	2.3	2.0	1.5	2.3	2.0	1.5	34
36	2.2	1.9	1.6	2.3	1.9	1.6	2.3	1.9	1.7	2.3	1.9	1.5	2.2	1.9	1.5	36
38	2.1	1.8	1.6	2.2	1.8	1.6	2.3	1.8	1.6	2.2	1.9	1.5	2.1	1.9	1.4	38
40	2.0	1.8	1.6	2.1	1.8	1.6	2.2	1.8	1.6	2.2	1.8	1.4	2.0	1.8	1.4	40
42	2.0	1.7	1.5	2.0	1.7	1.5	2.1	1.7	1.5	2.1	1.8	1.4	2.0	1.8	1.3	42
44	2.0	1.7	1.5	1.9	1.7	1.5	2.0	1.7	1.5	2.0	1.7	1.3	1.9	1.7	1.3	44
46	1.9	1.6	1.5	1.9	1.6	1.5	1.9	1.6	1.4	1.9	1.6	1.3	1.7	1.6	1.3	46
48	1.8	1.6	1.4	1.8	1.6	1.4	1.8	1.6	1.4	1.8	1.6	1.3	1.4	1.6	1.2	48
50	1.7	1.5	1.4	1.7	1.6	1.4	1.7	1.6	1.4	1.7	1.6	1.2	1.3	1.5	1.2	50
52	1.7	1.5	1.3	1.7	1.5	1.4	1.6	1.5	1.4	1.4	1.6	1.2	1.1	1.3	1.2	52
54	1.6	1.5	1.3	1.6	1.5	1.4	1.5	1.5	1.3	1.3	1.4	1.2	0.9	1.1	1.1	54
56	1.6	1.4	1.3	1.6	1.5	1.4	1.3	1.4	1.2	1.1	1.3	1.2	0.8	0.9	1.1	56
58	1.5	1.4	1.3	1.5	1.4	1.3	1.2	1.3	1.2	0.9	1.1	1.2				58
60		1.4	1.2	1.3	1.4	1.3	1.0	1.1	1.2							60
62				1.1	1.3	1.3		1.0	1.1							62
组合	22111/11122			22211/11222			22221/12222			22222			33333			组合

# 起重性能表

## Lifting capacities

T 44.6~62m




m	44.6m			49.1m			53.6m			58.1m			62m			m
	11.55m			11.55m			11.55m			11.55m			11.55m			
	0°	15°	30°	0°	15°	30°	0°	15°	30°	0°	15°	30°	0°	15°	30°	
10	11.0															10
12	10.5	8.6		10.0												12
14	10.2	8.0	6.2	9.8	7.5		9.5			7.5						14
16	9.8	7.3	6.0	9.5	7.0	6.1	9.0	6.9		7.3	6.8		6.8			16
18	9.5	6.8	5.7	9.2	6.6	5.8	8.7	6.7	5.7	7.0	6.5	5.6	6.5	6.3		18
20	9.1	6.3	5.5	8.8	6.2	5.6	8.3	6.3	5.5	6.8	6.1	5.5	6.3	6.0	5.1	20
22	8.7	5.9	5.2	8.5	5.8	5.3	8.0	6.0	5.3	6.5	5.7	5.3	6.0	5.7	5.0	22
24	7.8	5.6	5.0	8.0	5.6	5.1	7.7	5.7	5.2	6.1	5.3	5.1	5.7	5.3	4.8	24
26	7.2	5.3	4.7	7.5	5.4	4.9	7.3	5.3	5.0	5.8	5.1	5.0	5.4	5.1	4.6	26
28	6.9	5.1	4.5	7.2	5.2	4.7	6.9	5.1	4.7	5.5	4.8	4.7	5.2	4.7	4.3	28
30	6.6	4.9	4.4	6.8	5.0	4.5	6.2	4.8	4.4	5.3	4.6	4.5	5.0	4.5	4.2	30
32	6.4	4.7	4.3	6.4	4.8	4.3	5.7	4.3	4.2	5.1	4.3	4.4	4.6	4.3	4.1	32
34	6.2	4.5	4.2	5.8	4.6	4.2	5.1	4.1	4.0	4.7	4.1	4.2	4.1	4.0	4.0	34
36	5.8	4.3	4.0	5.2	4.5	4.1	4.6	3.9	3.9	4.2	3.8	4.0	3.7	3.7	3.8	36
38	5.0	4.1	3.9	4.7	4.3	4.0	4.1	3.8	3.8	3.8	3.6	3.9	3.3	3.4	3.4	38
40	4.3	3.9	3.8	4.3	4.0	3.9	3.7	3.6	3.8	3.5	3.5	3.6	3.0	3.1	3.1	40
42	3.7	3.8	3.7	3.7	3.7	3.8	3.4	3.4	3.5	3.1	3.2	3.2	2.7	2.8	2.8	42
44	3.1	3.3	3.4	3.1	3.3	3.5	3.1	3.1	3.2	2.9	2.9	2.9	2.3	2.5	2.5	44
46	2.6	2.8	2.8	2.6	2.8	2.9	2.7	2.9	2.9	2.6	2.6	2.7	2.1	2.2	2.2	46
48			2.3	2.1	2.3	2.4	2.3	2.5	2.6	2.3	2.4	2.4	1.9	2.0	2.0	48
50				1.7	1.9	1.9	1.9	2.0	2.1	2.0	2.1	2.2	1.7	1.7	1.8	50
52						1.5	1.5	1.6	1.7	1.7	1.9	2.0	1.4	1.5	1.6	52
54							1.1	1.3	1.3	1.4	1.5	1.6	1.3	1.3	1.4	54
56										1.1	1.2	1.3	1.0	1.2	1.2	56
组合	22111/11122			22211/11222			22221/12222			22222			33333			组合



# 起重性能表

## Lifting capacities

T 44.6~62m



m	44.6m			49.1m			53.6m			58.1m			62m			m
	20m			20m			20m			20m			20m			
	0°	15°	30°	0°	15°	30°	0°	15°	30°	0°	15°	30°	0°	15°	30°	
12	6.0			5.8												12
14	5.9			5.6			5.4									14
16	5.8	4.3		5.3			5.2			4.8			4.5			16
18	5.5	4.3		5.0	3.9		4.9	3.7		4.8			4.5			18
20	5.2	4.0	3.1	4.8	3.7	3.1	4.7	3.6		4.8	3.3		4.3	3.0		20
22	5.0	3.8	3.0	4.5	3.5	2.9	4.5	3.4	2.8	4.6	3.0	2.9	4.0	2.8		22
24	4.7	3.5	2.9	4.3	3.3	2.8	4.3	3.2	2.7	4.1	2.9	2.7	3.9	2.7	2.5	24
26	4.3	3.3	2.8	4.1	3.1	2.8	4.1	3.1	2.7	4.0	2.8	2.6	3.7	2.6	2.4	26
28	4.0	3.0	2.8	4.0	2.9	2.8	3.9	2.9	2.7	3.8	2.7	2.5	3.5	2.5	2.4	28
30	3.8	2.9	2.7	3.8	2.7	2.7	3.8	2.6	2.6	3.7	2.6	2.5	3.4	2.4	2.3	30
32	3.7	2.7	2.7	3.8	2.6	2.7	3.6	2.5	2.6	3.5	2.5	2.5	3.3	2.3	2.3	32
34	3.5	2.6	2.6	3.6	2.5	2.6	3.5	2.4	2.5	3.4	2.4	2.4	3.2	2.2	2.2	34
36	3.4	2.5	2.6	3.4	2.4	2.6	3.4	2.3	2.3	3.3	2.3	2.4	3.1	2.2	2.1	36
38	3.3	2.4	2.5	3.2	2.3	2.5	3.3	2.2	2.2	3.0	2.2	2.3	3.0	2.1	2.1	38
40	3.1	2.4	2.5	3.1	2.2	2.5	3.1	2.2	2.2	2.8	2.1	2.3	2.8	2.0	2.0	40
42	2.9	2.3	2.4	2.9	2.1	2.5	3.0	2.1	2.2	2.7	2.1	2.2	2.4	2.0	2.0	42
44	2.8	2.2	2.4	2.8	2.1	2.4	2.8	2.1	2.1	2.6	2.0	2.1	2.1	1.9	1.9	44
46	2.6	2.1	2.4	2.6	2.0	2.3	2.7	2.0	2.1	2.4	2.0	2.1	1.9	1.8	1.9	46
48	2.5	2.1	2.3	2.5	2.0	2.3	2.4	2.0	1.8	2.1	1.9	1.7	1.7	1.8	1.7	48
50	2.3	2.0	2.2	2.3	1.9	2.2	2.1	1.9	1.8	1.9	1.9	1.7	1.5	1.6	1.6	50
52	2.0	2.0	2.2	1.9	1.9	2.1	1.9	1.9	1.8	1.7	1.8	1.6	1.3	1.5	1.5	52
54	1.7	1.9	2.0	1.6	1.7	2.0	1.6	1.8	1.7	1.5	1.6	1.5	1.1	1.2	1.3	54
56		1.5	1.6	1.2	1.5	1.6	1.3	1.6	1.6	1.3	1.4	1.5	1.0	1.1	1.2	56
58					1.2	1.3	1.0	1.3	1.4	1.1	1.2	1.3	0.8	0.9	1.0	58
60									1.1	1.0	1.1	1.2				60
62											1.0	1.0				62
组合	22111/11122			22211/11222			22221/12222			22222			33333			组合

# 起重性能表

## Lifting capacities

T 44.6~62m



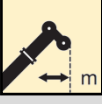





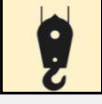

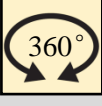



m	44.6m			49.1m			53.6m			58.1m			62m			m
	28m			28m			28m			28m			28m			
	0°	15°	30°	0°	15°	30°	0°	15°	30°	0°	15°	30°	0°	15°	30°	
14	3.8			3.7												14
16	3.6			3.5			3.5			3.3						16
18	3.4			3.3			3.3			3.2			2.9			18
20	3.2	2.5		3.2			3.2			3.1			2.9			20
22	3.0	2.4		3.1	2.4		3.1	2.4		3.1			2.8			22
24	2.8	2.3		2.9	2.3		2.8	2.3		2.8	2.3		2.7	2.3		24
26	2.7	2.2	1.9	2.8	2.2		2.7	2.2		2.7	2.3		2.6	2.2		26
28	2.6	2.1	1.8	2.7	2.2	1.8	2.6	2.1	1.8	2.6	2.2		2.5	2.2		28
30	2.5	2.0	1.8	2.6	2.1	1.8	2.5	2.1	1.8	2.5	2.1	1.6	2.4	2.1	1.6	30
32	2.4	2.0	1.7	2.5	2.0	1.7	2.5	2.0	1.7	2.4	2.1	1.6	2.3	2.1	1.5	32
34	2.3	1.9	1.6	2.4	2.0	1.7	2.4	2.0	1.7	2.3	2.0	1.5	2.3	2.0	1.5	34
36	2.2	1.9	1.6	2.3	1.9	1.6	2.3	1.9	1.7	2.3	1.9	1.5	2.2	1.9	1.5	36
38	2.1	1.8	1.6	2.2	1.8	1.6	2.3	1.8	1.6	2.2	1.9	1.5	2.1	1.9	1.4	38
40	2.0	1.8	1.6	2.1	1.8	1.6	2.2	1.8	1.6	2.2	1.8	1.4	2.0	1.8	1.4	40
42	2.0	1.7	1.5	2.0	1.7	1.5	2.1	1.7	1.5	2.1	1.8	1.4	2.0	1.8	1.3	42
44	2.0	1.7	1.5	1.9	1.7	1.5	2.0	1.7	1.5	2.0	1.7	1.3	1.9	1.7	1.3	44
46	1.9	1.6	1.5	1.9	1.6	1.5	1.9	1.6	1.4	1.9	1.6	1.3	1.7	1.6	1.3	46
48	1.8	1.6	1.4	1.8	1.6	1.4	1.8	1.6	1.4	1.8	1.6	1.3	1.4	1.6	1.2	48
50	1.7	1.5	1.4	1.7	1.6	1.4	1.7	1.6	1.4	1.7	1.6	1.2	1.3	1.5	1.2	50
52	1.7	1.5	1.3	1.7	1.5	1.4	1.6	1.5	1.4	1.4	1.6	1.2	1.1	1.3	1.2	52
54	1.6	1.5	1.3	1.6	1.5	1.4	1.5	1.5	1.3	1.3	1.4	1.2	0.9	1.1	1.1	54
56	1.6	1.4	1.3	1.5	1.5	1.4	1.3	1.4	1.2	1.1	1.3	1.2	0.8	0.9	1.1	56
58	1.3	1.4	1.3	1.2	1.4	1.3	1.2	1.3	1.2	0.9	1.1	1.2				58
60		1.3	1.2		1.3	1.3		1.1	1.2							60
62					1.0	1.2		1.0	1.1							62
组合	22111/11122			22211/11222			22221/12222			22222			33333			组合

# 符号标识

## Description of symbols



### 常规标识

#### General symbols

	支腿 Outriggers		车桥 Axle
	工作幅度 Radius		行驶速度 Driving speed
	吊臂仰角 Boom position		爬坡能力 Gradability
	吊臂长度 Boom length		轮胎 Tyres
	吊钩 Hook block		平衡重 Counterweight
	360°全回转 360° rotation		上车 superstructure
	卷扬 Winch		底盘 Chassis

### 起重作业标识

#### Crane specific symbols

	主臂 Boom		副臂 Jib
--	------------	---	-----------

## 注意事项

### Notes

1. 表中额定总起重量值，是在平整的坚固地面上本起重机能够保证的最大总起重量，包括吊钩和吊具的重量，所以为了估算重物重量，必须减去上述的装置重量。
2. 表中的工作幅度为起吊重物离地时起重物到起重机回转轴线的水平距离，是包括起重臂变形量在内的实际值，因而起吊前应考虑起重臂变形量。
3. 只允许在5级(风速14.1m/s，风压125N/m<sup>2</sup>)风以下进行作业。
4. 吊重前操作者必须对物体的重量和工作范围了解后选择合适的作业工况，严禁超出表中的数值。幅度及臂长在相邻两个数值之间时，应依据两个数值中较小值确定起重作业。
5. 应按主臂仰角范围作业，即使是空载，也不应使主臂仰角处于范围外，谨防整机倾翻。
6. 表中的主臂长度应要按照每节臂的伸缩要求进行伸出。

1. The total rated loads given in the rated load charts are the maximum lifting capacity when the crane is set up on firm and level ground, which includes the weight of the hook block and slings. The weight of above-mentioned devices should be deducted to correctly calculate the load weight.
2. The working radius shown in the rated load charts is the radius when the load is lifted off the ground, and it is the actual value including loaded boom deflection.
3. A lifting operation is permissible only when the wind force is below grade 5 (instantaneous wind speed is 14.1 m/s, wind pressure is 125 N/m<sup>2</sup>).
4. Before beginning lifting operation, the operator should know the weight of the load to be lifted and its working range, and then select proper working conditions. Never operate the crane beyond the limit shown in the chart. Use the lower value from the chart when the boom length or working radius is between the range of values.
5. Observe the boom angle limit. Never operate the crane with the boom angle beyond the recommended limit even if a load is not being carried. Otherwise, the crane will tip.
6. The boom length given in the rated load charts should accord with the telescoping code of boom sections .



地址：中国江苏徐州市铜山路165号

Add : No.165 Tongshan Road Xuzhou Jiangsu China

电话(Tel) : +86-516-83462242/83462350

质量监督电话(Quality Inquiry Tel) : +86-516-87888268

备件电话(Spare Parts Tel) : +86-516-83461542

邮编(Post Code) : 221004

网址(Web) : [www.xcmg.com/qizhongji](http://www.xcmg.com/qizhongji)

**服务热线 Service Tel**

**400-110-9999**

**400-001-5678**



本印刷品不属于合同。出于产品不断改进的需要，我们保留对产品型号、参数、配置进行变更的权利，恕不另行通知。图片仅供参考，具体产品以实物为准。图片中产品可能并非标准配置，部分部件可能需要另行购置。办理牌照和上路行驶需遵守当地法规。

This print does not belong to the contract. We reserve the right to modify the design (such as product model, parameters and configuration) without notice for improvement. The pictures are just for reference. The product in the picture may not be standard configuration. Some parts need to be purchased separately. Conform to the local laws for license application and road traveling.