



文件号:

# QAY260A全地面起重机 技术规格书

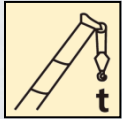
					编制		
					校对		
					审核		
					会签		
					批准		
标记	处数	更改文件号	签字	日期	审签	签字	日期

**徐州重型机械有限公司**

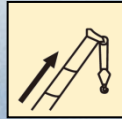
# QAY260A 全地面起重机 / All Terrain Crane

## 技术规格书

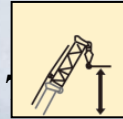
Basic technical specification



260 t



72 m



100 m

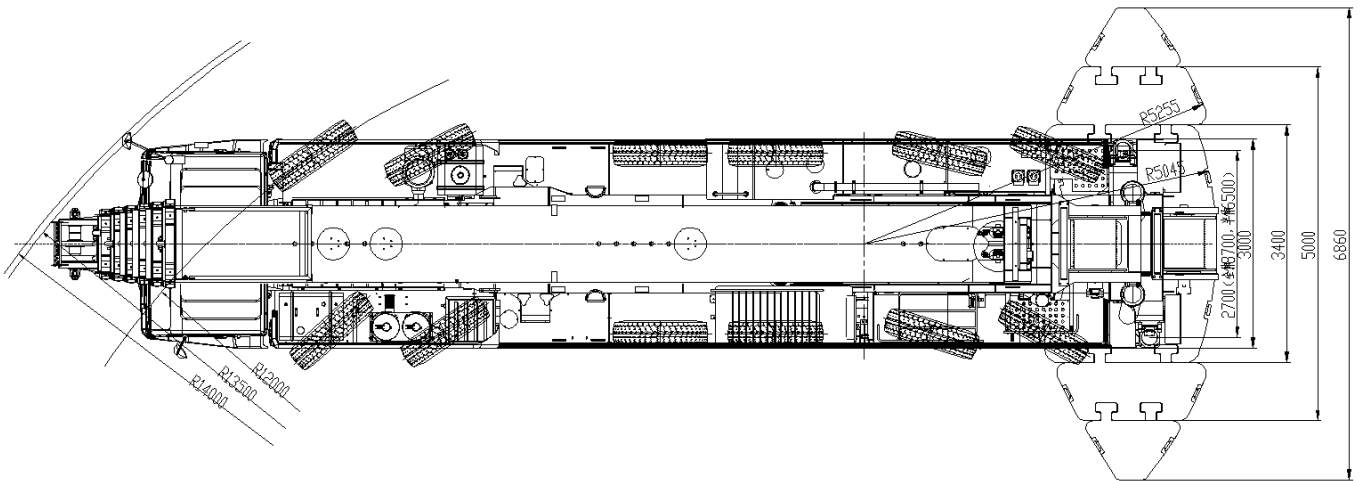
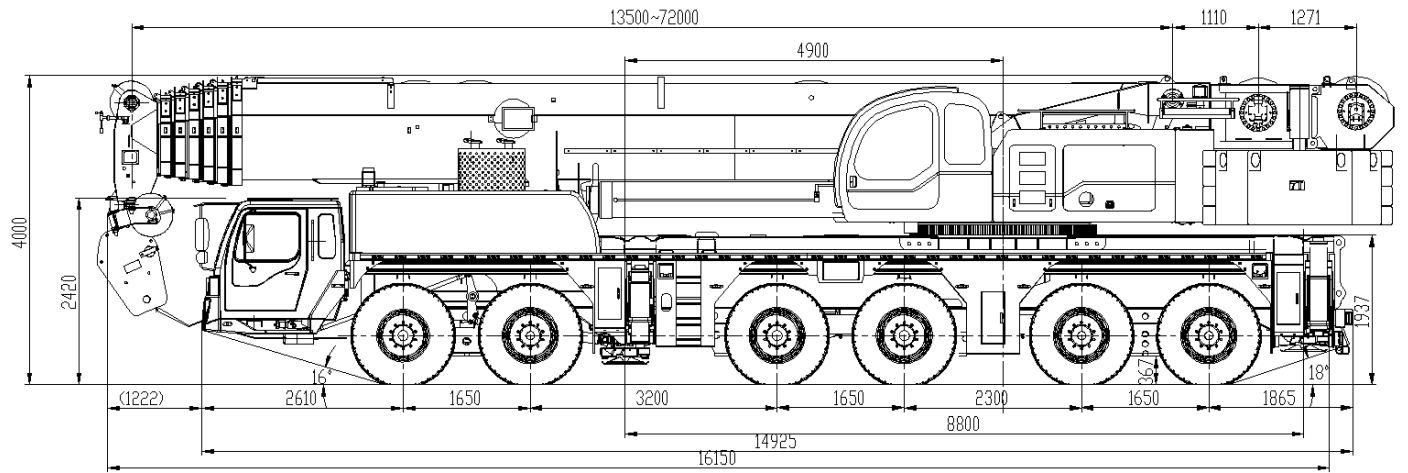


# 目录

## Contents

<b>目录</b>	
<b>Contents</b>	
尺寸参数	3
Dimensions	
技术规格	4-7
Technical Specifications	
重量/作业速度	8
Weight / Working speeds	
平衡重	9
Counterweight	
运输部件尺寸	10
Transportation components dimension	
臂架组合方案	11-12
Boom / Jib combinations	
主臂	13-23
Boom	
副臂	24-28
Jib	
独立臂头	29-30
Independent jib head	
符号标识	31
Symbol glossary	
注意事项	32
Notes	

# 尺寸参数 Dimensions



385/95 R 25  
( 14.00 R 25 )

最小离地高度H

280mm

## 技术规格

### Technical specifications



#### 底盘

<b>车架</b>	徐工设计、制造，全覆盖式走台板，防扭转箱型结构，高强度钢材制造。
<b>支腿</b>	4支腿，H形布置，采用双级水平支腿，水平伸缩和垂直伸缩由液压控制，底盘两侧装有电控操纵控制台，控制台板装有水平仪、照明灯和增速按钮，支腿油缸均设有单向阀，且垂直支腿带有双向液压锁。
<b>发动机</b>	OM502LA.E3A/1，V形八缸水冷电喷柴油发动机，戴姆勒制造，最大净功率480kW/1800rpm，最大扭矩2800Nm/1080rpm，国III排放标准。 燃油箱容积：450L。
<b>液压系统</b>	定量开式系统，定量齿轮泵通过取力器联接至发动机，用于控制支腿、转向。
<b>变速箱</b>	德国ZF手、自一体电控变速箱，16个前进档，2个倒档，带缓速制动。
<b>分动箱</b>	德国KESSLER机械式分动箱，装有应急转向油泵。
<b>车桥</b>	德国KESSLER高强度车桥，配备气控鼓式制动器，12×8驱动。
<b>悬挂</b>	所有车桥均采用油气悬挂系统，减震效果好，具有自动调平、悬架升降、弹性刚性转换等功能。
<b>轮胎</b>	12个轮胎，1个备胎，每桥均装单胎，双钱制造，承载力大。 轮胎规格：385/95R25（14.00R25）
<b>制动</b>	行车制动：双回路气压制动，作用于所有车轮。 驻车制动：弹簧贮能制动，作用于2-6轴车轮。

辅助制动：发动机排气制动和缓速制动，安全可靠，延长制动器使用寿命。

#### 转向

1、2、5、6轴机械转向液压助力，简单可靠。

#### 驾驶室

新型钢结构豪华全宽驾驶室，可调式座椅，采用悬浮式连接结构，后部装有减震器。配备电动升降器的安全玻璃、电动调节后视镜、可调节高度及角度方向盘，大屏幕彩色液晶显示器和CD音响等。新型组合式中控台布局安全合理，采用圆弧造型，体现人性化的设计。  
标配单冷空调。

#### 电气系统

直流24伏特，2个的电池组串联。



#### 上车

徐工设计、制造，高强度钢材制造。

**上车发动机** OM906LA.E2/3，直列六缸水冷电喷柴油发动机，戴姆勒制造，最大净功率180kW/2200rpm，最大扭矩900Nm/1500rpm，非道路国II排放标准。  
燃油箱容积：320L。

#### 液压系统

上车发动机驱动变量泵，用于起升、变幅、伸缩。采用进口电液换向阀，与变量柱塞泵进行良好的匹配，启停平稳，风冷式液压油冷却器，有效降低系统油温。

#### 操纵方式

无级调速，先导电比例操纵，由左右2个操纵手柄控制起重机的全部动作。

## 技术规格

### Technical specifications

**主起升机构** 双折线绳槽卷筒，由液压马达驱动，内置行星齿轮减速器和常闭式制动器，并带有平衡阀。  
高强度钢丝绳，钢丝绳端带绳头，直接安装于索套内，提高了更换速度，方便快捷。

**回转机构** 三排滚柱外齿式回转支承，双回转机构，液压马达驱动，内置行星齿轮减速器和常闭式制动器，具有动力控制或自由滑转的功能，可无级调速。

**操纵室** 带大圆弧玻璃，外开式门，可翻仰21°，装有安全玻璃和顶部保护栏，配备力矩限制器、电控箱、风扇、电动前窗刮水器、发动机动力加速踏板、发动机起动开关，标配单冷空调等。

**安全装置** 液压平衡阀、液压溢流阀、液压双向锁、力矩限制器；三圈保护器，防止钢丝绳过放；臂头设置高度限位，防止钢丝绳过卷；风速仪，检测高空风速。

**力矩限制器** 当实际力矩接近过载时，发出听视觉警报，并在过载之前自动停止危险动作。具有超载记忆功能（黑匣子）和故障自诊断功能。

**组合配重** 总重85t，有25t、37t、49t、71t和85t五种组合方式。

**电气系统** 直流24伏特，2个电池串联。



#### 臂架系统

**主臂** 1节基本臂和6节伸缩臂，椭圆形截面的筒形焊接结构，单缸插销伸缩机构，1个装有安全阀的伸缩油缸，多种伸缩模式可供选择。

主臂长度：13.5m ~ 72m。

**副臂** 2节，桁架式和箱型焊接结构，有0°、15°和30°三种固定副臂安装角。  
副臂长度：12m ~ 20m。

**副臂加长节** 2节，桁架式焊接结构，副臂长度可增加至28m、36m。

**独立臂头** 1节，桁架式焊接结构，有0°、15°和30°三种安装角度。  
独立副臂长度：4.6m。

#### 选装配置

**副起升机构** 双折线绳槽卷筒，由液压马达驱动，内置行星齿轮减速器和常闭式制动器，并带有平衡阀。

**臂端单滑轮** 安装在主臂顶端用于单股钢丝绳起重作业。

**210吨吊钩** 双钩，9个滑轮，最大起重量210吨。

**发动机** OM502LA.III/5，V形八缸水冷电喷柴油发动机，戴姆勒制造，最大净功率420kW/1800rpm，最大扭矩2700Nm/1300rpm，国III排放标准。  
燃油箱容积：450L。

产品各部件明细如上所述，具体部件明细请参照产品报价单

## 技术规格

## Technical specifications



### Chassis

<b>Frame</b>	Designed and manufactured by XCMG, with all covered walking surface, anti-torsion box structure and optimal load-bearing structure design, made of imported high strength steel.
<b>Outriggers</b>	4 outriggers arranged in H-shape, double-stage outrigger beam. Outrigger beams and jacks are hydraulically controlled. There is an outrigger control station located at each side of the chassis, and there is a level gauge, panel lamp and speed-up button on each control station. There is a check valve fitted in each outrigger cylinder, and a double-way hydraulic valve fitted in each jack cylinder.
<b>Engine</b>	OM502LA.E3A/1, V-shaped eight-cylinder water-cooled EFI diesel engine, manufactured by Daimler, with Max. net power 480 kW at 1800 rpm and max. torque of 2800 Nm at 1080 rpm, compliant with China III emission standard. Fuel tank capacity : 450 L
<b>Hydraulic system</b>	Constant displacement open system. The constant gear pump is connected to the engine through PTO for controlling the movements of outriggers and steering.
<b>Transmission</b>	Electric controlled transmission imported from ZF Germany, with manual and automatic control, equipped with retarder brake, 16 speeds forward and two reverse.
<b>Transfer case</b>	Mechanical transfer box imported from KESSLER Germany, equipped with an emergency steering oil pump.
<b>Axles</b>	Imported high strength KESSLER axle with pneumatic drum brake, 12×8.
<b>Suspension</b>	Hydro-pneumatic suspensions adopted have good shock-absorbing effect. Various functions such as automatic leveling, moving up and down of suspension, and switching over of elastic and rigid suspension are available.
<b>Tires</b>	12 tires and 1 spare tire with large bearing capacity, each axle is equipped with a tire, made by Double Coin. Tire specifications: 385/95R25 (14.00R25)
<b>Brakes</b>	Service brake: double-circuit air pressure brake, acting on all wheels. Parking brake: spring energy brake, acting on wheels of 2-6 axles. Auxiliary brake: engine retarder brake, engine exhaust brake, which are safe and reliable, and will prolong the service life of brake lining.

**Steering** 1、2、5、6axles are mechanically steered with hydraulic servo.

**Driver's cab** Full dimension steel structure luxury cab supplies operator comfort with suspension connection structure and rear damper adopted. Electrically operated lifters of safety glass, electrically controlled rear mirrors, steering wheel adjustable in height and angle, large screen liquid crystal display and CD player are available. New integrated central control station with reasonable layout and circular modeling embodies ergonomic design. Air conditioner is standard.

**Electric System** 24V DC, two sets of 12V battery in series.



### Superstructure

<b>Frame</b>	Designed and manufactured by XCMG, made of high strength steel.
<b>Superstructure engine</b>	OM906LA.E2/3, in-line, six-cylinder water-cooled EFI diesel engine, manufactured by DB, with Max. net power of 180 kW at 2200 rpm and maximum torque of 900 Nm at 1500 rpm, compliant with China II emission standard. Fuel tank capacity: 320 L.
<b>Hydraulic system</b>	Variable pump driven by superstructure engine, used for hoisting, elevating, telescoping and slewing operation. Imported electro-hydraulic direction valve, matching perfectly with variable piston pump, contributes to smooth starting and stopping. An air-cooled hydraulic oil cooler may effectively reduce the temperature of oil in the system.
<b>Operating mode</b>	Infinite speed regulation, electric proportional pilot control. All movements are controlled by 2 control levers.
<b>Main winch system</b>	Driven by a hydraulic motor, with a Lebus groove drum, build-in planetary reducer and normally closed brake, and balance valve equipped.

## 技术规格

## Technical specifications

	High tension wire rope. Rope socket makes reeving easy and fast.
<b>Slewing system</b>	3-row roller type external gearing slewing ring. Double-slewing system arranged symmetrically is driven by a hydraulic motor, with built-in planetary gear reducer and normally closed brake fitted. Power control, free slewing and infinite slewing speed regulation are available.
<b>Operator's cab</b>	Ergonomically designed cab, safe and comfortable, with safety glass and roof protective grills equipped. The cab can be tilted 21° backwards. LMI, electrical control box, fan, electric windshield wiper, accelerator pedal, engine starter switch are equipped. Air conditioner is standard.
<b>Safety devices</b>	Hydraulic counterbalance valve, hydraulic relief valve, double-way hydraulic valve, LMI, Lowering limiter for preventing wire rope over-releasing; Anti-two block at boom head for preventing wire rope over-winding; and anemometer for measuring the wind velocity at height.
<b>LMI</b>	A safety protective unit located in the operator's cab. When the actual load moment is approaching overloading value, audible warning will be sent out, and the dangerous operation will be automatically stopped ahead of overloading. Overload memory function (black box) and fault self-diagnosis function are available.
<b>Combined counterweight</b>	Total weight is 85 t. 5 counterweight combinations of 25 t, 37 t, 49 t, 71 t and 85 t are available.
<b>Electric System</b>	24V DC, two sets of 12V battery in series.

<b>Jib</b>	2-section,lattice and box welding structure. 0° , 15° and 30° jib offset angles are available. Jib length:12 m ~ 20 m.
<b>Jib inserts</b>	Lattice welding structure, each is 8 m. Two inserts are standard. 1 section ,lattice welding structure. 0° , 15° and 30° jib offset angles are available.
<b>Independent jib head</b>	Length: 4.6 m.

## Optional equipment

<b>Auxiliary winch system</b>	Driven by a hydraulic motor, with a Lebus groove drum, build-in planetary reducer and normally closed brake, and balance valve equipped.
<b>Single top</b>	Fixed on the boom top , used in condition of lifting with single wirerope.
<b>210t hook</b>	Double hook , 9 Pulley , Lifting capacity 210t.
<b>Engine</b>	OM502LA.III/5, V-shaped eight-cylinder water-cooled EFI diesel engine, manufactured by Daimler, with Max. net power 420 kW at 1800 rpm and max. torque of 2700 Nm at 1300 rpm, compliant with China III emission standard. Fuel tank capacity : 450 L



## Boom system

<b>Boom</b>	Consists of one base section and 6 telescopic sections, with oval cross section, welding structure. Single-cylinder pinning telescoping system, one telescoping cylinder with safe valve are used for telescoping the boom into various boom configurations. Boom length:13.5 m ~ 72 m.
-------------	--

**Product parts list is as mentioned above. Please refer to the product quotation for specific parts.**



## 重量 Weight



车桥 Axles	1	2	3	4	5	6	总重量 Total weight
t	12	12	12	12	12	12	72

备注：不带平衡重、臂端单滑轮、起重机吊钩、副臂、副起升机构、备胎、备胎支架。



Note : Without counterweight ,single top,hook block,jib,auxiliary winch mechanism,spare tire,spare tire bracket.







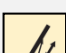
吊钩 Hook block	倍率 Parts of line	吊钩重量 Weight (kg)	备注 Remarks
210t	18	2319	双钩 Double hook , 选装Optional
140 t	12	1827	双钩 Double hook , 标配Standard
65 t	5	1000	单钩 Single hook , 标配Standard
30 t	3	620	单钩 Single hook , 标配Standard

## 作业速度 Working speeds

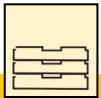
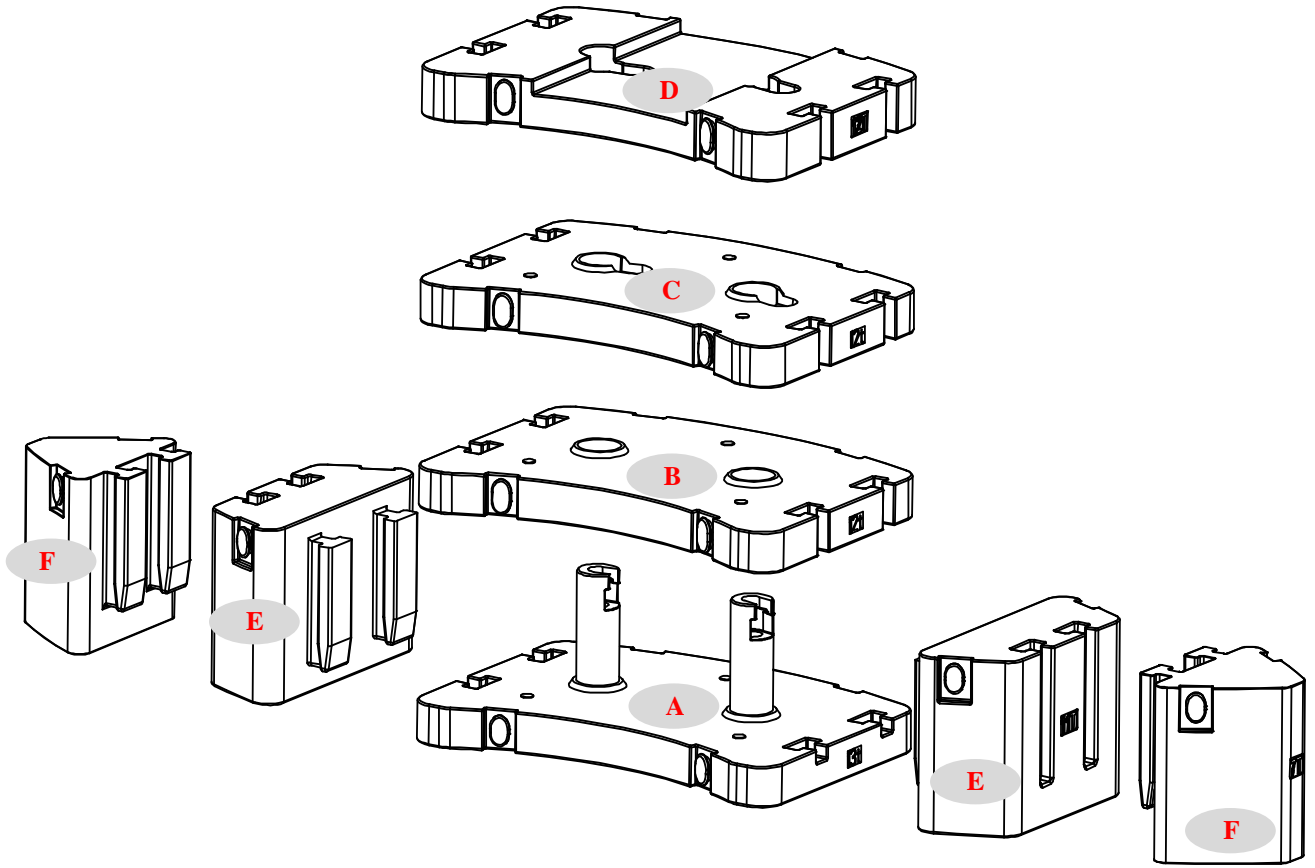


		
385/95 R 25 ( 14.00 R 25 )	2~70	50%



作业机构 Drive	作业速度 Working speed	最大单绳拉力 Max. single line pull	钢丝绳直径/长度 Rope diameter/ length
	0-115 m/min , 单绳 , 第四层 m/min, single line, 4th layer	127 kN	24 mm/380 m
	0-118 m/min , 单绳 , 第四层 m/min, single line, 4th layer	127 kN	24 mm/220 m
	0-1.4 r/min		
	从-0.5°抬起至80°约85s Approx. 85 seconds for boom elevation from -0.5° to 80°		
	从13.5m伸出至72m约700s Approx. 700 seconds for boom extension from 13.5 m to 72 m		

# 平衡重 Counterweight



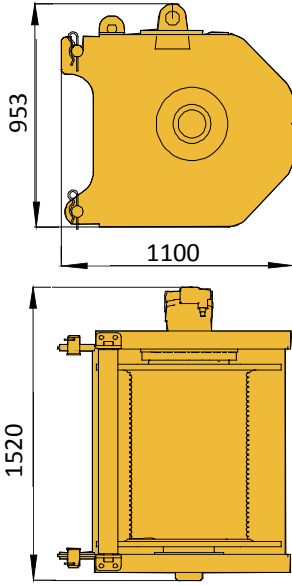
平衡重 Counterweight	A	B	C	D	E	F
尺寸 (长×宽×高) mm Size (L×W×H) mm	3400×2453 ×935	3400×2453 ×249	3400×2453 ×280	3400×2453 ×292	2244×1055 ×1051	1544×1185 ×1051
重量 t Weight (t)	13	12	12	12	11	7

工况模式 Working mode	85t	71t	49t	37t	25t
组合形式 Combinations	A+B+C+D+ E×2+F×2	A+B+C+D+ E×2	A+B+C+D	A+B+C	A+B

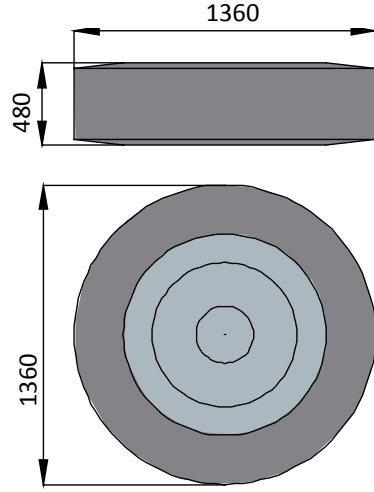
# 运输部件尺寸

## Transportation components dimension

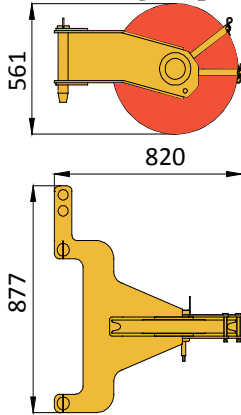
副起升机构 (含钢丝绳) 1854kg  
Auxiliary winch (rope included)



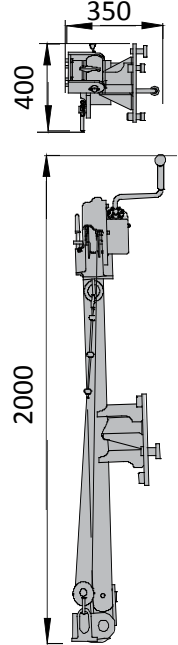
备胎 250kg  
Spare tire



臂端单滑轮 145kg  
Single top

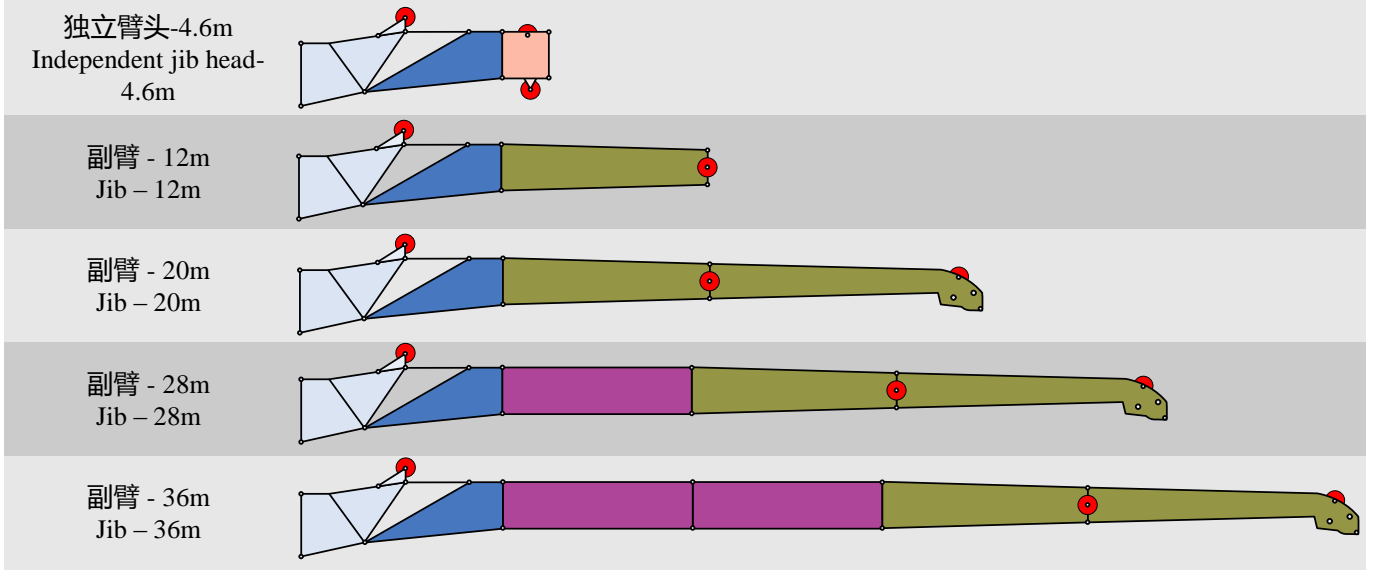


备胎支架 65kg  
Support of Spare tire



# 臂架组合方案

## Boom / Jib combinations



部件 Component	结构形式 Structure	尺寸 (长×宽×高) mm Size ( L×W×H ) (mm)	重量 kg Weight (kg)
连接架 Connecting bracket		2600×950×1700	365
旋转架 Rotating bracket		3200×950×1400	330
一节副臂总成 First jib section assembly		8210×860×980	666
二节副臂总成 Second jib section assembly		8350×990×600	548
副臂加长节 Jib insert		8000×880×750	552
独立臂头 Independent jib head		536×894×1516	234

# 臂架组合方案

## Boom / Jib combinations



主臂  
Telescopic boom

T : 13.5~72 m

副臂  
Jib

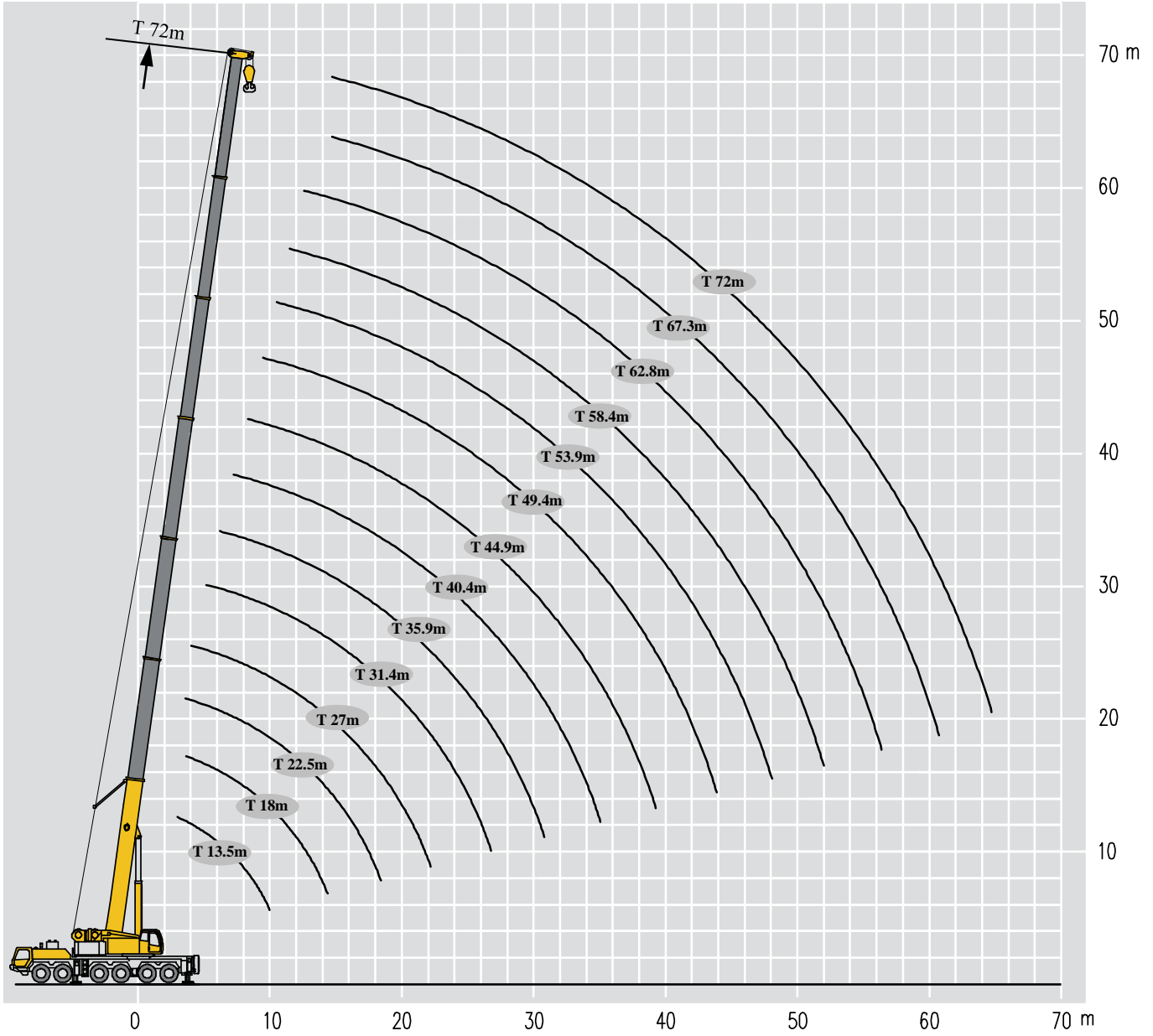
T : 49.4~67.3 m  
J : 12~36 m

独立臂头  
Independent jib head

T : 67.3~72 m  
I : 4.6 m

# 起升高度曲线图 Lifting height chart

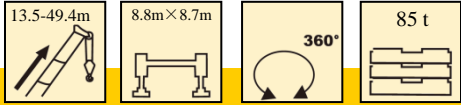
主臂  
Boom



# 起重性能表

## Lifting capacities

T 13.5~49.4m



	13.5m	18m	18m	18m	22.5m	22.5m	22.5m	27m	27m	27m	31.4m	31.4m	
3	260												3
3.5	177	77	144	150	57	128	150						3.5
4	170	73	141	150	53	119	150	121	83	135			4
4.5	160	69	133	150	50	111	145	115	80	130	83.3	116	4.5
5	156	66	125	145	47	105	130	108.7	76.9	125	80.7	116	5
6	133	61	112	135	41	93	120	97.3	71.4	120	75.4	107.9	6
7	110	56	101	118	37	84	110	88	67.1	111	70.4	99.5	7
8	95	51	93	103	33	76	100	79.7	62.8	102.7	66.3	91.2	8
9	80	48	85	91	30	69	90	73	58.9	90.7	63.2	85	9
10	71	44	79	81	28	63	80	67.6	54.9	81	60.1	78	10
12		38	68	66	24	54	65	58.7	47.6	66.2	52.8	66	12
14		34	53	55	21	47	55	51.3	41.5	55.6	47	57.8	14
16					19	42	46	45.3	36.7	47	41.9	49.3	16
18					17.5	38	39	41	33	40.2	38.2	42.7	18
20								35.7	30.2	35.1	34.8	37.5	20
22								33	26.7	30.5	31.9	33.1	22
24											29.3	29	24
26											25.1	25.6	26
组合code	000000	000001	000100	010000	000002	000110	110000	021000	000111	111000	001111	011110	组合code

	31.4m	35.9m	35.9m	35.9m	40.4m	40.4m	40.4m	44.9m	44.9m	44.9m	49.4m	49.4m	
4.5	116												4.5
5	111.2												5
6	103.9	77.1	92	92									6
7	97.9	73.4	87	87	46.3	71	71						7
8	88.7	69.5	82	81.9	43.2	70.7	71	33.2	58.1	58.1			8
9	80.3	66.3	77	75.5	40.1	67.9	69.2	31.7	56.7	56.7	31	47.9	9
10	75.1	62.6	70	69.2	37.3	65.1	64.8	29.9	54	54.6	31	45.8	10
12	63.7	56.8	65	60.2	33.4	59.2	55.6	26.9	47.1	53	27.5	41.7	12
14	54.6	50.6	57.1	52.3	29.9	54.1	48.7	24.1	42.1	47.1	25.8	37.4	14
16	46.2	45.7	48.6	46.3	27.3	47.8	43.4	21.6	37.1	41.7	23.5	33.2	16
18	38.8	42	41.8	39.8	24.9	42	38.8	20	33.7	37.1	20.8	30.2	18
20	33.6	37.2	36.7	34.6	23	36.7	35.5	18.5	30.4	33.4	20	27.5	20
22	29.7	33	32.2	30.5	21.3	32.5	31.2	16.8	28	30.6	18.4	25.1	22
24	25.6	30	28.1	26.5	19.9	28.9	27.3	15.8	25.9	28.1	16.8	23.2	24
26	21	26.5	24.8	23.1	18.7	25.6	23.9	14.8	23.6	24.7	16.2	21.4	26
28		23.7	22	20.2	17.6	22.8	21.1	13.6	21.9	22	14.9	19.6	28
30		20.4	19.6	17.3	16.6	20.4	18.6	12.9	20	19.5	13.8	18.3	30
32					15.7	18.3	16.6	12.1	18.1	17.6	13.6	17	32
34					14.9	15.7	14.1	11.6	16.3	15.7	12.8	15.9	34
36								11	14.9	14.1	12.1	14.5	36
38								10.5	13.5	11.5	11.4	13.4	38
40											10.9	12	40
42											10.3	10.5	42
组合code	211000	011111	111110	211100	011112	111111	211110	011122	121111	211111	111122	122111	组合code

# 起重性能表

## Lifting capacities

T 49.4~72m

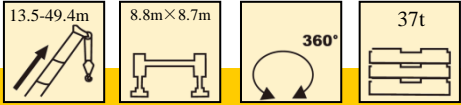
9	49.4-72m		8.8m×8.7m		360°		85 t													
	49.4m	53.9m	53.9m	53.9m	58.4m	58.4m	58.4m	62.8m	62.8m	67.3m	72m									
9	48																9			
10	48	27.9	36	43													10			
12	48	25.9	34	41.9	25.2	28.1	33	23.4	26.6								12			
14	42.3	23.9	31.5	36.6	23	26.3	31.1	22.2	25.7	20.8	18						14			
16	37.6	21.5	29	32.4	21.3	24.3	28.6	20.8	24.1	19.9	17.1						16			
18	34	19.5	26	29	19.8	22.3	25.8	19.5	22.5	19	16.6						18			
20	30.6	18.1	24.1	26	18.5	21	23.3	18.3	20.8	18.2	16						20			
22	28	16.6	22	23.6	17.3	19.5	20.9	17.1	18.8	16.9	15.3						22			
24	25.5	15.8	19.9	21.6	16.1	17.9	19.3	15.9	17.1	15.6	14						24			
26	23.6	14.6	18.3	19.8	15	16.1	17.6	14.6	15.8	14.3	13						26			
28	21.6	13.8	16.9	18.1	14	15.1	16.1	13.6	14.5	13.2	12						28			
30	19.5	12.9	15.7	16.7	12.3	13.8	14.9	12.6	13.5	12.3	11						30			
32	17.5	12	14.6	15.4	12.5	12.9	13.8	11.6	12.4	11.4	10.1						32			
34	15.6	11.3	13.6	14.2	11.6	12	12.8	10.8	11.5	10.5	9.5						34			
36	14.1	10.5	12.7	13.3	11	11.1	12	10.1	10.6	9.9	8.9						36			
38	12.8	10	11.8	12.4	10.5	10.5	11.1	9.5	10	9.1	8.1						38			
40	11.5	9.5	11.1	11.6	9.9	9.8	10.4	9	9.4	8.5	7.7						40			
42	10.5	9	10.3	10.6	9.3	9.2	9.8	8.3	8.6	8	7.2						42			
44		8.5	9.8	9.6	8.8	8.7	9.1	7.8	8	7.5	6.7						44			
46		8	8.7	8.8	8.3	8.1	8.5	7.4	7.5	7	6.2						46			
48					7.8	7.6	7.9	6.9	7	6.7	5.9						48			
50					7.5	7.1	6.2	6.5	6.7	6.2	5.5						50			
52								6.2	6.2	5.9	5						52			
54								5.8	5.6	5.5	4.7						54			
56										5.2	4.5						56			
58										4.5	4.2						58			
60											4						60			
62											3.7						62			
组合code	221111	111222	122211	222111	112222	122221	222211	122222	222221	222222	333333	组合code								



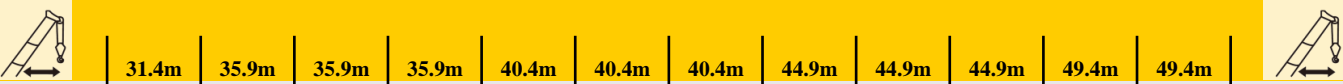
# 起重性能表

## Lifting capacities

T 13.5~49.4m



	13.5m	18m	18m	18m	22.5m	22.5m	22.5m	27m	27m	27m	31.4m	31.4m	
3	215												3
3.5	177	77	144	150	57	128	150						3.5
4	170	73	141	150	53	119	150	121	83	135			4
4.5	157	69	133	150	50	111	145	115	80	130	83.3	116	4.5
5	141.8	66	125	141.1	47	105	130	108.7	76.9	125	80.7	116	5
6	118.2	61	112	117.7	41	93	116.7	97.3	71.4	117.2	75.4	107.9	6
7	101	56	101	100.5	37	84	99.5	88	67.1	100.2	70.4	99.5	7
8	86.4	51	87.2	85.7	33	76	84.7	79.7	62.8	85.2	66.3	88	8
9	75	48	75.9	74.4	30	69	73.4	73	58.9	74	63.2	76.5	9
10	66	44	66.9	65.4	28	63	64.5	67.6	54.9	65	60.1	67.5	10
12		38	50	48	24	51.6	46.7	53.1	47.6	47.6	52.7	50.7	12
14		34	37.8	36	21	39.5	34.8	41	36.2	35.6	40.7	38.7	14
16					19	31.3	27	32.7	28.1	27.6	32.5	30.6	16
18					17.5	25.6	21.3	27	22.6	22.1	26.6	25	18
20								22.6	18.3	17.8	22.3	20.6	20
22								19.1	14.9	14.5	18.8	17.3	22
24											16.1	14.5	24
26											14	12.4	26
组合code	000000	000001	000100	010000	000002	000110	110000	021000	000111	111000	001111	011110	组合code

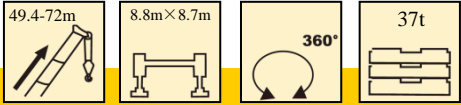


	31.4m	35.9m	35.9m	35.9m	40.4m	40.4m	40.4m	44.9m	44.9m	44.9m	49.4m	49.4m	
4.5	116												4.5
5	111.2												5
6	103.9	77.1	92	92									6
7	97.9	73.4	87	87	46.3	71	71						7
8	84.7	69.5	82	81.9	43.2	70.7	71	33.2	58.1	58.1			8
9	73.4	66.3	75.7	74.2	40.1	67.9	69.2	31.7	56.7	56.7	31	47.9	9
10	64.4	62.6	66.7	65.2	37.3	65.1	64.8	29.9	54	54.6	31	45.8	10
12	46.7	52	49.7	47.7	33.4	50.8	48.7	26.9	47.1	49.8	27.5	41.7	12
14	34.7	40	37.7	35.7	29.9	38.8	36.7	24.1	38.5	37.8	25.8	37.4	14
16	27	31.8	29.6	27.8	27.3	30.8	28.8	21.6	30.5	29.8	23.5	30.5	16
18	21.3	26.1	24	22.3	24.9	25.1	23.1	20	24.8	24.1	20.8	24.8	18
20	17.1	21.6	19.6	18	22.6	20.8	18.8	18.5	20.3	19.8	20	20.5	20
22	13.8	18.3	16.3	14.6	19.1	17.3	15.5	16.8	17	16.5	18.4	17.1	22
24	11.1	15.5	13.6	12	16.3	14.6	12.8	15.8	14.4	13.8	16	14.4	24
26	9	13.4	11.5	9.9	14.1	12.5	10.6	14.5	12.1	11.6	13.8	12.3	26
28		11.5	9.8	8.1	12.4	10.6	8.9	12.8	10.4	9.9	11.9	10.5	28
30		10	8.3	6.7	10.9	9.1	7.5	11.1	8.9	8.4	10.4	9	30
32					9.5	7.9	6.2	9.9	7.5	7	9	7.7	32
34					8.4	6.7	5	8.8	6.5	6	8	6.5	34
36								7.7	5.5	5	7	5.5	36
38								7	4.7	4.2	6.2	4.7	38
40											5.4	4	40
42											4.7	3.2	42
组合code	211000	011111	111110	211100	011112	111111	211110	011122	121111	211111	111122	122111	组合code

# 起重性能表

## Lifting capacities

T 49.4~72m

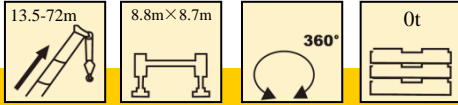


	49.4m	53.9m	53.9m	53.9m	58.4m	58.4m	58.4m	62.8m	62.8m	67.3m	72m	
9	48											9
10	48	27.9	36	43								10
12	48	25.9	34	41.9	25.2	28.1	33	23.4	26.6			12
14	37.6	23.9	31.5	36.6	23	26.3	31.1	22.2	25.7	20.8	18	14
16	29.6	21.5	29	29.8	21.3	24.3	28.6	20.8	24.1	19.9	17.1	16
18	24	19.5	25.1	24.1	19.8	22.3	25.8	19.5	22.5	19	16.6	18
20	19.6	18.1	20.8	19.8	18.5	21	22.1	18.3	20.1	18.2	16	20
22	16.3	16.6	17.3	16.5	17.3	19.3	18.3	17.1	16.8	16.8	15.3	22
24	13.5	15.8	14.6	13.8	16.1	16.3	15.4	15.4	14.1	14.1	13.5	24
26	11.5	13.9	12.5	11.6	14.9	14	13	13.1	12	12.1	11.5	26
28	9.6	12	10.6	9.9	12.9	12	11	11.5	10.3	10.5	10	28
30	8.1	10.5	9.1	8.4	11.1	10.4	9.4	10	8.9	9	8.5	30
32	6.9	9.3	8	7	9.8	9	8	8.6	7.5	7.7	7.5	32
34	5.7	8.1	6.7	6	8.5	7.7	6.9	7.5	6.5	6.7	6.5	34
36	4.9	7.2	5.9	5	7.5	6.7	5.7	6.5	5.5	5.9	5.5	36
38	4	6.2	5	4.2	6.5	5.9	4.9	5.7	4.7	5	4.7	38
40	3.2	5.5	4.2	3.5	5.7	5	4	5	4	4.2	4.2	40
42	2.6	4.9	3.6	2.7	5	4.2	3.3	4.4	3.2	3.7	3.5	42
44		4.2	3	2.2	4.5	3.7	2.7	3.7	2.7	3.1	3	44
46		3.7	2.5	1.6	3.8	3.1	2.2	3.2	2.2	2.6	2.5	46
48					3.3	2.6	1.6	2.7	1.6	2.1	2.1	48
50					2.8	2.1	1.1	2.2	1.3	1.6	1.6	50
52								1.8		1.3	1.3	52
54								1.5				54
组合code	221111	111222	122211	222111	112222	122221	222211	122222	222221	222222	333333	组合code

# 起重性能表

## Lifting capacities

T 13.5~72m



	13.5m	18m	18m	18m	22.5m	22.5m	22.5m	27m	27m	27m	31.4m	31.4m	
3	199.6												3
3.5	173.3	77	144	150	57	128	150						3.5
4	152.6	73	141	150	53	119	150	121	83	135			4
4.5	136.3	69	133	135.6	50	111	134.8	115	80	130	83.3	116	4.5
5	120.5	66	121.5	119.7	47	105	118.7	108.7	76.9	119.4	80.7	116	5
6	96.7	61	97.7	96	41	93	95	97.3	71.4	95.7	75.4	98.5	6
7	75.7	56	77.5	74.4	37	80	72.5	82.2	67.1	73.7	70.4	78.7	7
8	52.6	51	54.3	51.3	33	56.7	49.6	59	51.6	50.7	58.5	55.6	8
9	37.7	41.7	39.5	36.6	30	41.8	34.8	44.1	36.7	35.8	43.6	40.7	9
10	28.5	32	30	27.3	28	32.2	25.8	34.1	27.6	26.8	33.7	31.1	10
12		20.8	19.1	16.8	22.5	20.8	15.5	22.6	17	16.3	22.1	20.1	12
14		14.5	12.9	10.9	16	14.5	9.6	16.1	11	10.5	15.8	13.8	14
16					11.9	10.5	6	12	7.2	6.7	11.6	9.9	16
18					9	7.7	3.3	9.1	4.5	4	8.9	7	18
20								7	2.7	2.2	6.7	5	20
22								5.5	1.1		5.2	3.5	22
24											3.8	2.2	24
26											2.8	1.3	26
组合code	000000	000001	000100	010000	000002	000110	110000	021000	000111	111000	001111	011110	组合code

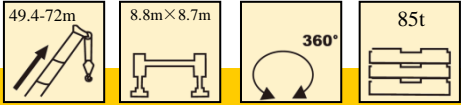
	31.4m	35.9m	35.9m	35.9m	40.4m	40.4m	40.4m	44.9m	44.9m	44.9m	49.4m	49.4m	
4.5	116												4.5
5	111.2												5
6	95	77.1	92	92									6
7	72.2	73.4	77	74	46.3	71	71						7
8	49.3	57.3	54	51	43.2	55.7	52.3	33.2	55.1	54.2			8
9	34.7	42.5	39.1	36.2	40.1	40.8	37.6	31.7	40.2	39.2	31	40.3	9
10	25.8	32.7	29.6	27.1	34	31.3	28.3	29.9	30.8	29.8	31	30.8	10
12	15.4	21.3	18.8	16.6	22.5	20.1	17.6	23	19.6	19	21.8	19.8	12
14	9.6	15	12.6	10.6	16	13.9	11.6	16.5	13.5	12.9	15.5	13.5	14
16	5.9	11	8.8	6.9	11.9	10	7.7	12.4	9.5	9	11.4	9.5	16
18	3.3	8.1	6	4.2	9	7.2	5.2	9.5	6.7	6.2	8.5	6.9	18
20	1.5	6	4	2.3	7	5.2	3.2	7.4	4.7	4.2	6.5	4.9	20
22		4.5	2.6		5.4	3.6	1.6	5.7	3.2	2.7	4.9	3.2	22
24		3.2	1.3		4	2.3		4.5	2	1.5	3.6	2.1	24
26		2.2			3	1.3		3.3	1.1		2.6	1.1	26
28		1.3			2.2			2.6			1.8		28
30					1.5			1.8			1		30
32								1.1					32
组合code	211000	011111	111110	211100	011112	111111	211110	011122	121111	211111	111122	122111	组合code

	49.4m	53.9m	53.9m	53.9m	58.4m	58.4m	58.4m	62.8m	62.8m	67.3m	72m	
9	39											9
10	29.6	27.9	31.3	29.8								10
12	18.6	22.1	20.1	19	25.2	25.5	24	21.1	19.5			12
14	12.5	15.6	13.9	12.9	18.3	17.1	15.9	14.9	13.4	13.5	13	14
16	8.6	11.5	10	9	13.3	12.3	11	10.9	9.5	9.8	9.4	16
18	6	8.6	7.2	6.2	9.9	9	7.7	8	6.7	7.2	6.7	18
20	4	6.7	5.2	4.2	7.5	6.5	5.5	6	4.7	5.2	5	20
22	2.5	5	3.6	2.7	5.7	4.7	3.7	4.5	3.2	3.7	3.6	22
24	1.3	3.7	2.3	1.5	4.2	3.3	2.3	3.2	2.1	2.6	2.5	24
26		2.7	1.3		3.1	2.2	1.3	2.2	1.1	1.6	1.6	26
28		1.8			2.2	1.3		1.5				28
30		1.1			1.3							30
组合code	221111	111222	122211	222111	112222	122221	222211	122222	222221	222222	333333	组合code

# 起重性能表

## Lifting capacities

T 13.5~49.4m



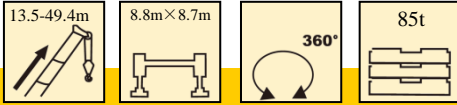
	13.5m	18m	18m	18m	22.5m	22.5m	22.5m	27m	27m	27m	31.4m	31.4m	
3	215.6												3
3.5	177	77	144	150	57	128	150						3.5
4	170	73	141	150	53	119	150	121	83	135			4
4.5	160	69	133	150	50	111	145	115	80	130	83.3	116	4.5
5	154.6	66	125	145	47	105	130	108.7	76.9	125	80.7	116	5
6	133	61	112	134.5	41	93	120	97.3	71.4	120	75.4	107.9	6
7	110	56	101	118	37	84	110	88	67.1	111	70.4	99.5	7
8	95	51	93	103	33	76	100	79.7	62.8	102.7	66.3	91.2	8
9	80	48	85	91	30	69	90	73	58.9	90.7	63.2	85	9
10	71	44	79	81	28	63	79.9	67.6	54.9	80.7	60.1	78	10
12		38	62.1	60.2	24	54	59.2	58.7	47.6	59.8	52.8	62.8	12
14		34	48.8	47.1	21	47	46.1	51.3	41.5	46.7	47	49.6	14
16					19	41.2	37.2	42.5	36.7	37.7	41.9	40.6	16
18					17.5	34.6	30.6	35.7	31.6	31.3	35.5	34	18
20								30.6	26.6	26.3	30.5	28.8	20
22								26.6	22.8	22.3	26.5	24.8	22
24											23.3	21.6	24
26											20.6	19.1	26
组合code	000000	000001	000100	010000	000002	000110	110000	021000	000111	111000	001111	011110	组合code

	31.4m	35.9m	35.9m	35.9m	40.4m	40.4m	40.4m	44.9m	44.9m	44.9m	49.4m	49.4m	
4.5	116												4.5
5	111.2												5
6	103.9	77.1	92	92									6
7	97.9	73.4	87	87	46.3	71	71						7
8	88.7	69.5	82	81.9	43.2	70.7	71	33.2	58.1	58.1			8
9	80.3	66.3	77	75.5	40.1	67.9	69.2	31.7	56.7	56.7	31	47.9	9
10	75.1	62.6	70	69.2	37.3	65.1	64.8	29.9	54	54.6	31	45.8	10
12	59.1	56.8	61.8	60	33.4	59.2	55.6	26.9	47.1	53	27.5	41.7	12
14	46.1	50.6	48.7	47	29.9	49.7	47.7	24.1	42.1	47.1	25.8	37.4	14
16	37.1	41.6	39.6	38	27.3	40.7	38.7	21.6	37.1	39.7	23.5	33.2	16
18	30.6	34.8	33.1	31.3	24.9	34	32.2	20	33.7	33.2	20.8	30.2	18
20	25.6	29.8	28	26.5	23	29	27.1	18.5	28.6	28.1	20	27.5	20
22	21.6	25.8	24.1	22.5	21.3	25	23.3	16.8	24.6	24.1	18.4	24.8	22
24	18.6	22.6	20.8	19.3	19.9	21.8	20.1	15.8	21.5	21	16.8	21.6	24
26	16	20	18.3	16.8	18.7	19.1	17.5	14.8	18.8	18.3	16.2	18.8	26
28		17.8	16.1	14.5	17.6	17	15.3	13.6	16.6	16.1	14.9	16.6	28
30		15.9	14.1	12.6	16.6	15	13.4	12.9	14.8	14.3	13.8	14.8	30
32					15	13.5	11.8	12.1	13.1	12.6	13.6	13.1	32
34					13.5	12	10.4	11.6	11.8	11.3	12.8	11.8	34
36								11	10.5	10	11.9	10.5	36
38								10.5	9.5	9	10.8	9.5	38
40											9.9	8.5	40
42											9	7.5	42
组合code	211000	011111	111110	211100	011112	111111	211110	011122	121111	211111	111122	122111	组合code

# 起重性能表

## Lifting capacities

T 49.4~72m

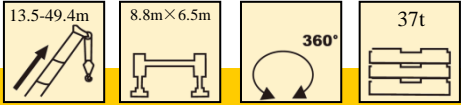


	49.4m	53.9m	53.9m	53.9m	58.4m	58.4m	58.4m	62.8m	62.8m	67.3m	72m	
9	48											9
10	48	27.9	36	43								10
12	48	25.9	34	41.9	25.2	28.1	33	23.4	26.6			12
14	42.3	23.9	31.5	36.6	23	26.3	31.1	22.2	25.7	20.8	18	14
16	37.6	21.5	29	32.4	21.3	24.3	28.6	20.8	24.1	19.9	17.1	16
18	33	19.5	26	29	19.8	22.3	25.8	19.5	22.5	19	16.6	18
20	28	18.1	24.1	26	18.5	21	23.3	18.3	20.8	18.2	16	20
22	24	16.6	22	23.6	17.3	19.5	20.9	17.1	18.8	16.9	15.3	22
24	20.8	15.8	19.9	21	16.1	17.9	19.3	15.9	17.1	15.6	14	24
26	18.1	14.6	18.3	18.3	15	16.1	17.6	14.6	15.8	14.3	13	26
28	16	13.8	16.9	16.1	14	15.1	16.1	13.6	14.5	13.2	12	28
30	14	12.9	15	14.3	12.3	13.8	14.9	12.6	13.5	12.3	11	30
32	12.5	12	13.5	12.6	12.5	12.9	13.8	11.6	12.4	11.4	10.1	32
34	11	11.3	12	11.3	11.6	12	12.3	10.8	11.5	10.5	9.5	34
36	9.9	10.5	10.8	10	11	11.1	10.9	10.1	10.5	9.9	8.9	36
38	8.8	10	9.6	9	10.5	10.5	9.8	9.5	9.4	9.1	8.1	38
40	7.7	9.5	8.8	8	9.9	9.5	8.8	9	8.4	8.5	7.7	40
42	6.9	9	7.9	7	9.3	8.6	7.7	8.3	7.5	7.7	7.2	42
44		8.3	7	6.4	8.5	7.9	7	7.7	6.7	7	6.7	44
46		7.5	6.4	5.5	7.9	7	6.2	7	6	6.2	6	46
48					7.2	6.4	5.5	6.5	5.5	5.7	5.5	48
50					6.5	5.7	5	5.9	4.9	5	4.9	50
52								5.2	4.2	4.5	4.4	52
54								4.7	3.7	4	4	54
56										3.7	3.5	56
58										3.2	3.2	58
60											2.8	60
62											2.5	62
组合code	221111	111222	122211	222111	112222	122221	222211	122222	222221	222222	333333	组合code

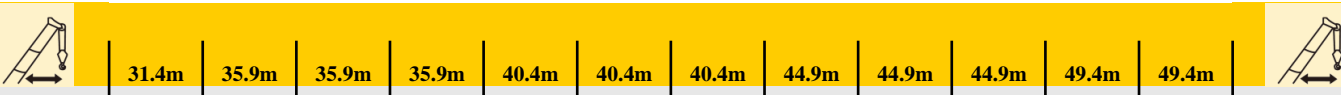
# 起重性能表

## Lifting capacities

T 13.5~49.4m



	13.5m	18m	18m	18m	22.5m	22.5m	22.5m	27m	27m	27m	31.4m	31.4m	
3	204.1												3
3.5	177	77	144	150	57	128	150						3.5
4	170	73	141	150	53	119	150	121	83	135			4
4.5	157	69	133	150	50	111	145	115	80	130	83.3	116	4.5
5	141.8	66	125	141.1	47	105	130	108.7	76.9	125	80.7	116	5
6	118.2	61	112	117.7	41	93	116.7	97.3	71.4	117.2	75.4	107.9	6
7	89	56	90.5	88	37	84	86.4	88	67.1	87.2	70.4	91.5	7
8	68.2	51	69.5	67.2	33	71.5	66	73.2	62.8	66.7	66.3	70.5	8
9	54.7	48	56	53.8	30	57.7	52.6	59.2	54	53.3	58.8	56.8	9
10	45.2	44	46.3	44.3	28	48	43.2	49.5	44.5	43.8	49.2	47.2	10
12		35.1	33.7	31.8	24	35.2	30.8	36.7	32	31.5	36.2	34.5	12
14		27.1	25.8	24.1	21	27.3	23.1	28.6	24.1	23.6	28.3	26.6	14
16					19	21.8	17.6	23	18.8	18.3	22.8	21.1	16
18					17.5	17.8	13.8	19	14.9	14.5	18.6	17.1	18
20								15.9	11.9	11.5	15.6	14	20
22								13.5	9.5	9	13.3	11.6	22
24											11.3	9.8	24
26											9.6	8.1	26
组合code	000000	000001	000100	010000	000002	000110	110000	021000	000111	111000	001111	011110	组合code



	31.4m	35.9m	35.9m	35.9m	40.4m	40.4m	40.4m	44.9m	44.9m	44.9m	49.4m	49.4m	
4.5	116												4.5
5	111.2												5
6	103.9	77.1	92	92									6
7	86.2	73.4	87	87	46.3	71	71						7
8	65.7	69.5	69.2	67	43.2	70.7	68	33.2	58.1	58.1			8
9	52.5	58.1	55.7	53.6	40.1	57	54.6	31.7	56.5	55.7	31	47.9	9
10	43.1	48.3	46.1	44.1	37.3	47.2	45.1	29.9	46.8	46.2	31	45.8	10
12	30.8	35.7	33.5	31.6	33.4	34.6	32.6	26.9	34.2	33.7	27.5	34.2	12
14	23	27.6	25.6	23.8	28.5	26.6	24.6	24.1	26.3	25.8	25.8	26.3	14
16	17.6	22.1	20.1	18.5	22.8	21.1	19.3	21.6	20.8	20.3	22.5	20.8	16
18	13.8	18.1	16.3	14.5	18.8	17.1	15.4	19.3	16.8	16.3	18.5	17	18
20	10.8	15	13.1	11.6	15.8	14.1	12.4	16.1	13.9	13.4	15.4	13.9	20
22	8.5	12.6	10.9	9.3	13.4	11.8	10	13.8	11.5	11	13	11.5	22
24	6.5	10.6	9	7.4	11.5	9.9	8.1	11.8	9.5	9	11	9.5	24
26	5	9	7.4	5.9	9.9	8.3	6.5	10.1	8	7.5	9.4	8	26
28		7.7	6	4.5	8.5	7	5.2	8.9	6.7	6.2	8	6.7	28
30		6.7	4.9	3.3	7.4	5.7	4.2	7.7	5.5	5	7	5.5	30
32					6.4	4.9	3.2	6.7	4.5	4	6	4.5	32
34					5.5	4	2.3	5.9	3.7	3.2	5	3.7	34
36								5	3	2.5	4.4	3	36
38								4.5	2.2	1.8	3.7	2.3	38
40											3.1	1.8	40
42											2.6	1.1	42
组合code	211000	011111	111110	211100	011112	111111	211110	011122	121111	211111	111122	122111	组合code

# 起重性能表

## Lifting capacities


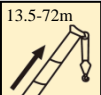
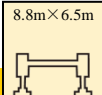

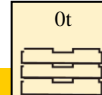

T 49.4~72m



	49.4m	53.9m	53.9m	53.9m	58.4m	58.4m	58.4m	62.8m	62.8m	67.3m	72m	
9	48											9
10	46	27.9	36	43								10
12	33.3	25.9	34	33.7	25.2	28.1	33	23.4	26.6			12
14	25.5	23.9	26.6	25.8	23	26.3	29.6	22.2	25.7	20.8	18	14
16	20.1	21.5	21.1	20.3	21.3	24.1	23.1	20.8	20.6	19.9	17.1	16
18	16.1	18.6	17.1	16.3	19.8	19.5	18.5	17.8	16.6	16.6	15.9	18
20	13.1	15.5	14.1	13.4	16.8	16.1	15	14.9	13.6	13.8	13	20
22	10.8	13	11.8	11	14.1	13.4	12.4	12.5	11.4	11.5	11	22
24	8.9	11.1	9.9	9	12	11.1	10.3	10.5	9.5	9.6	9.1	24
26	7.2	9.5	8.3	7.5	10.3	9.5	8.5	9	8	8.1	7.7	26
28	6	8.1	7	6.2	8.8	8	7	7.7	6.7	6.9	6.5	28
30	4.9	7	5.7	5	7.5	6.7	5.9	6.5	5.5	5.7	5.5	30
32	3.8	6	4.9	4	6.5	5.7	4.7	5.5	4.5	4.9	4.7	32
34	3.1	5.2	4	3.2	5.5	4.7	3.8	4.7	3.7	4	3.8	34
36	2.2	4.5	3.2	2.5	4.7	4	3.1	4	3	3.3	3.2	36
38	1.6	3.7	2.6	1.8	4	3.2	2.3	3.3	2.3	2.7	2.6	38
40	1.1	3.2	2	1.3	3.5	2.7	1.8	2.7	1.8	2.2	2.1	40
42		2.7	1.5		2.8	2.1	1.3	2.2	1.3	1.6	1.6	42
44		2.2	1		2.3	1.6		1.8		1.1	1.1	44
46		1.8			1.8	1.1		1.3				46
48					1.5			1				48
50					1.1							50
组合code	221111	111222	122211	222111	112222	122221	222211	122222	222221	222222	333333	组合code

# 起重性能表

## Lifting capacities

T 13.5~72m

	   													
	13.5m	18m	18m	18m	22.5m	22.5m	22.5m	27m	27m	27m	31.4m	31.4m		
3	195.4													3
3.5	173.3	77	144	150	57	128	150							3.5
4	152.6	73	141	150	53	119	150	121	83	135				4
4.5	136.3	69	133	135.6	50	111	134.8	115	80	130	83.3	116		4.5
5	92.5	66	94.7	90.7	47	98	88.2	101	76.9	89.7	80.7	96.4		5
6	55.3	59.2	57.1	54.1	41	59.5	52.2	61.7	54.2	53.3	61.2	58.2		6
7	38.1	41.3	39.6	37	37	41.6	35.5	43.5	37.1	36.3	43.1	40.6		7
8	28.1	31.1	29.3	27.1	32.7	31.1	25.6	33	27.1	26.6	32.6	30.3		8
9	21.5	24.3	22.6	20.6	25.8	24.5	19.3	26.1	20.6	20.1	25.6	23.6		9
10	16.8	19.6	18.1	16.1	21.1	19.6	14.9	21.1	16.1	15.5	20.8	18.8		10
12		13.3	11.9	10	14.6	13.4	9	14.8	10.1	9.6	14.5	12.6		12
14		9.4	8	6.2	10.6	9.5	5.2	10.8	6.4	6	10.5	8.8		14
16					7.9	6.7	2.7	8	3.8	3.3	7.7	6		16
18					5.9	4.7		6	2	1.5	5.7	4.2		18
20								4.5			4.2	2.7		20
22								3.2			3.1	1.5		22
24											2.1			24
26											1.3			26
组合code	000000	000001	000100	010000	000002	000110	110000	021000	000111	111000	001111	011110	组合code	

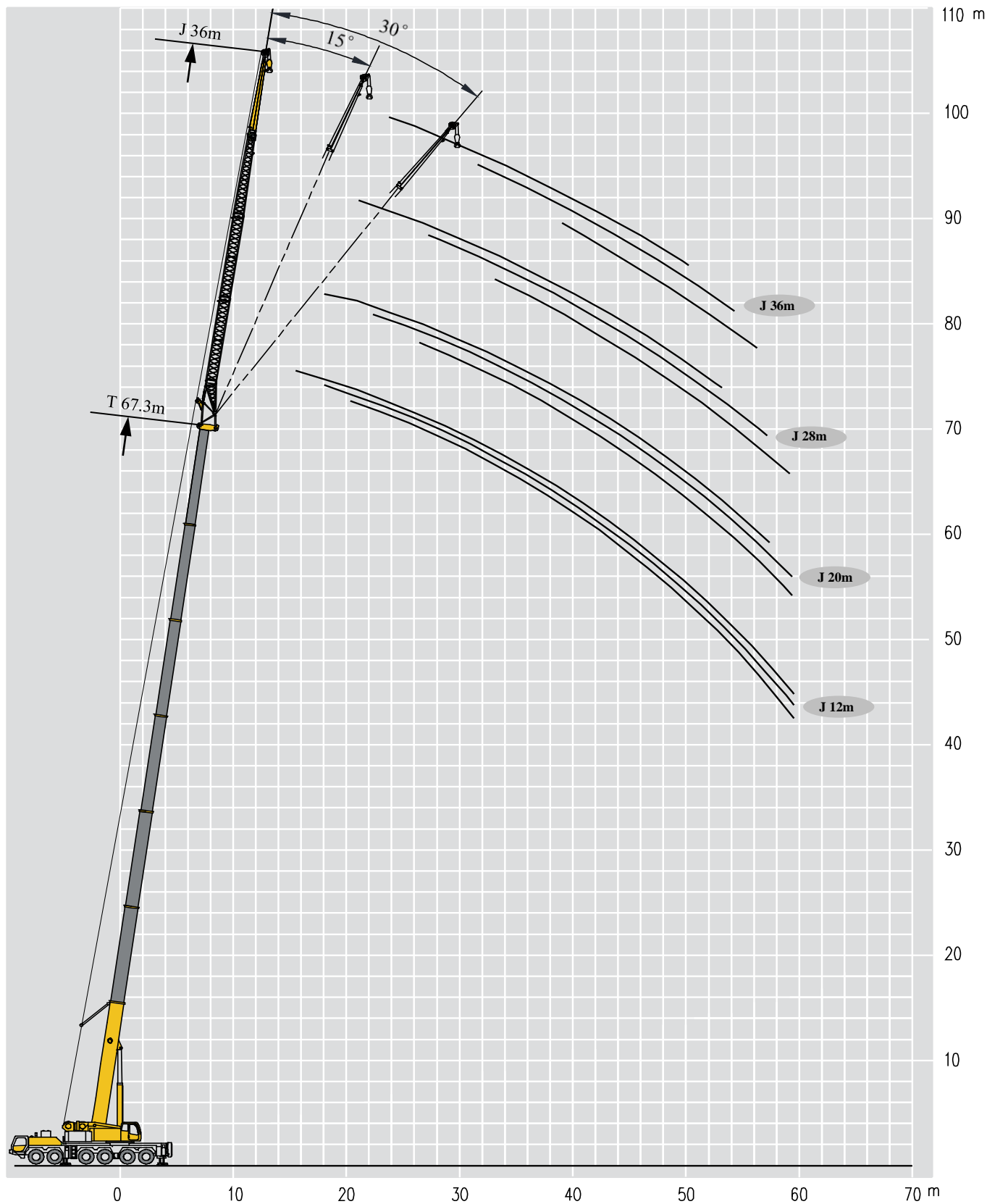
														
	31.4m	35.9m	35.9m	35.9m	40.4m	40.4m	40.4m	44.9m	44.9m	44.9m	49.4m	49.4m		
4.5	116													4.5
5	88													5
6	52.1	60.2	56.7	53.6										6
7	35.2	42.2	39.2	36.6	43.3	40.7	37.8							7
8	25.6	31.6	29.1	26.8	32.7	30.3	27.8	33.2	30	29.1				8
9	19.3	24.8	22.5	20.3	25.8	23.6	21.3	26.3	23.3	22.6	25.3	23.3		9
10	14.8	20.1	17.8	15.8	21.1	19	16.8	21.6	18.6	18	20.5	18.6		10
12	8.9	13.8	11.6	9.9	14.6	12.8	10.6	15.1	12.4	11.8	14.1	12.5		12
14	5.2	9.9	7.9	6	10.6	8.9	7	11	8.5	8	10.1	8.5		14
16	2.7	7.2	5.2	3.6	8	6.2	4.4	8.4	5.9	5.4	7.5	5.9		16
18		5.2	3.2	1.6	6	4.2	2.5	6.4	4	3.3	5.5	4		18
20		3.7	1.8		4.4	2.7	1	4.7	2.5	2	4	2.5		20
22		2.5			3.2	1.6		3.6	1.3		2.7	1.3		22
24		1.5			2.2			2.6			1.8			24
26					1.5			1.8			1			26
28								1.1						28
组合code	211000	011111	111110	211100	011112	111111	211110	011122	121111	211111	111122	122111	组合code	

														
	49.4m	53.9m	53.9m	53.9m	58.4m	58.4m	58.4m	62.8m	62.8m	67.3m	72m			
9	22.3													9
10	17.6	20.6	19	17.8										10
12	11.5	14.4	12.8	11.8	17	16	14.9	13.5	12.3					12
14	7.7	10.4	8.9	8	12	11	10	9.6	8.5	8.8	8.4			14
16	5	7.7	6.2	5.2	8.8	7.9	6.9	7	5.9	6.2	5.9			16
18	3.2	5.7	4.2	3.3	6.5	5.5	4.5	5	4	4.4	4.2			18
20	1.8	4	2.7	2	4.7	3.8	2.8	3.7	2.5	2.8	2.7			20
22		3	1.6		3.3	2.6	1.6	2.5	1.3	1.8	1.8			22
24		2			2.2	1.5		1.5						24
26		1.1			1.5									26
组合code	221111	111222	122211	222111	112222	122221	222211	122222	222221	222222	333333	组合code		



# 起升高度曲线图 Lifting height chart

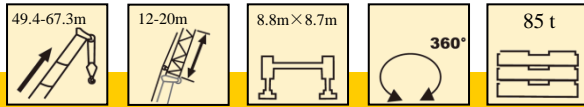
副臂  
Jib



# 起重性能表

## Lifting capacities

T 49.4~67.3m



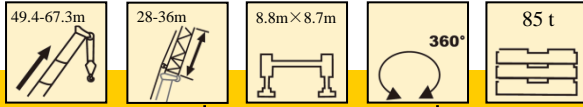
	49.4m			53.9m			58.4m			62.8m			67.3m			
	12m			12m			12m			12m			12m			
	0°	15°	30°	0°	15°	30°	0°	15°	30°	0°	15°	30°	0°	15°	30°	
12	12.0			12.0						12.0						12
14	12.0	11.8		12.0	12.0		12.0			12.0						14
16	12.0	11.2	8.8	12.0	11.4	8.8	12.0	11.6		12.0	11.6		11.3			16
18	11.8	10.8	8.4	11.6	11.0	8.6	11.9	11.0	8.6	11.7	11.1		11.0	10.8		18
20	11.4	10.4	8.0	11.3	10.6	8.2	11.1	10.6	8.2	10.4	10.1	8.2	10.6	10.2	8.2	20
22	10.6	10.0	7.8	10.6	10.1	8.0	9.9	9.6	8.0	9.3	9.1	8.0	9.2	9.1	8.0	22
24	9.9	9.3	7.6	9.9	9.5	7.6	9.0	8.8	7.8	8.3	8.3	7.8	8.3	8.2	7.8	24
26	9.1	8.8	7.4	9.3	8.9	7.4	8.2	8.0	7.6	7.5	7.5	7.4	7.4	7.5	7.3	26
28	8.6	8.3	7.2	8.5	8.3	7.2	7.4	7.3	7.1	6.7	6.7	6.7	6.7	6.7	6.7	28
30	8.1	7.8	7.0	7.8	7.8	7.0	6.8	6.6	6.6	6.1	6.1	6.0	6.1	6.1	6.1	30
32	7.5	7.3	6.8	7.3	7.1	6.8	6.1	6.1	6.1	5.5	5.5	5.4	5.4	5.4	5.5	32
34	7.1	7.0	6.6	6.7	6.6	6.5	5.7	5.6	5.5	5.1	5.0	5.0	4.9	4.9	5.0	34
36	6.8	6.6	6.4	6.2	6.1	6.1	5.2	5.2	5.1	4.6	4.7	4.6	4.5	4.5	4.5	36
38	6.3	6.2	6.3	5.7	5.7	5.6	4.8	4.8	4.7	4.1	4.1	4.2	4.0	4.1	4.1	38
40	6.0	6.0	6.0	5.3	5.3	5.2	4.4	4.4	4.4	3.8	3.8	3.8	3.6	3.7	3.7	40
42	5.7	5.7	5.8	4.9	4.9	4.8	4.0	4.0	4.1	3.5	3.4	3.5	3.3	3.3	3.4	42
44	5.4	5.4	5.5	4.6	4.5	4.5	3.7	3.7	3.7	3.2	3.2	3.1	2.9	3.0	3.0	44
46	5.2	5.1	5.2	4.3	4.3	4.2	3.5	3.5	3.4	2.8	2.9	2.9	2.6	2.7	2.7	46
48	5.0	4.9	4.9	4.0	4.0	4.0	3.2	3.2	3.2	2.5	2.6	2.6	2.3	2.5	2.4	48
50	4.7	4.7	2.4	3.7	3.7	3.7	2.9	2.9	2.9	2.3	2.4	2.3	2.1	2.2	2.2	50
52				3.5	3.4	3.4	2.6	2.6	2.7	2.1	2.1	2.1	1.9	1.9	2.0	52
54				3.2	3.2	1.6	2.4	2.4	2.5	1.9	1.9	1.9	1.7	1.6	1.7	54
56							2.2	2.2	2.3	1.7	1.7	1.7	1.4	1.5	1.5	56
58										1.5	1.5	1.5	1.3	1.3	1.3	58
60										1.3	1.3	1.3	1.1	1.1	1.1	60
组合 code	221111			222111			222211			222221			222222			组合 code

	49.4m			53.9m			58.4m			62.8m			67.3m			
	20m			20m			20m			20m			20m			
	0°	15°	30°	0°	15°	30°	0°	15°	30°	0°	15°	30°	0°	15°	30°	
14	8.0			8.1			8.5									14
16	7.6			7.7			8.2			9						16
18	7.3			7.4	5.6		7.7			8.5			8			18
20	7.0	5.2		7.1	5.4		7.4	5.4		8	5.4		7.6			20
22	6.6	5.2		6.8	5.2	4.2	7.0	5.2		7.6	5.2		7.2	5.4		22
24	6.2	5.0	4.2	6.4	5.0	4.2	6.6	5.0	4.2	7.3	5.2	4.2	6.8	5.2	4.2	24
26	6.0	4.8	4.0	6.2	4.8	4.0	6.4	5.0	4.0	6.7	5.0	4.0	6.6	5.0	4.0	26
28	5.6	4.6	4.0	5.8	4.6	4.0	6.0	4.8	4.0	6.1	4.8	4.0	6.2	4.8	4.0	28
30	5.4	4.4	3.8	5.6	4.6	3.8	5.8	4.6	4.0	5.6	4.6	4.0	5.6	4.8	4.0	30
32	5.2	4.4	3.8	5.4	4.4	3.8	5.6	4.4	3.8	5.1	4.6	3.8	5.0	4.6	3.8	32
34	5.0	4.2	3.6	5.2	4.2	3.8	5.1	4.4	3.8	4.5	4.4	3.8	4.5	4.4	3.8	34
36	4.8	4.0	3.6	5.0	4.2	3.6	4.7	4.2	3.8	4.1	4.1	3.8	4.2	4.1	3.8	36
38	4.6	4.0	3.6	4.8	4.0	3.6	4.3	4.2	3.6	3.7	3.9	3.6	3.8	3.7	3.6	38
40	4.4	3.8	3.6	4.6	4.0	3.6	3.9	3.9	3.6	3.4	3.5	3.5	3.4	3.4	3.5	40
42	4.4	3.8	3.4	4.3	3.8	3.4	3.6	3.6	3.6	3.1	3.2	3.2	2.9	3.0	3.1	42
44	4.2	3.8	3.4	4.1	3.8	3.4	3.3	3.4	3.3	2.8	2.9	2.9	2.7	2.8	2.9	44
46	4.0	3.6	3.4	3.7	3.7	3.4	3.0	3.1	3.1	2.6	2.6	2.6	2.4	2.5	2.6	46
48	4.0	3.6	3.4	3.4	3.5	3.4	2.7	2.8	2.8	2.3	2.4	2.4	2.1	2.2	2.3	48
50	3.8	3.4	3.4	3.3	3.2	3.2	2.6	2.6	2.6	2.0	2.1	2.2	1.9	2.0	2.1	50
52	3.7	3.4	3.2	3.0	3.0	3.0	2.3	2.3	2.4	1.8	1.9	1.9	1.7	1.8	1.9	52
54	3.5	3.4	3.2	2.7	2.8	2.8	2.1	2.1	2.2	1.6	1.7	1.8	1.4	1.6	1.6	54
56	3.4	3.3	3.2	2.6	2.6	2.6	1.9	2.0	2.0	1.4	1.5	1.6	1.2	1.4	1.4	56
58	3.2	3.2	1.8	2.4	2.4	2.4	1.8	1.8	1.8	1.2	1.3	1.4	1.1	1.2	1.2	58
60				2.2	2.2	2.3	1.6	1.6	1.7	1.1	1.2	1.2		1.0	1.0	60
62							1.4	1.5	1.4		1.0	1.1				62
组合 code	221111			222111			222211			222221			222222			组合 code

# 起重性能表

## Lifting capacities

T 49.4~67.3m



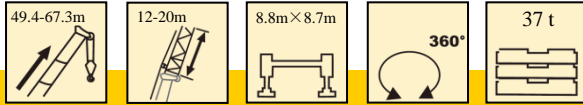
	49.4m			53.9m			58.4m			62.8m			67.3m			
	28m			28m			28m			28m			28m			
	0°	15°	30°	0°	15°	30°	0°	15°	30°	0°	15°	30°	0°	15°	30°	
16	5.4			5.6			5.6									16
18	5.0			5.2			5.4				5.4					18
20	4.8			5.0			5.0				5.2			5.2		20
22	4.6	3.6		4.6	3.6		4.8				4.8			5.0		22
24	4.4	3.4		4.4	3.4		4.6	3.4			4.6	3.4		4.6		24
26	4.2	3.2		4.2	3.4		4.4	3.4			4.4	3.4		4.4	3.4	26
28	4.0	3.2	2.6	4.0	3.2	2.6	4.2	3.2	2.6		4.2	3.2		4.2	3.2	28
30	3.8	3.0	2.6	3.8	3.0	2.6	4.0	3.2	2.6		4.0	3.2	2.6	4.2	3.2	30
32	3.6	3.0	2.6	3.8	3.0	2.6	3.8	3.0	2.6		3.8	3.0	2.6	4.0	3.0	32
34	3.4	2.8	2.4	3.6	3.0	2.4	3.6	3.0	2.4		3.8	3.0	2.6	3.8	3.0	34
36	3.4	2.8	2.4	3.4	2.8	2.4	3.6	2.8	2.4		3.4	3.0	2.4	3.6	3.0	36
38	3.2	2.6	2.4	3.2	2.8	2.4	3.4	2.8	2.4		3.0	2.8	2.4	3.3	2.8	38
40	3.0	2.6	2.2	3.2	2.6	2.4	3.2	2.8	2.4		2.8	2.8	2.4	3.0	2.8	40
42	3.0	2.6	2.2	3.0	2.6	2.2	3.2	2.6	2.4		2.5	2.6	2.4	2.7	2.8	42
44	2.8	2.4	2.2	3.0	2.6	2.2	2.9	2.6	2.2		2.2	2.3	2.2	2.3	2.6	44
46	2.8	2.4	2.2	2.8	2.4	2.2	2.7	2.6	2.2		2.0	2.1	2.2	2.1	2.3	46
48	2.6	2.4	2.2	2.8	2.4	2.2	2.4	2.4	2.2		1.7	1.9	2.0	1.8	2.0	48
50	2.6	2.4	2.2	2.6	2.4	2.2	2.1	2.2	2.2		1.5	1.6	1.7	1.6	1.8	50
52	2.6	2.2	2.0	2.6	2.4	2.2	2.0	2.0	2.1		1.3	1.5	1.6	1.4	1.6	52
54	2.4	2.2	2.0	2.4	2.2	2.0	1.7	1.8	1.9		1.2	1.3	1.4	1.2	1.4	54
56	2.4	2.2	2.0	2.2	2.2	2.0	1.6	1.7	1.7			1.1	1.2		1.1	56
58	2.4	2.2	2.0	2.0	2.0	2.0	1.4	1.5	1.5				1.0		1.0	58
60	2.2	2.0	2.0	1.8	1.9	1.9	1.2	1.3	1.4							60
62	2.2	2.0	2.0	1.6	1.7	1.7	1.1	1.2	1.2							62
64	2.2	2.0	2.0	1.5	1.5	1.6		1.0	1.1							64
66	2.0	2.0	1.4	1.4	1.4	1.4										66
68				1.3	1.3	1.3										68
组合 code	221111			222111			222211			222221			222222			组合 code

	49.4m			53.9m			58.4m			62.8m			67.3m			
	36m			36m			36m			36m			36m			
	0°	15°	30°	0°	15°	30°	0°	15°	30°	0°	15°	30°	0°	15°	30°	
18	3.8			4.0			4.0									18
20	3.6			3.8			3.8				3.8					20
22	3.4			3.6			3.6				3.6			3.6		22
24	3.2			3.4			3.4				3.4			3.6		24
26	3.2	2.4		3.2			3.2				3.4			3.4		26
28	3.0	2.4		3.0	2.4		3.2	2.4			3.2	2.4		3.2		28
30	2.8	2.2		3.0	2.4		3.0	2.4			3.0	2.4		3.0	2.4	30
32	2.8	2.2		2.8	2.2		2.8	2.2			3.0	2.2		3.0	2.4	32
34	2.6	2.2	1.8	2.6	2.2	1.8	2.8	2.2	1.8		2.8	2.2		2.8	2.2	34
36	2.4	2.0	1.8	2.6	2.2	1.8	2.6	2.2	1.8		2.6	2.2	1.8	2.8	2.2	36
38	2.4	2.0	1.8	2.4	2.0	1.8	2.6	2.0	1.8		2.6	2.0	1.8	2.6	2.2	38
40	2.4	2.0	1.6	2.4	2.0	1.8	2.4	2.0	1.8		2.6	2.0	1.8	2.6	2.0	40
42	2.2	1.8	1.6	2.2	2.0	1.6	2.4	2.0	1.6		2.4	2.0	1.6	2.3	2.0	42
44	2.2	1.8	1.6	2.2	1.8	1.6	2.2	2.0	1.6		2.1	2.0	1.6	2.0	2.0	44
46	2.0	1.8	1.6	2.2	1.8	1.6	2.2	1.8	1.6		1.9	1.8	1.6	1.8	2.0	46
48	2.0	1.8	1.6	2.0	1.8	1.6	2.0	1.8	1.6		1.6	1.8	1.6	1.6	1.8	48
50	2.0	1.6	1.6	2.0	1.8	1.6	1.8	1.8	1.6		1.4	1.6	1.6	1.3	1.6	50
52	1.8	1.6	1.4	2.0	1.6	1.4	1.6	1.7	1.6		1.2	1.4	1.6	1.1	1.3	52
54	1.8	1.6	1.4	1.8	1.6	1.4	1.4	1.6	1.4		1.1	1.2	1.4		1.2	54
56	1.8	1.6	1.4	1.8	1.6	1.4	1.3	1.4	1.4			1.1	1.2		1.0	56
58	1.8	1.6		1.6	1.6		1.0	1.2	1.3				1.0			58
60	1.6	1.4		1.5	1.5			1.1	1.2							60
62	1.6	1.4		1.3	1.4				1.0							62
64	1.6	1.4		1.2	1.2											64
66	1.6			1.1	1.1											66
68	1.4															68
70	1.4															70
72	1.3															72
组合 code	221111			222111			222211			222221			222222			组合 code

# 起重性能表

## Lifting capacities

T 49.4~67.3m



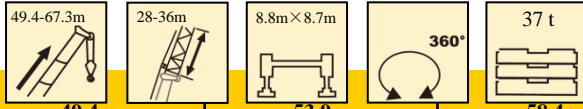
	49.4m			53.9m			58.4m			62.8m			67.3m			
	12m			12m			12m			12m			12m			
	0°	15°	30°	0°	15°	30°	0°	15°	30°	0°	15°	30°	0°	15°	30°	
12	12.0			12.0						12.0						12
14	12.0	11.8		12.0	12.0		12.0			12.0						14
16	12.0	11.2	8.8	12.0	11.4	8.8	12.0	11.6		12.0	11.6		11.3			16
18	11.8	10.8	8.4	11.6	11.0	8.6	11.9	11.0	8.6	11.7	11.1		11.0	10.8		18
20	11.4	10.4	8.0	11.3	10.6	8.2	11.1	10.6	8.2	10.4	10.1	8.2	10.6	10.2	8.2	20
22	10.6	10.0	7.8	10.6	10.1	8.0	9.9	9.6	8.0	9.3	9.1	8.0	9.2	9.1	8.0	22
24	9.9	9.3	7.6	9.9	9.5	7.6	9.0	8.8	7.8	8.3	8.3	7.8	8.3	8.2	7.8	24
26	9.1	8.8	7.4	9.3	8.9	7.4	8.2	8.0	7.6	7.5	7.5	7.4	7.4	7.5	7.3	26
28	8.6	8.3	7.2	8.5	8.3	7.2	7.4	7.3	7.1	6.7	6.7	6.7	6.7	6.7	6.7	28
30	8.1	7.8	7.0	7.8	7.8	7.0	6.8	6.6	6.6	6.1	6.1	6.0	6.1	6.1	6.1	30
32	7.5	7.3	6.8	7.3	7.1	6.8	6.1	6.1	6.1	5.5	5.5	5.4	5.4	5.4	5.5	32
34	6.9	7.0	6.6	6.7	6.6	6.5	5.7	5.6	5.5	5.1	5.0	5.0	4.9	4.9	5.0	34
36	5.9	6.4	6.4	5.9	6.1	6.1	5.2	5.2	5.1	4.6	4.7	4.6	4.5	4.5	4.5	36
38	5.1	5.5	5.8	5.0	5.5	5.6	4.8	4.8	4.7	4.1	4.1	4.2	4.0	4.1	4.1	38
40	4.3	4.7	5.0	4.3	4.7	5.1	4.4	4.4	4.4	3.8	3.8	3.8	3.6	3.7	3.7	40
42	3.7	4.0	4.3	3.6	4.0	4.3	3.7	4.0	4.1	3.5	3.4	3.5	3.3	3.3	3.4	42
44	3.1	3.4	3.6	3.0	3.4	3.7	3.1	3.5	3.7	3.2	3.2	3.1	2.9	3.0	3.0	44
46	2.5	2.8	3.0	2.5	2.8	3.1	2.6	2.9	3.2	2.7	2.9	2.9	2.6	2.7	2.7	46
48	2.0	2.3	2.4	2.0	2.3	2.5	2.1	2.4	2.6	2.2	2.5	2.6	2.3	2.5	2.4	48
50	1.6	1.8	1.9	1.6	1.8	2.0	1.7	1.9	2.1	1.8	2.1	2.3	2.1	2.2	2.2	50
52				1.2	1.4	1.5	1.3	1.5	1.7	1.4	1.6	1.8	1.7	1.9	2.0	52
54									1.3		1.3	1.4	1.3	1.6	1.7	54
56														1.2	1.4	56
组合 code	221111			222111			222211			222221			222222			组合 code

	49.4m			53.9m			58.4m			62.8m			67.3m			
	20m			20m			20m			20m			20m			
	0°	15°	30°	0°	15°	30°	0°	15°	30°	0°	15°	30°	0°	15°	30°	
14	8			8.1			8.5									14
16	7.6			7.7			8.2			9						16
18	7.3			7.4	5.6		7.7			8.5			8			18
20	7.0	5.2		7.1	5.4		7.4	5.4		8	5.4		7.6			20
22	6.6	5.2		6.8	5.2	4.2	7.0	5.2		7.6	5.2		7.2	5.4		22
24	6.2	5.0	4.2	6.4	5.0	4.2	6.6	5.0	4.2	7.3	5.2	4.2	6.8	5.2		24
26	6.0	4.8	4.0	6.2	4.8	4.0	6.4	5.0	4.0	6.7	5.0	4.0	6.6	5.0	4.0	26
28	5.6	4.6	4.0	5.8	4.6	4.0	6.0	4.8	4.0	6.1	4.8	4.0	6.2	4.8	4.0	28
30	5.4	4.4	3.8	5.6	4.6	3.8	5.8	4.6	4.0	5.6	4.6	4.0	5.6	4.8	4.0	30
32	5.2	4.4	3.8	5.4	4.4	3.8	5.6	4.4	3.8	5.1	4.6	3.8	5.0	4.6	3.8	32
34	5.0	4.2	3.6	5.2	4.2	3.8	5.1	4.4	3.8	4.5	4.4	3.8	4.5	4.4	3.8	34
36	4.8	4.0	3.6	5.0	4.2	3.6	4.7	4.2	3.8	4.1	4.1	3.8	4.2	4.1	3.8	36
38	4.6	4.0	3.6	4.8	4.0	3.6	4.3	4.2	3.6	3.7	3.9	3.6	3.8	3.7	3.6	38
40	4.4	3.8	3.6	4.6	4.0	3.6	3.9	3.9	3.6	3.4	3.5	3.5	3.4	3.4	3.5	40
42	4.3	3.8	3.4	4.2	3.8	3.4	3.6	3.6	3.6	3.1	3.2	3.2	2.9	3.0	3.1	42
44	3.7	3.8	3.4	3.6	3.8	3.4	3.3	3.4	3.3	2.8	2.9	2.9	2.7	2.8	2.9	44
46	3.1	3.6	3.4	3.0	3.6	3.4	3.0	3.1	3.1	2.6	2.6	2.6	2.4	2.5	2.6	46
48	2.6	3.1	3.4	2.6	3.1	3.4	2.6	2.8	2.8	2.3	2.4	2.4	2.1	2.2	2.3	48
50	2.2	2.6	3.0	2.1	2.6	3.0	2.1	2.6	2.6	2.0	2.1	2.2	1.9	2.0	2.1	50
52	1.8	2.2	2.5	1.7	2.1	2.5	1.7	2.2	2.4	1.8	1.9	1.9	1.7	1.8	1.9	52
54	1.4	1.8	2.0	1.3	1.7	2.0	1.3	1.8	2.1	1.4	1.7	1.8	1.4	1.6	1.6	54
56		1.4	1.6		1.3	1.6		1.4	1.7	1.0	1.5	1.6	1.2	1.4	1.4	56
58			1.2			1.2			1.3		1.1	1.4	1.1	1.2	1.2	58
60										1.1	1.2	1.1		1.0	1.0	60
62											1.0	1.1				62
组合 code	221111			222111			222211			222221			222222			组合 code

# 起重性能表

## Lifting capacities

T 49.4~67.3m

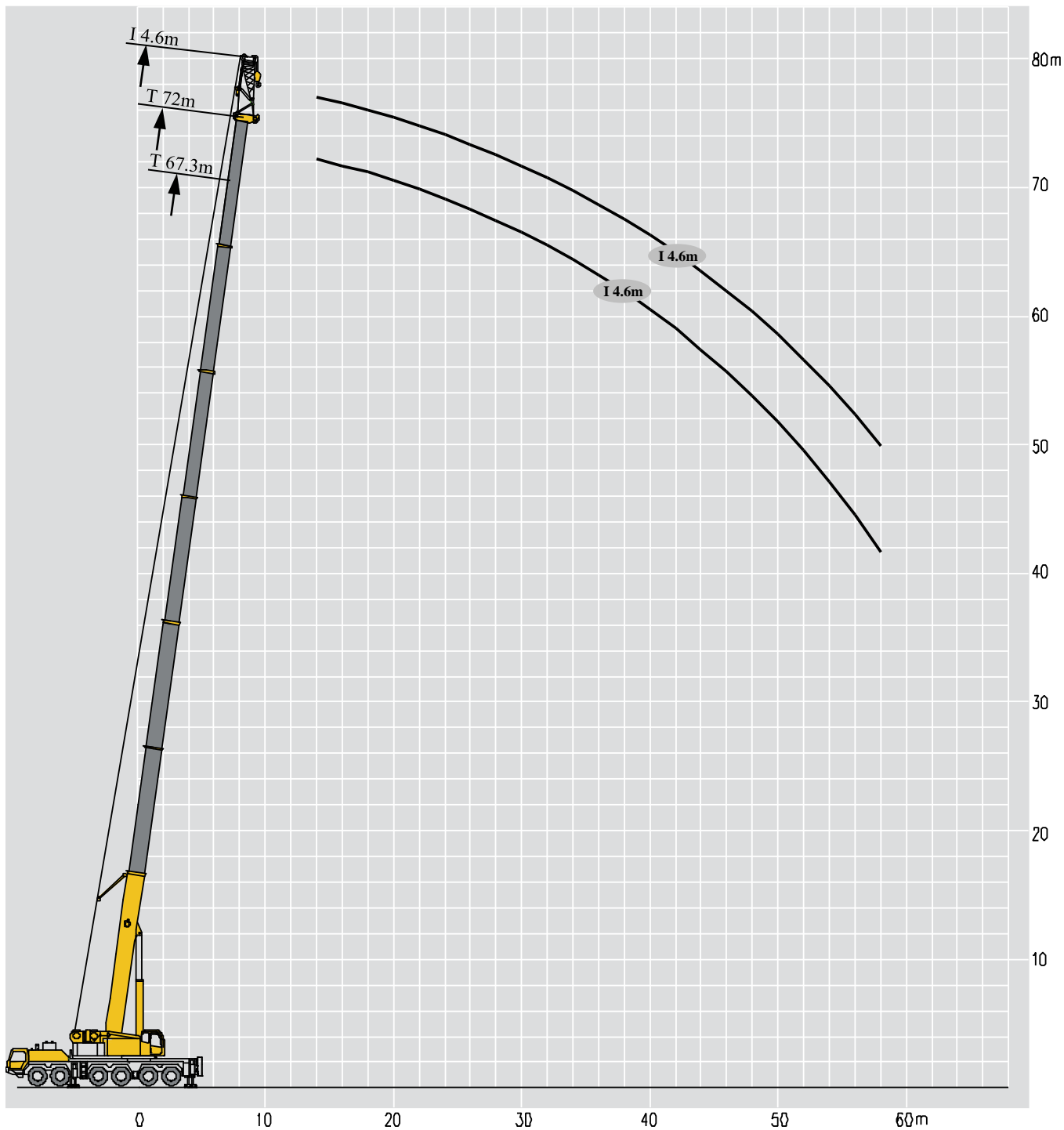


	49.4m			53.9m			58.4m			62.8m			67.3m			
	28m			28m			28m			28m			28m			
	0°	15°	30°	0°	15°	30°	0°	15°	30°	0°	15°	30°	0°	15°	30°	
16	5.4			5.6			5.6									16
18	5.0			5.2			5.4			5.4						18
20	4.8			5.0			5.0			5.2			5.2			20
22	4.6	3.6		4.6	3.6		4.8			4.8			5.0			22
24	4.4	3.4		4.4	3.4		4.6	3.4		4.6	3.4		4.6			24
26	4.2	3.2		4.2	3.4		4.4	3.4		4.4	3.4		4.4	3.4		26
28	4.0	3.2	2.6	4.0	3.2	2.6	4.2	3.2	2.6	4.2	3.2		4.2	3.2		28
30	3.8	3.0	2.6	3.8	3.0	2.6	4.0	3.2	2.6	4.0	3.2	2.6	4.2	3.2		30
32	3.6	3.0	2.6	3.8	3.0	2.6	3.8	3.0	2.6	3.8	3.0	2.6	4.0	3.0	2.6	32
34	3.4	2.8	2.4	3.6	3.0	2.4	3.6	3.0	2.4	3.8	3.0	2.6	3.8	3.0	2.6	34
36	3.4	2.8	2.4	3.4	2.8	2.4	3.6	2.8	2.4	3.4	3.0	2.4	3.6	3.0	2.4	36
38	3.2	2.6	2.4	3.2	2.8	2.4	3.4	2.8	2.4	3.0	2.8	2.4	3.3	2.8	2.4	38
40	3.0	2.6	2.2	3.2	2.6	2.4	3.2	2.8	2.4	2.8	2.8	2.4	3.0	2.8	2.4	40
42	3.0	2.6	2.2	3.0	2.6	2.2	3.2	2.6	2.4	2.5	2.6	2.4	2.7	2.8	2.4	42
44	2.8	2.4	2.2	3.0	2.6	2.2	2.9	2.6	2.2	2.2	2.3	2.2	2.3	2.6	2.2	44
46	2.8	2.4	2.2	2.8	2.4	2.2	2.7	2.6	2.2	2.0	2.1	2.2	2.1	2.3	2.2	46
48	2.6	2.4	2.2	2.8	2.4	2.2	2.4	2.4	2.2	1.7	1.9	2.0	1.8	2.0	2.1	48
50	2.6	2.4	2.2	2.5	2.4	2.2	2.1	2.2	2.2	1.5	1.6	1.7	1.6	1.8	1.9	50
52	2.2	2.2	2.0	2.1	2.4	2.2	2.0	2.0	2.1	1.3	1.5	1.6	1.4	1.6	1.7	52
54	1.8	2.2	2.0	1.7	2.2	2.0	1.7	1.8	1.9	1.2	1.3	1.4	1.2	1.4	1.5	54
56	1.5	2.0	2.0	1.4	2.0	2.0	1.3	1.7	1.7		1.1	1.2		1.1	1.3	56
58	1.2	1.7	2.0		1.6	2.0	1.0	1.5	1.5			1.0		1.0	1.1	58
60		1.3	1.7		1.2	1.7	1.2	1.2	1.4						1.0	60
62			1.3			1.3	1.1	1.2	1.2							62
64								1.0	1.0							64
组合 code	221111			222111			222211			222221			222222			组合 code

	49.4m			53.9m			58.4m			62.8m			67.3m			
	36m			36m			36m			36m			36m			
	0°	15°	30°	0°	15°	30°	0°	15°	30°	0°	15°	30°	0°	15°	30°	
18	3.8			4.0			4.0									18
20	3.6			3.8			3.8			3.8						20
22	3.4			3.6			3.6			3.6			3.6			22
24	3.2			3.4			3.4			3.4			3.6			24
26	3.2	2.4		3.2	2.4		3.2			3.4			3.4			26
28	3.0	2.4		3.0	2.4		3.2	2.4		3.2	2.4		3.2			28
30	2.8	2.2		3.0	2.4		3.0	2.4		3.0	2.4		3.0	2.4		30
32	2.8	2.2		2.8	2.2		2.8	2.2		3.0	2.2		3.0	2.4		32
34	2.6	2.2	1.8	2.6	2.2	1.8	2.8	2.2	1.8	2.8	2.2		2.8	2.2		34
36	2.4	2.0	1.8	2.6	2.2	1.8	2.6	2.2	1.8	2.6	2.2	1.8	2.8	2.2		36
38	2.4	2.0	1.8	2.4	2.0	1.8	2.6	2.0	1.8	2.6	2.0	1.8	2.6	2.2	1.8	38
40	2.4	2.0	1.6	2.4	2.0	1.8	2.4	2.0	1.8	2.6	2.0	1.8	2.6	2.0	1.8	40
42	2.2	1.8	1.6	2.2	2.0	1.6	2.4	2.0	1.6	2.4	2.0	1.6	2.3	2.0	1.6	42
44	2.2	1.8	1.6	2.2	1.8	1.6	2.2	2.0	1.6	2.1	2.0	1.6	2.0	2.0	1.6	44
46	2.0	1.8	1.6	2.2	1.8	1.6	2.2	1.8	1.6	1.9	1.8	1.6	1.8	2.0	1.6	46
48	2.0	1.8	1.6	2.0	1.8	1.6	2.0	1.8	1.6	1.6	1.8	1.6	1.6	1.8	1.6	48
50	2.0	1.6	1.6	2.0	1.8	1.6	1.8	1.8	1.6	1.4	1.6	1.6	1.3	1.6	1.6	50
52	1.8	1.6	1.4	2.0	1.6	1.4	1.6	1.7	1.6	1.2	1.4	1.6	1.1	1.3	1.6	52
54	1.8	1.6	1.4	1.8	1.6	1.4	1.4	1.6	1.4	1.1	1.2	1.4		1.2	1.3	54
56	1.8	1.6	1.4	1.7	1.6	1.4	1.3	1.4	1.4		1.1	1.2		1.0	1.1	56
58	1.5	1.6		1.3	1.6	1.4	1.0	1.2	1.3			1.0			1.0	58
60	1.2	1.4		1.0	1.5	1.4		1.0	1.2							60
62		1.4		1.3	1.4	1.4			1.0							62
64		1.2		1.2	1.1	1.3										64
66				1.1	1.1	1.2										66
68						1.0										68
组合 code	221111			222111			222211			222221			222222			组合 code

# 起升高度曲线图 Lifting height chart

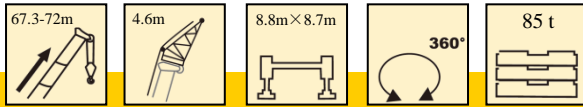
独立臂头  
Independent jib



# 起重性能表

## Lifting capacities

T 67.3~72m



	67.3m			72m			
	4.6m			4.6m			
	0°	15°	30°	0°	15°	30°	
14	11.4	9.8	6.4	10.4	9	5.4	14
16	11.4	9.6	6	10.4	8.8	5	16
18	11.1	9.6	5.6	10.1	8.8	4.6	18
20	10.8	9.4	5.2	9.8	8.6	4.2	20
22	10.6	9.2	4.8	9.6	8.4	3.8	22
24	10.4	8.4	4.6	9.4	7.6	3.6	24
26	10.2	7.8	4.4	9.2	7	3.4	26
28	10	7.2	4	9	6.4	3	28
30	9.8	6.6	3.8	8.8	5.8	2.8	30
32	9.5	6.2	3.8	8.6	5.4	2.8	32
34	8.8	5.5	3.4	8.4	5	2.6	34
36	8.2	4.7	3	7.8	4.3	2.4	36
38	7.7	4.3	2.6	7.4	4	2.2	38
40	7	4	2.5	6.6	3.7	2.2	40
42	6.4	3.7	2.4	6.2	3.5	2	42
44	5.7	3.4	2.3	5.6	3.3	2	44
46	5.3	3.2	2.1	5.3	3.1	1.8	46
48	5.1	3	2	4.9	3	1.8	48
50	4.8	2.7	1.9	4.6	2.8	1.7	50
52	4.5	2.5	1.8	4.3	2.7	1.5	52
54	4.1	2.2	1.6	4	2.6	1.3	54
56	3.7	2	1.5	3.5	2.2	1.1	56
58	3.4	1.6	1	3.2	2		58
组合code	222222			333333			组合code

# 符号标识

## Description of symbols

	支腿 Outriggers		车桥 Axle
	工作幅度 Radius		行驶速度 Driving speed
	吊臂仰角 Boom angle		爬坡能力 Grade ability
	吊臂长度 Boom length		轮胎 Tires
	吊钩 Hook block		平衡重 Counterweight
	360°全回转 360° rotation		上车 Superstructure
	卷扬 Winch		底盘 Chassis
	主臂 Boom		固定副臂 Fixed jib
	独立臂头 Independent jib head		



## 注意事项

### Notes

1. 表中额定总起重量值，是在平整的坚固地面上本起重机能够保证的最大总起重量，包括吊钩和吊具的重量，所以为了估算重物重量，必须减去上述的装置重量。
2. 表中的工作幅度为起吊重物离地时起重物到起重机会转轴线的水平距离，是包括起重臂变形量在内的实际值，因而起吊前应考虑起重臂变形量。
3. 只允许在5级(瞬时风速14.1m/s，风压125N/m<sup>2</sup>)风以下进行作业。
4. 吊重前操作者必须对物体的重量和工作范围了解后选择合适的作业工况，严禁超出表中的数值。幅度及臂长在相邻两个数值之间时，应依据两个数值中较小值确定起重作业。
5. 应按主臂仰角范围作业，即使是空载，也不应使主臂仰角处于范围外，谨防整机倾翻。
6. 表中的主臂长度应要按照每节臂的伸缩要求进行伸出。

1. The total rated loads given in the rated load charts are the maximum lifting capacity when the crane is set up on firm and level ground, which includes the weight of the hook block and slings. The weight of above-mentioned devices should be deducted from the rated lifting load.
2. The working radius shown in the rated load charts is the radius when the load is lifted off the ground, and it is the actual value including loaded boom deflection. Take boom deflection into consideration before beginning a lifting operation.
3. A lifting operation is permissible only when the wind force is below grade 5 (instantaneous wind speed is 14.1 m/s, wind pressure is 125 N/m<sup>2</sup>).
4. Before beginning lifting operation, the operator should know the weight of the load to be lifted and its working range, and then select proper working conditions. Never operate the crane beyond the limit shown in the chart. Use the lower value from the chart when the boom length or working radius is between the range of values.
5. Observe the boom angle limit. Never operate the crane with the boom angle beyond the recommended limit even if a load is not being carried. Otherwise, the crane will tip.
6. The boom should be extended according to the telescoping code shown by digits, which means the percentage of boom sections extended.



地址：中国江苏徐州市铜山路165号

Add : No.165 Tongshan Road Xuzhou Jiangsu China

电话(Tel) : +86-516-83462242/83462350

质量监督电话(Quality Inquiry Tel) : +86-516-87888268

备件电话(Spare Parts Tel) : +86-516-83461542

邮编(Post Code) : 221004

网址(Web) : [www.xcmg.com/qizhongji](http://www.xcmg.com/qizhongji)

**服务热线 Service Tel**

**400-110-9999**

**400-001-5678**



本印刷品不属于合同。出于产品不断改进的需要，我们保留对产品型号、参数、配置进行变更的权利，恕不另行通知。图片仅供参考，具体产品以实物为准。图片中产品可能并非标准配置，部分部件可能需要另行购置。办理牌照和上路行驶需遵守当地法规。

This print does not belong to the contract. We reserve the right to modify the design (such as product model, parameters and configuration) without notice for improvement. The pictures are just for reference. The product in the picture may not be standard configuration. Some parts need to be purchased separately. Conform to the local laws for license application and road traveling.