



All Rights Reserved

Materials and specifications are subject to change without notice.  
Featured machines in photos may include additional equipment.  
See your XCMG dealer for available options.

"XCMG", "WWW.XCMG.COM", "XCMG For Your Success",  
as well as the corporate and product identity used herein,  
are trademarks of XCMG and may not be used without permission.



# XE470C

## HYDRAULIC EXCAVATOR

[www.xcmg.com](http://www.xcmg.com)

**XCMG Regional Departments:**

Europe	(+86-516) 87739238 87739271 87739228	Central Asia	(+86-516) 87739218 87739239 87739510
West Asia & North Africa	(+86-516) 87739251 87739202 87739223	North America	(+86-516) 87739285 87739551 87739713
Asia-Pacific	(+86-516) 87739500 87739529 87739233	South America	(+86-516) 87739196 87739714 87739187
Africa	(+86-516) 87739501 87739222 87739709		

XUZHOU CONSTRUCTION MACHINERY GROUP IMP. & EXP. CO., LTD

Add: No.1, Tuolanshan Road, Xuzhou Economic Developing Zone, Jiangsu, China 221004

Fax: (+86-516) 87739230

E-mail: [export@xcmg.com](mailto:export@xcmg.com)

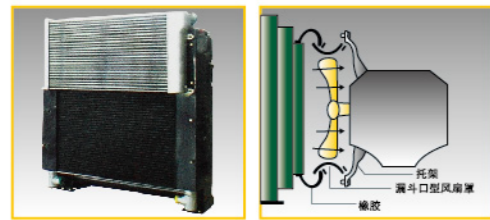
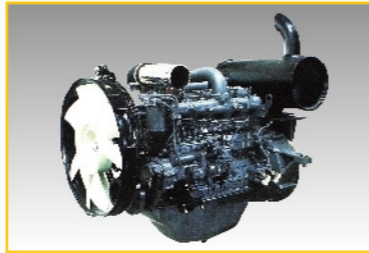




## 强劲动力、创造高效 Forceful Power, Create Efficiency

- 原装进口康明斯发动机, 功率强劲, 满足高效作业要求;
- 精确的匹配设计加上先进的节能控制, 使机器油耗少;
- 排放低, 满足欧 II 标准;
- 新型冷却风扇和大型消音器的采用, 使机器的噪音更低;
- 采用先进的涡轮增压技术, 增强机器的高原适应性;
- 自动预热系统, 提高机器低温工作能力;
- 再启动防止系统, 有效避免误操作, 提高机器的使用安全性。

- The imported original Cummins engine has a strong power, which can meet high efficient operational requirements;
- The exact matching design coupled with advanced energy-saving control make the machine has less fuel consumption;
- The machine has low emissions, which meets Europe II standard;
- The new cooling fan and large-scale adoption of silencer, so that the noise is reduced;
- The advanced turbocharger technology is used to enhance the adaptation of the machine on highland;
- The automatic preheating system can improve the working ability of the machine in low temperature;
- The re-start preventing system can avoid mistake operation and improve the safety of the machine.

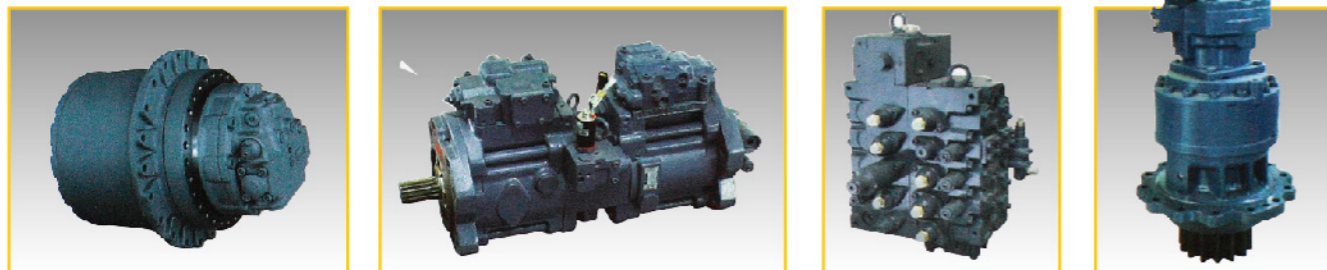


- 独特的漏斗型风扇罩, 大大提升发动机的进风量及系统散热能力, 保证机器连续效果高。
- Unique hopper opening type fan hood connecting with the engine, improve the ability of radiating, makes sure the machine can be continuous work effectively.

## 先进的液压系统 Advanced Hydraulic System

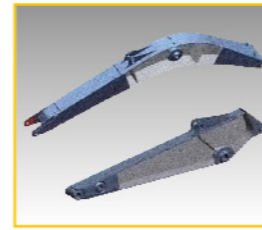
- **高端配置:** 液压泵、主阀、回转马达、行走马达、油缸、先导操纵阀等元件均采用国际知名品牌, 保证了产品的品质;
- 集成最新研究成果, 降低能耗, 响应速度更快, 效率更高;
- **动臂、斗杆锁定功能:** 防止动臂和斗杆的下沉, 延长其在中位的保持时间;
- **斗杆回油再生:** 使斗杆收回动作快速、平稳;
- **强劲及精确的回转控制:** 改进振动吸收特性, 确保回转停止动作更加精确及平稳; 通过提高扭矩储备, 给机器提供更加强劲的回转能力;
- **油缸带缓冲功能:** 动臂油缸和斗杆油缸设计有缓冲, 可以减少机器的振动和冲击, 降低噪音并延长油缸寿命;
- **双泵合流技术:** 增大主阀供给动臂、斗杆油缸的流量, 提升作业速度;
- **行走先导阀设置液压减振装置:** 机器行走启动和停止时更加平稳。

- **The high-end configurations:** hydraulic pump, main valve, rotary motor, travel motor, cylinder, pilot control valve and other components, are used international renowned brands, ensured the product quality;
- The integrated latest research results can reduce energy consumption, faster response and higher efficiency;
- **The locked function of the boom, arm:** to prevent the boom and arm sinking, to extend its time in the medium position;
- **The arm back oil regeneration:** the arm should be moved back fast and stable;
- **Strong and precise rotary control:** has improved the absorption characteristics of the vibration, to ensure the stop action of rotation more accurate and smooth by increasing the torque reserve, giving the machine more robust rotation ability;
- **The cylinder has a buffering function:** the boom cylinder and arm cylinder are designed with the buffer, which can reduce the machine vibration and shock, reduce noise and prolong tank life;
- **Double-pump and convergence technology:** this can increase the flow that the main valve supplies to the boom, the arm cylinder increase operating speed;
- **The hydraulic damping device is set on the walking pilot valve:** this can make the machine more smooth when it runs and stops.



## 加强型工作装置 Strengthened work installation

- **标配加强型动臂:** 动臂采用大截面、高刚度的箱形结构, 通过优化处理, 减少强度不利的焊接部位, 满足重载作业的要求。重要铰接部位全部采用锻件结构, 防止应力集中的同时, 提高强度。动臂根部强化设计, 通过加大轴套及增加板厚, 缓和应力, 提高耐久性。
- **斗杆:** 重要铰接部位采用锻件结构, 通过改变开状及板厚, 缓和应力, 提高耐久性。(可选配长斗杆或短斗杆)
- **衬套:** 动臂、斗杆销轴的连接部位, 采用高耐磨高强度性的衬套, 经久耐用。



- **Standard enhanced boom:** The boom is used with large cross-section, high-rigidity box-shaped structure, through optimizing procession, to reduce the negative intensity welding site, to meet the construction requirements of heavy-load operations; The important hinged parts are all forgings structure, to prevent improving the strength at the same time of focusing the stress. The strengthen design of the boom root, to enlarge the sleeve and increase the thickness of the plate to ease the stress, improving durability.
- **The arm:** The forging structure is used at the important hinging parts, through changing the shape and thickness of the plate for easing the stress and improving durability. (Optional long bucket rod or short arm)
- **The bushing:** The connecting parts of the boom and the arm pin, the high strength wear-resistance bush is used and can be used for a long time.

## 增加铲斗耐磨性 Strengthened bucket of anti-friction

- **增加铲斗耐磨性:** 铲斗切削板均采用特种耐磨钢板, 适合重载作业要求, 配上耐磨型斗齿、侧齿, 提高机器的使用性能。
- 使用加厚钢板及增加侧面加强板, 提高耐磨性。
- 采用平底铲斗, 进行平整作业时, 修整面整齐平坦。



- **To increase the wear resistance performance of the bucket:** The bucket cutting boards are made of special wear-resistant steel plate, which is suitable for heavy operational requirements, coupled with wear-resistant-type bucket teeth, side teeth, to improve the use performance of the machine.
- The thickness increased steel board and increase the side strengthens board, to improve wear resistance performance;
- The flat-bottomed bucket is used to carry out smooth operations; the trimming surface is tidy flat.

## 增强上部回转平台 Strengthened swing platform

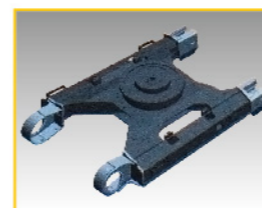
- 平台两边梁设计成 D 字型结构, 可抵抗外部强烈冲击。



- The frames the platform are designed in D-type can resist the serious impact outside.

## 强化底盘车架强度 Strengthened the intensity of chassis frame

- **强化底盘车架强度:** 改良履带架横截面形状的设计, 减少泥土堆积, 使托链轮更不易磨损, 提高机器的耐久性。
- 加大 X 型车架中箱形结构尺寸, 提高截面性能, 使机器更能够适应重负荷作业要求。



- **To strengthen the X-frame:** To improve the design of crawler frame cross-sectional shape, so that the soil around the track frame is less likely to pile up, the track carrying wheel is more difficult to wear, to improve the durability and dependability of the machine.
- To increase the size of the box-shaped structure in X-frame, improve the performance of section, so that the machine is more able to adapt to heavy-duty operational requirements.

## 增重型配重 Counterweight is increased

- **增重型配重:** 增加配重质量, 与同级别机型相比, 有明显的提高, 机器作业时稳定性更好。

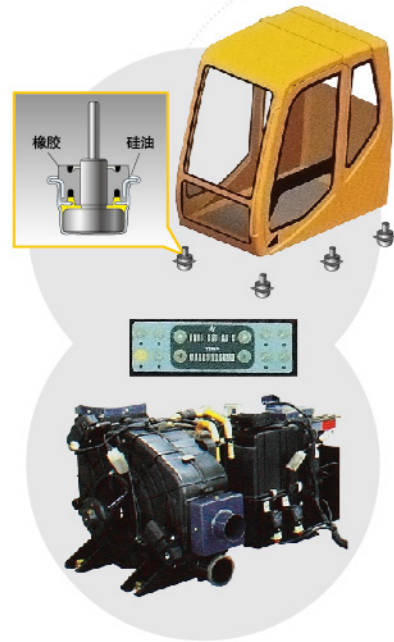


- **The increasing counterweight:** To increase the quality of weight; it has been improved compared with the same level of models, the machine has better stability.



## 驾驶室舒适、美观、视野开阔

### The Cab is Comfortable, Beautiful and Wide Vision



- 采用加强型钢作为立柱,提高整体刚性,减少振动和噪音;
- 全方位扩大视野范围,加大前窗、侧窗及后窗确保视野开阔,大幅减小盲区,操作更安全、高效;
- 加大天窗玻璃,改善向上的可视性同时增加通风性;
- 更多人性化设计,门窗采用钢化玻璃,弹性良好的安全带,防止阳光直射的遮光板;
- 所有操作控制均按人机工程理论进行设计及布置;
- 操作手柄轻松易控;
- 豪华悬浮式高靠背座椅可以进行多方位调节,并与两侧操纵箱单独或一起移动,使驾驶员轻松达到最舒适的操作姿态;
- 六点硅油橡胶减振器作支承,使振动和噪音大大降低,减少驾驶员的疲劳,提高工作效率;
- 进口原装大容量冷、暖空调,确保室内快速升温、制冷。

- The strengthen steel is used for a pillar to improve the overall rigidity, reducing vibration and noise;
- Full-scope expand horizons and enlarge the front windows, side windows and rear window to ensure the broad vision to substantially reduce the blind spots, the operation more secure, and efficient;
- To increase the glass of the day's windows to improve visibility upward and increase ventilation;
- The more humanized designs; the tempered glass is used for the windows and doors, flexible good safe belts and shading plate that prevent direct sunlight;
- All of the operations and controls are designed according to the theory of man-machine engineering;
- The operating handle is easily to control;
- The luxury floating high back seats can be multi-directional adjusted, and can be moved separately or moved together with the control boxes on both sides, so as to the driver can easily achieve the most comfortable operating posture;
- The six points' silicone rubber is used for bearing, so that greatly reduced vibration and noise, the driver's fatigue is reduced and improved work efficiency;
- The imported original large-capacity cold and warm air-conditioning, which can ensure rapid heating and cooling in the room.

## 智能化操作及显示

### Intellectual Operation and Display

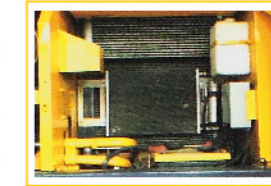


- 与国际知名公司合作开发的新型 ESS 微电脑功率控制系统,充分利用发动机功率,使机器在不同的作业状态下始终保持最佳的效率及经济性。
- 系统设置三种工作模式,根据不同的工况需求,可在 H(重载)、S(标准)、L(轻载)模式下工作。
- 自动怠速功能。
- 多功能液晶监控器超大屏幕,数字显示,全面监控发动机的工作状态(转速、水温、油位等),机器的各种运行信息随时查询。
- 功能开关集中布置在控制面板上,通过点触式按钮,轻松选择。
- 采用 GPS 卫星定位系统,远程诊断、故障预警、维修保养,自动提醒。

- The new ESS microcomputer control system developed with the international well-known companies uses fully the engine power, which can make the machine keep the best efficiency and economy in different operating state.
- The system is set with three operating modes, the system can work under the modes of H (heavy), S (standard), L (light load) mode.
- Auto-idle feature.
- The multi-function LCD monitor's large-screen, digital display can comprehensive monitors the working state of the engine (speed, water temperature, oil level, etc.), the operating information of the machine can be checked at any time.
- The function switch is focused on the control panel, through the point-touch buttons, which can be chosen easily.
- The GPS satellite positioning system is used for remote diagnosis, fault warning, and main tenance and automatic reminder.



- 集中润滑系统可使您进行方便的维修保养。
- 油水分离器、燃油滤清器、机油滤清器、先导滤油器,设置于可在地面进行检查更换的地方。
- The focused lubrication system is facilitating to repair.
- The oil-water separator, fuel filter, oil filter, pilot oil filter are set at the place easy to change on the ground.



- 散热器外部设置防护网,有效防止飞絮等杂物吸入,拆卸方便,清洗更容易。
- The safety net is set outside the radiator to effectively prevent inhalation of fly balt and other debris, convenient demolition, clean easier.



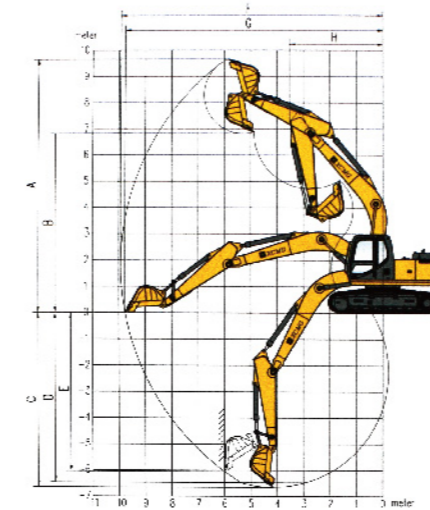
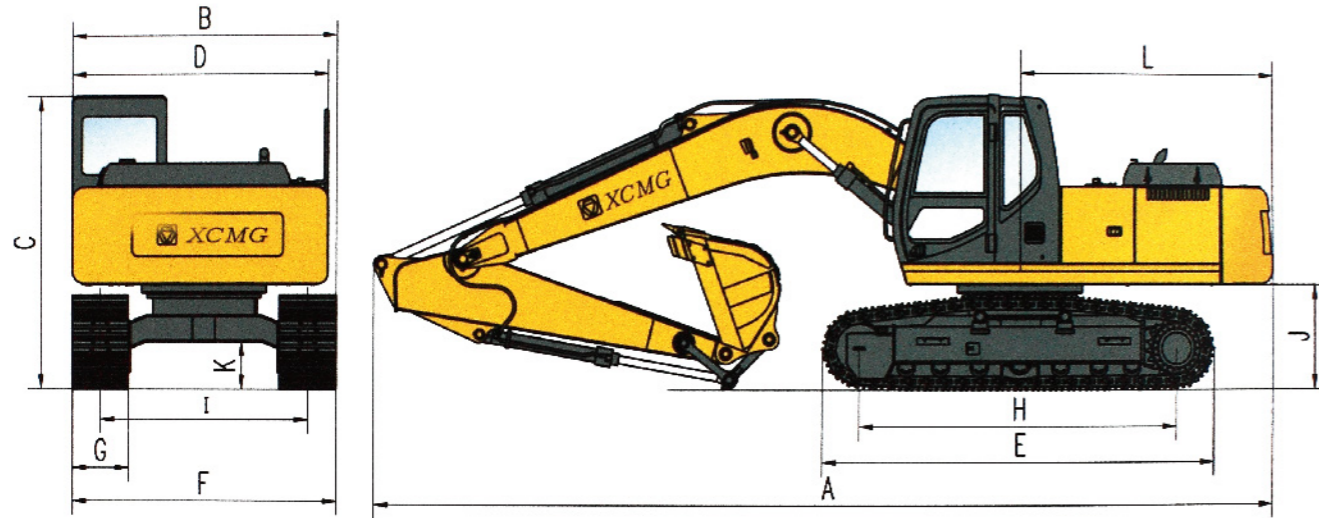
- 大容量的燃油箱,提供更长的作业时间。
- The large-capacity fuel tank can provides longer time of operating.



- 超大工具箱,更利于备用物品的贮存。
- The oversized toolbox is facilitate for the items to be stored.







**外型尺寸 Dimensions:** 单位: mm

型 号 Model	XE470C
总长 Overall length	12032
总宽 Overall width	3580
总高 Overall height	3842
上部宽度 Overall width of upperstructure	2995
履带长度 Track length	5220
底盘总宽 Overall width of undercarriage	3580
标准履带板宽度 Standard track shoe width	600
履带轴距 Track length on ground	4180
轨距 Track gauge	2392/2890
配重离地间隙 Clearance under counterweight	1360
最低离地间隙 Ground clearance	703 (不含齿高)
尾部回转半径 Tail swing radius	3665

**工作范围 Working Range** 单位: mm

型 号 Model	XE470C
A 最大挖掘高度 Max.digging height	10675
B 最大卸载高度 Max.dumping height	7409
C 最大挖掘深度 Max.digging depth	7337
D 8英尺水平面挖掘深度 Max.digging depth of cut for(8' level)	7177
E 最大垂直挖掘深度 Max.vertical wall digging depth	5225
F 最大挖掘半径 Max.digging reach	11631
G 最小回转半径 Min.swing radius	4909

**主要技术参数 Main specifications**

项 目 DESCRIPTION	单 位 UNITS	XE470C	
操作重量 Operating weight	kg	46100	
铲斗容量 Bucket capacity	m <sup>3</sup>	2.2	
发动机 Engine	型 号 Model	--	Cummins QSM11
	直 喷 Direct injection	--	√
	4 冲 程 Four strokes	--	√
	水 冷 Water cooling	--	√
	涡轮增压 Turbo charged	--	√
	空空中冷 Air to air intercooler	--	√
	缸数 No.of cylinders	--	6
	额定功率/转速 Rated power/speed	kW/r/min	250/2000
	最大扭矩/转速 Max.torque/speed	N.m	1790/1400
	排量 Displacement	L	11
主要性能 Main data	行驶速度(高低) Travel speed	km/h	5.4/3.2
	爬坡能力 Max.gradeability	°	<30
	回转速度 Swing speed	r/min	9
	接地比压 Ground pressure	kPa	82.7
	铲斗挖掘力 Bucket digging force at power max.	kN	284
液压系统 Hydraulic system	头杆挖掘力 Arm crowd force at power max.	kN	236
	主泵 Main pump	--	K5V200DTH
	主泵额定流量 Rate flow	L/min	2 × 360
	主安全阀压力 Max pressure of system	MPa	31.4/34.3
油类容量 Oil&Fuelrefilling	先导系统压力 Pilot press setting	MPa	3.9
	燃油箱容量 Fuel tank capacity	L	650
	液压油箱容量 Hydraulic tank capacity	L	360
	发动机油容量 Engine lubrication	L	38

随技术进步, 产品结构、参数将不断改进, 恕不另行通知。  
Structure and specification are subject to change without notice.