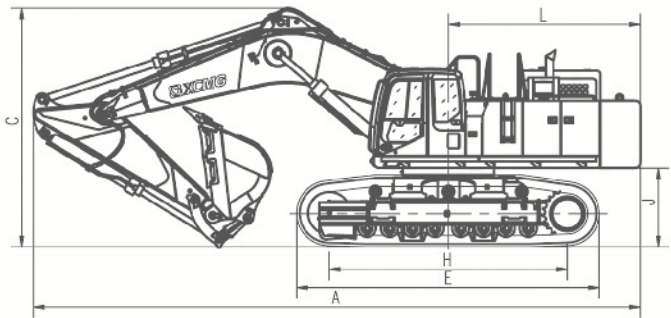
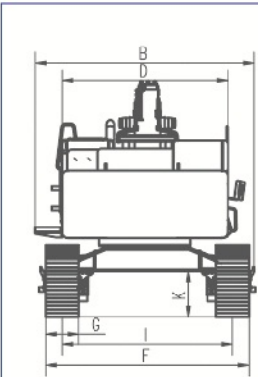
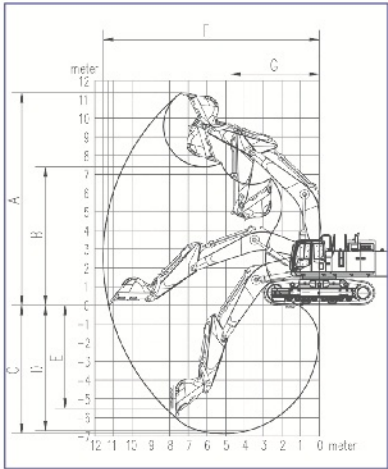


## 外形尺寸与工作范围

Appearance size and working scope



## 参数

Parameters

型号 Model	单位 Unit	参数 Parameter
操作重量 Operation weight	kg	68000
铲斗容量 Bucket capacity	m <sup>3</sup>	2.8~3.5

发动机 Engine		
发动机型号 Model	Cummins QSX15	
发动机输出功率 Output power	kw/rpm	336/1800

主要性能 Mian performance		
行走速度 Traveling speed	km/h	4.2/3.0
回转速度 Rotary speed	r/min	7
爬坡能力 Gradeability	°	35
接地比压 Ground pressure	kPa	99.1
铲斗挖掘力 Bucket digging force	kN	363
斗杆挖掘力 Arm digging force	kN	300

液压系统 Hydraulic system		
主泵 Main pump	/	2 plunger pumps
主泵额定流量 Rated flow	L/min	2×450
主安全阀压力 Main safty valve pressure	MPa	31.4/34.3

油类容量 Oil capacity		
燃油箱容积 Fuel tank capacity	L	980
液压油箱容积 Hydraulic tank capacity	L	455

型号 Model	单位 Unit	参数 Parameter
外形尺寸 Apperance size		
A 总长 Total length	mm	11940
B 总宽 Total width	mm	4280
C 总高 Total height	mm	4700
D 转台宽度 Width of platform	mm	3260
E 履带长度 Length of crawler	mm	5955
F 底盘总宽 Total width of chassis	mm	4260
G 履带宽度 Width of crawler	mm	650
H 履带轴距 Wheel base of crawler	mm	4680
I 轨距 Track gauge	mm	2800/3350
J 配重离地间隙 Ground clearance of counterweight	mm	1552
K 最低离地间隙 Min.ground clearance	mm	853
L 尾部最小回转半径 Min.rear-end swing radius	mm	3900

工作范围 Working scope		
A 最大挖掘高度 Max. digging height	mm	11350
B 最大卸载高度 Max. dumping height	mm	7370
C 最大挖掘深度 Max. digging depth	mm	6900
D 8 英尺水平挖掘深度 Max. digging depth at the range of level 8 feet	mm	6750
E 最大垂直挖掘深度 Max. vertical digging depth	mm	5500
F 最大挖掘半径 Max. digging radius	mm	11580
G 最小回转半径 Min.swing radius	mm	4750

标配 Standard configuration / 选配 Optional configuration		
斗容 Bucket capacity	m <sup>3</sup>	3.5; 2.8 / 3.1



# XE700C 液压挖掘机

Hydraulic Excavator

- 铲斗容量 Capacity of bucket (m<sup>3</sup>) : 2.8~3.5
- 操作重量 Operation weight (kg): 68000
- 额定功率 Rated power (kw/rpm): 336/1800

厚积薄发

Spur with long accumulation

超越精典

Beyond the classic



徐工集团挖掘机事业部

XCMG EXCAVATOR MACHINERY BUSINESS DEPARTMENT



## 高端配置，性能卓越

High-level configuration, remarkable performance

### 原装进口发动机

Imported engine with original packing



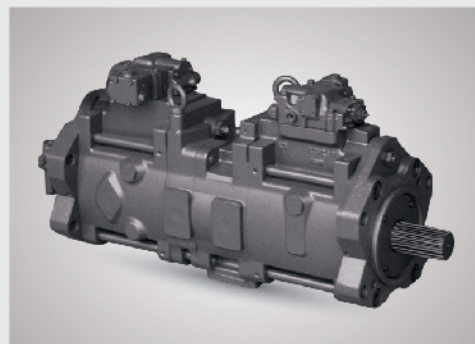
动力强劲 低油耗 更可靠

- ◆ powerful
- ◆ Low oil consumption, low noise

### 发动机 Engine

原装进口康明斯发动机，动力强劲，低噪音，低油耗，更可靠。

Imported Cummins engine has features of powerful force, low noise, low oil consumption and better reliability.



### 液压系统 Hydraulic system

原装进口的液压元件和成熟可靠的负流量控制系统，延长了整车的使用寿命，提升了作业效率；整齐美观的液压布管，提高了液压管路的使用寿命，利于维修；主泵增加消振闭端支路，提高整车的操作稳定性和舒适性。

Imported hydraulic elements and mature reliable negative control system prolong the service life of the machine and improve the working efficiency; trim arrangement of hydraulic tube improves the service life of the hydraulic pipeline, easy to maintain; damping circuit equipped on main pump improves the operating stability and comfort.

### 仪表 Instrument

原装性能优异可靠的进口电控系统，最大限度地利用发动机功率，保证机器快速、高效作业，降低损耗。

Imported electric control system has good performance and reliability which can make full use of the engine power at maximum, makes sure working efficiency and lowers the consumption.



## 高品质驾驶享受

High quality driving enjoy



### 宽敞的驾驶空间 Capacious driving space

全新驾驶室，室内空间增大，为操作者营造一个舒适的工作环境。

Fully new cab with large space provides a comfortable working environment for operator.

### 悬浮座椅 Suspension seat

基于人机工程学理念而设计的座椅，舒适感大大加强，悬浮气囊可随体重调节座椅高度，操作更舒适。

The seat designed on the basis of ergonomics concept considerably enhanced the comfortable sensation. The suspension bag can adjust the height of seat according to the weight adjustment, making the operation more comfort.

## 坚固高效，持久耐用

Sturdy, efficient and durable



### 下部行走体 Lower walking body

可靠耐用的四轮一带及张紧装置配合高性能的行走马达及减速机，使其拥有强大的行走牵引力和较小的接地比压，在恶劣的环境下作业，行走自如。

The reliable and durable 4 wheel-1 crawler, the tension device associated with the travel motor and reducer of high performance give it powerful walking traction and lower ground pressure, and operate freely under severe environment.



### 加强型铲斗 Heavy duty bucket

提高挖掘性能的加强型铲斗，其耐磨性和使用寿命均提高一倍以上。

The reinforced bucket of enhanced excavating performance improved more than double, its abrasion resistance and service life.



### 防尘机构 Dustproof structure

拥有专利技术的回转防尘机构，有效防止灰尘、油污等进入，确保机器快速作业、高效可靠。

The dustproof swing mechanism with the patent technology effectively prevents the dust and greasy dirt from entry, assures fast operation of machine and high efficiency and reliability.

## 便捷的维修保养

Convenient Maintenance

对斗杆和铲斗连接部位采用轴套接触，大幅降低了斗杆端面的磨损。

配备手持式电动黄油枪，大大提高加注效率、降低工人劳动强度。

The contact by shaft sleeve is applied for the arm and bucket connections, considerably reducing the wears on the end faces of arm. With the portable electric grease gun, the filling efficiency has been greatly improved and the labor intensity of worker reduced.



各种保养部件检查更换，触手可及，保养方便。

Various maintained components necessary for inspection and replacement are accessed within touch, making the maintenance convenient.



### 防护窗 Shielding window

驾驶室中央支柱采用高强度的封闭式结构，增加了驾驶室整体强度和刚度，提高了安全性。前方采用栅栏式前窗护网，顶部采用 FOPS 护罩以防止落物造成伤害。

The center pole in cab applied the high-strength closed structure, increased the overall strength and rigidity of cab and improved the safety. On the front, the fence-like front window net is used and on the top the FOPS shield to prevent the damage by the falling objects.



### 管路 Pipeline

采用更大直径的油缸、硬管、胶管等管路，增大液压油流量，使挖掘力更强大。

The pipeline as applied, like the cylinder, rigid tube and rubber hose etc., in larger diameter, increases the hydraulic oil flow, making the digging force more powerful.

## 选配部分

Optional match part

可根据用户的需求，配置其他作业装置，如：长动臂、长斗杆、多种挖斗、松土器等。

Other working devices can be allocated according to the customer's needs, e.g. the long boom, long arm, various buckets and ridgers etc.,